

CORNER RECORD

Agency Index

BK 151 PG 50

Document Number CR 16428

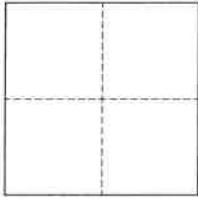
City of Oakland

County of Alameda, California

Brief Legal Description Monument 26NE11 near Intersection of Oakport Street and Hassler Way

CORNER TYPE

COORDINATES (Optional)



- ☐ Government Corner ☒ Control
☐ Meander ☐ Property
☐ Rancho ☐ Other

Date of Survey December 20, 2022

N. _____ E. _____

Elevation _____

Units ☐ Metric ☐ U.S. Survey Foot

Horizontal Datum _____

Zone _____ Epoch Date _____

Vertical Datum _____

☐ Complies with Public Resources Code §§8801-8819☐ Complies with Public Resources Code §§8890-8902PLS Act Ref.: ☐ 8765(d) ☒ 8771 ☐ 8773 ☐ Other:

Corner/
Monument: ☒ Left as found ☐ Established ☐ Rebuilt ☒ Pre-Construction
☐ Found and tagged ☐ Reestablished ☒ Referenced ☐ Post-Construction

Narrative of corner identified and monument as found, set, reset, replaced, or removed:

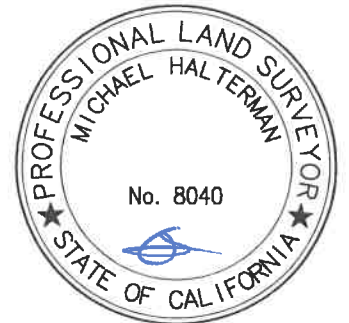
☒ See sheet #2 for description(s):

This Corner Record is being filed to reference the position of an existing monument, prior to a street rehabilitation project. This document is for preservation purposes only, and no attempt was made to determine the relationship to property, centerline, or right-of-way lines.

SURVEYOR'S STATEMENT

This Corner Record was prepared by me or under my direction in conformance with

the Professional Land Surveyors' Act on February 3, 2023

Signed [Signature] P.L.S. or R.C.E. No. 8040

COUNTY SURVEYOR'S STATEMENT

This Corner Record was received

FEB 14 2023

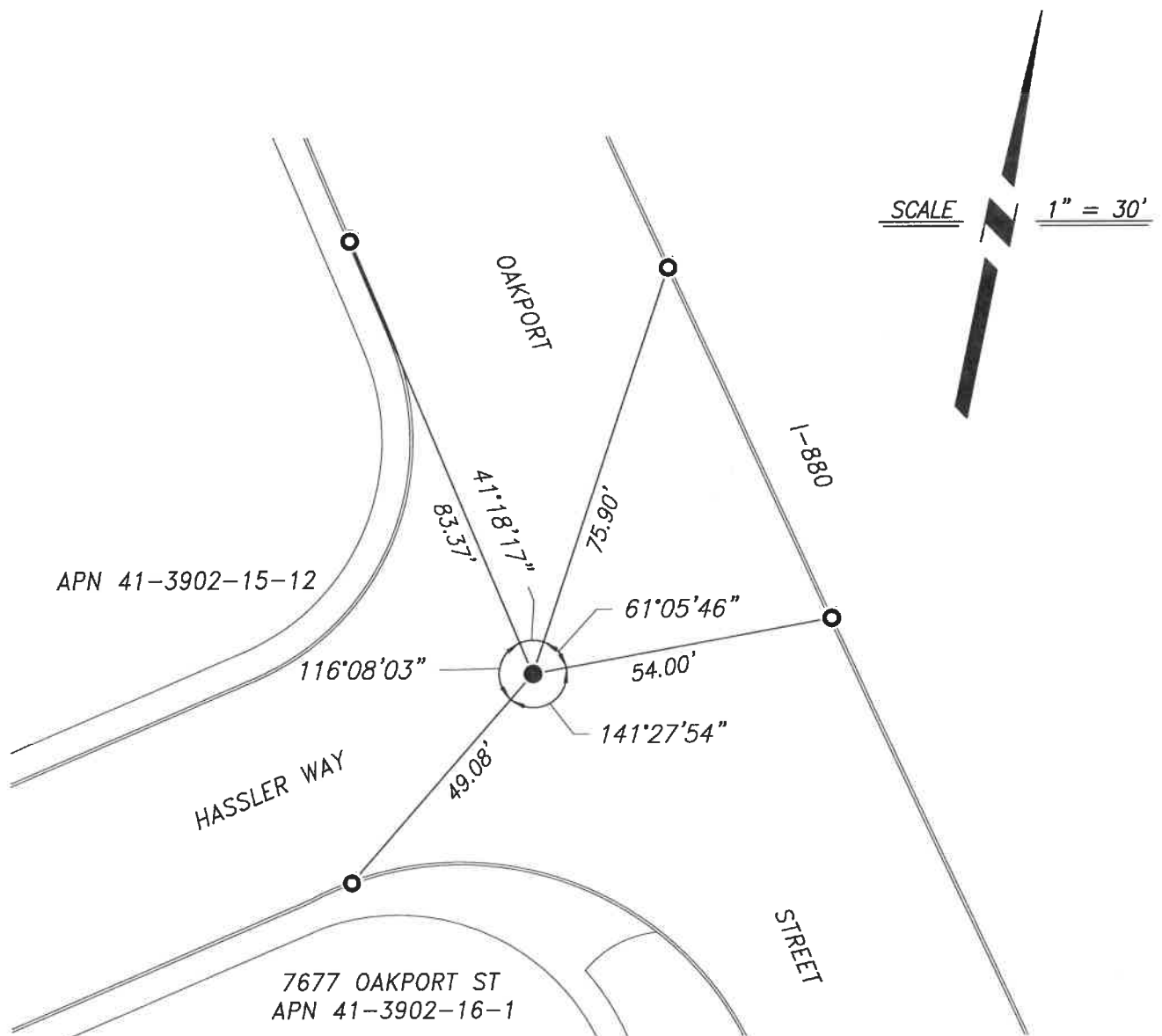
and examined and filed

Signed [Signature] P.L.S. or R.C.E. No. 7010

Title ALAMEDA COUNTY SURVEYOR

County Surveyor's Comment





REFERENCE

- (A) CITY OF OAKLAND MONUMENT MAP 1506B458, NO. 63, ALAMEDA COUNTY RECORDS.
- (B) CORNER RECORD 5161 IN THE CITY OF OAKLAND, FILED ON FEBRUARY 25, 2013, ALAMEDA COUNTY RECORDS.
- (C) PARCEL MAP 6003 IN THE CITY OF OAKLAND, FILED ON JUNE 2, 1993, IN BOOK 205 OF PARCEL MAPS AT PAGES 94-98, ALAMEDA COUNTY RECORDS.

LEGEND

- FOUND MONUMENT, 2-1/2" BRASS DISK, WITH PUNCH, FLUSH WITH SIDEWALK, CITY OF OAKLAND SURVEY STATION, RCE 18650
- CUT CROSS ON CONCRETE SIDEWALK AS REFERENCE POINT

NOTES

1. ALL REFERENCES ARE ALAMEDA COUNTY RECORDS
2. FOUND MONUMENT 26NE11 PER (A)