

County Surveyors Office
Stanislaus County Cal

Swamp and Overflowed Lands

Survey No 154

Township 3 South

Range 13 East

Section 24 all between the United
States Meander line and the left
bank of the Tuolumne River in
the South $\frac{1}{2}$ of the South $\frac{1}{2}$ of
Section 24

Base and Meridian of Mount Diablo

Containing 3.89 Acres,
Surveyed March 21st 1861

for Charles Ackerman

Field Notes

Beginning at Meander Post on line between Sections 24 & 25 thence
Run on the U. S. Meander line $N 46^{\circ} E$ 13.17 chs, $N 28^{\circ} E$ 7.50 chs to the left
bank of the Tuolumne River Meander downstream Run
 $S 46^{\circ} W$ 23.00 chs, to the line between Sections 24 & 25 Run on
Section line East 3.72 chs to the place of beginning

Run by the True Meridian Magnetic Variation $15^{\circ} 30'$ East

Surveyed in accordance with the Act of the Legislature concerning
Swamp and Overflowed Lands approved April 18th 1859
and the instructions of the Surveyor General

Silas Wilcox

County Surveyor Stanislaus County

Approved April 2nd 1861

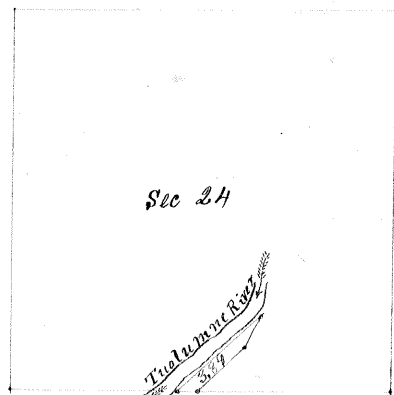
M. A. Wigley

Surveyor General

Recorded May 24th 1861

Silas Wilcox

County Surveyor



Scale $\frac{1}{2}$ Mile to 1 Inch