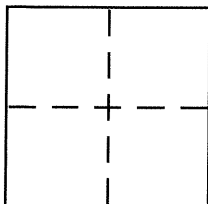


# CORNER RECORD

Document Number CR 4368  
County of ALAMEDA, California

City of BERKELEY

Brief Legal Description CITY MONUMENT B0120



## CORNER TYPE

Government Corner ☐ Control ☒  
Meander ☐ Property ☐  
Rancho ☐ Other ☐  
Date of Survey 5-3-2010

## COORDINATES (Optional)

N. \_\_\_\_\_  
E. \_\_\_\_\_  
Zone \_\_\_\_\_ NAD27 ☐ NAD83 ☐  
NAD83 Epoch \_\_\_\_\_  
Elev. \_\_\_\_\_  
Vert. Datum: NGVD29 ☐ NAVD88 ☐  
Meas. Units: Metric ☐ Imperial ☐

Corner - Left as found ☒ Found and tagged ☐ Established ☐ Reestablished ☐ Rebuilt ☐

Identification and type of corner found: Evidence used to identify or procedure used to establish or reestablish the corner:

FOUND CITY MONUMENT

In compliance with Section 8771 of the Professional Land Surveyors' Act, this corner record is being filed to ESTABLISH the position of an existing monument PRIOR to street or highway construction.

A description of the physical condition of the monument as found and as set or reset:

SET CROSS

## SURVEYOR'S STATEMENT

This Corner Record was prepared by me or under my direction in conformance with the Land Surveyor's Act on MAY 7, 2010

Signed Robert J. Brunel P.L.S. or R.C.E. No. 4961

## COUNTY SURVEYOR'S STATEMENT

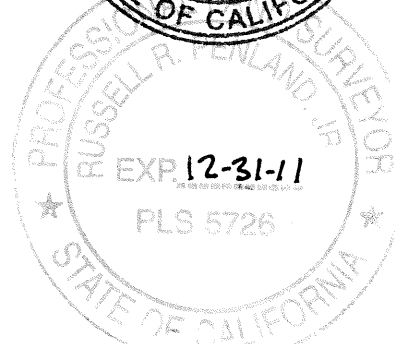
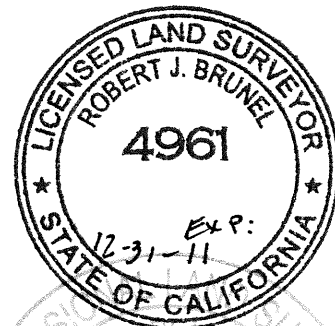
This Corner Record was received 12-10-11

and examined and filed 1-10-11

Signed Russell R. Penland P.L.S. or R.C.E. No. 5726

Title COUNTY SURVEYOR

County Surveyor's Comment \_\_\_\_\_



DG 43R1

NEWBURY ST.

FOUND 1/8" BRASS PIN MONUMENT  
IN CONCRETE INSIDE STANDARD CASTING  
AT ASHBY AVENUE AND NEWBURY STREET  
#B0120 ELEVATION=134.18

ELEVATION=134.85

ELEVATION=133.26

ASHBY AVENUE  
(80' WIDE)

WHEELER ST.

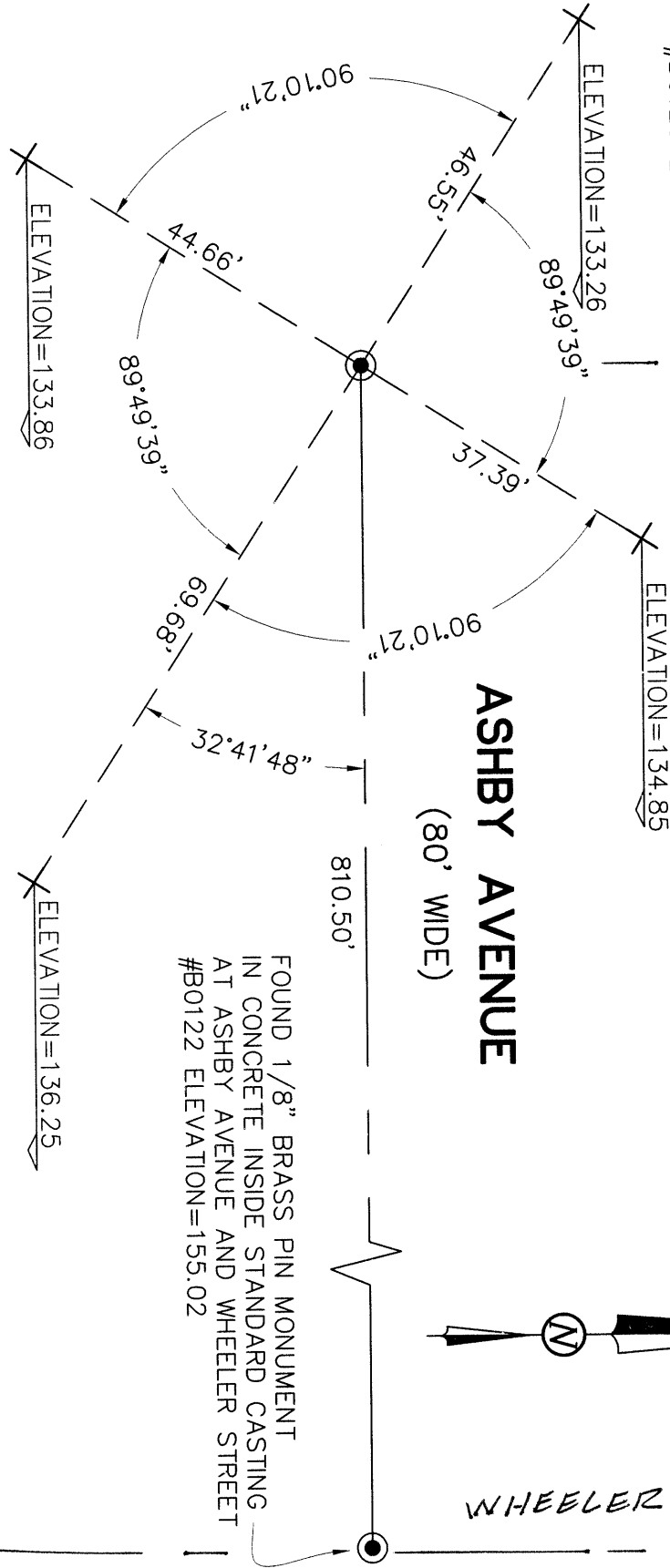


810.50'

FOUND 1/8" BRASS PIN MONUMENT  
IN CONCRETE INSIDE STANDARD CASTING  
AT ASHBY AVENUE AND WHEELER STREET  
#B0122 ELEVATION=155.02

ELEVATION=136.25

ELEVATION=133.86



**LEGEND**

○ FOUND CITY MONUMENT AS NOTED

+ SET CROSS

**CORNER RECORD**

TO REFERENCE THE MONUMENT  
AT ASHBY AVENUE AND NEWBURY STREET  
CITY OF BERKELEY, COUNTY OF ALAMEDA, CALIFORNIA

MAY 3, 2010

SCALE: 1"=20'

F.B. NO. 1290

7792 COB ASHBY MONS.DWG

JOB NO. 10-7792