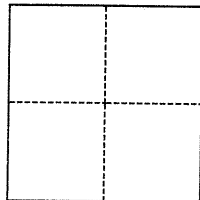


CORNER RECORD

Agency Index BK 121 PG 63Document Number CR-12744City of SAN LEANDRO County of ALAMEDA, CaliforniaBrief Legal Description City Monument at the intersection of Calgary and Vining; TR 1924, 39M5

CORNER TYPE



- ☐ Government Corner ☒ Control
☐ Meander ☐ Property
☐ Rancho ☐ Other

Date of Survey September 20, 2018

COORDINATES (Optional)

N. _____ E. _____

Elevation _____

Units ☐ Metric ☐ U.S. Survey Foot

Horizontal Datum _____

Zone _____ Epoch Date _____

Vertical Datum _____

☐ Complies with Public Resources Code §§8801-8819☐ Complies with Public Resources Code §§8890-8902PLS Act Ref.: ☐ 8765(d) ☒ 8771 ☐ 8773 ☐ Other:

Corner/
Monument: ☒ Left as found ☐ Established ☐ Rebuilt ☒ Pre-Construction
☐ Found and tagged ☐ Reestablished ☒ Referenced ☐ Post-Construction

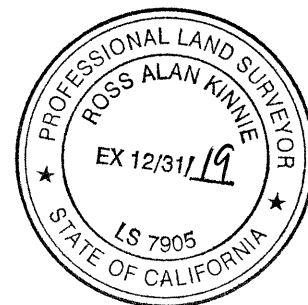
Narrative of corner identified and monument as found, set, reset, replaced, or removed:

☒ See sheet #2 for description(s):

Referenced City Monument at the intersection of Calgary Street and Vining Drive as shown on Tract Map 1924, Book 39 Page 5, as shown on page 2.

SURVEYOR'S STATEMENT

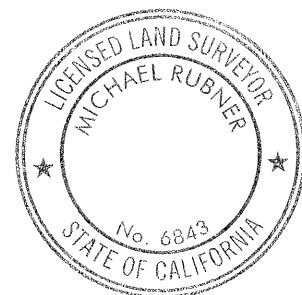
This Corner Record was prepared by me or under my direction in conformance with

the Professional Land Surveyors' Act on May 9, 2019Signed [Signature] P.L.S. or P.C.E. No. 7905

COUNTY SURVEYOR'S STATEMENT

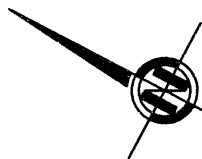
This Corner Record was received 13 FEBRUARY 2019and examined and filed 10 JULY 2019Signed Michael Rubner P.L.S. or P.C.E. No. 6843Title COUNTY SURVEYOR

County Surveyor's Comment



BASIS OF BEARING:

N 62°28'34" E IS TAKEN BETWEEN
THE MONUMENT AT VINING DRIVE AND
CRANBROOK STREET, AND THE MONUMENT
A VINING DRIVE AND ELKO COURT.

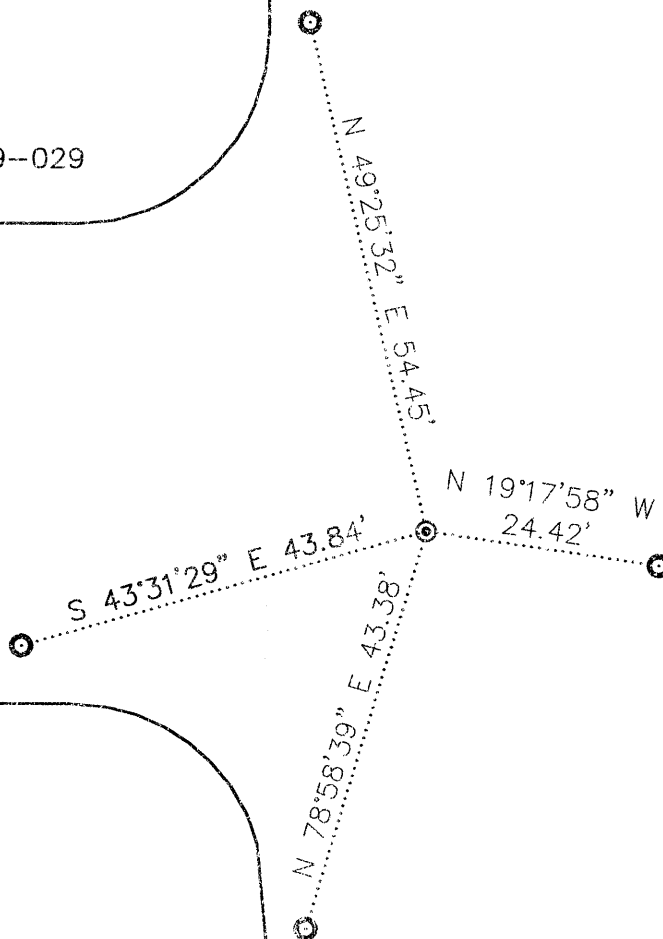


SCALE 1"=20'

APN: 80G-1099-029

CALGARY
STREET

VINING DRIVE

LEGEND:

FOUND STANDARD CITY
MONUMENT ⊙
SET STAINLESS STEEL
TAG L.S. 7905 ⊙

REFERENCE:

TRACT 1924 BOOK 39 PAGE 5

ALS JOB 2018-036