

# CORNER RECORD

Agency Index

BK 15A PG 4

Document Number CR 16474

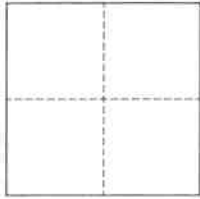
City of Oakland

County of Alameda, California

Brief Legal Description Monument near 6109 Ridgemont Drive

## CORNER TYPE

## COORDINATES (Optional)



- ☐ Government Corner ☒ Control  
☐ Meander ☐ Property  
☐ Rancho ☐ Other

Date of Survey January 20, 2023

N. \_\_\_\_\_ E. \_\_\_\_\_

Elevation \_\_\_\_\_

Units ☐ Metric ☐ U.S. Survey Foot

Horizontal Datum \_\_\_\_\_

Zone \_\_\_\_\_ Epoch Date \_\_\_\_\_

Vertical Datum \_\_\_\_\_

☐ Complies with Public Resources Code §§8801-8819☐ Complies with Public Resources Code §§8890-8902PLS Act Ref.: ☐ 8765(d) ☒ 8771 ☐ 8773 ☐ Other:

Corner/  
Monument: ☒ Left as found ☐ Established ☐ Rebuilt ☒ Pre-Construction  
☐ Found and tagged ☐ Reestablished ☒ Referenced ☐ Post-Construction

Narrative of corner identified and monument as found, set, reset, replaced, or removed:

☒ See sheet #2 for description(s):

This Corner Record is being filed to reference the position of an existing monument, prior to a sanitary sewer rehabilitation project.  
This document is for preservation purposes only, and no attempt was made to determine the relationship to property, centerline, or right-of-way lines.

## SURVEYOR'S STATEMENT

This Corner Record was prepared by me or under my direction in conformance with

the Professional Land Surveyors' Act on March 9, 2023

Signed  P.L.S. or R.C.E. No. 8040

## COUNTY SURVEYOR'S STATEMENT

This Corner Record was received \_\_\_\_\_

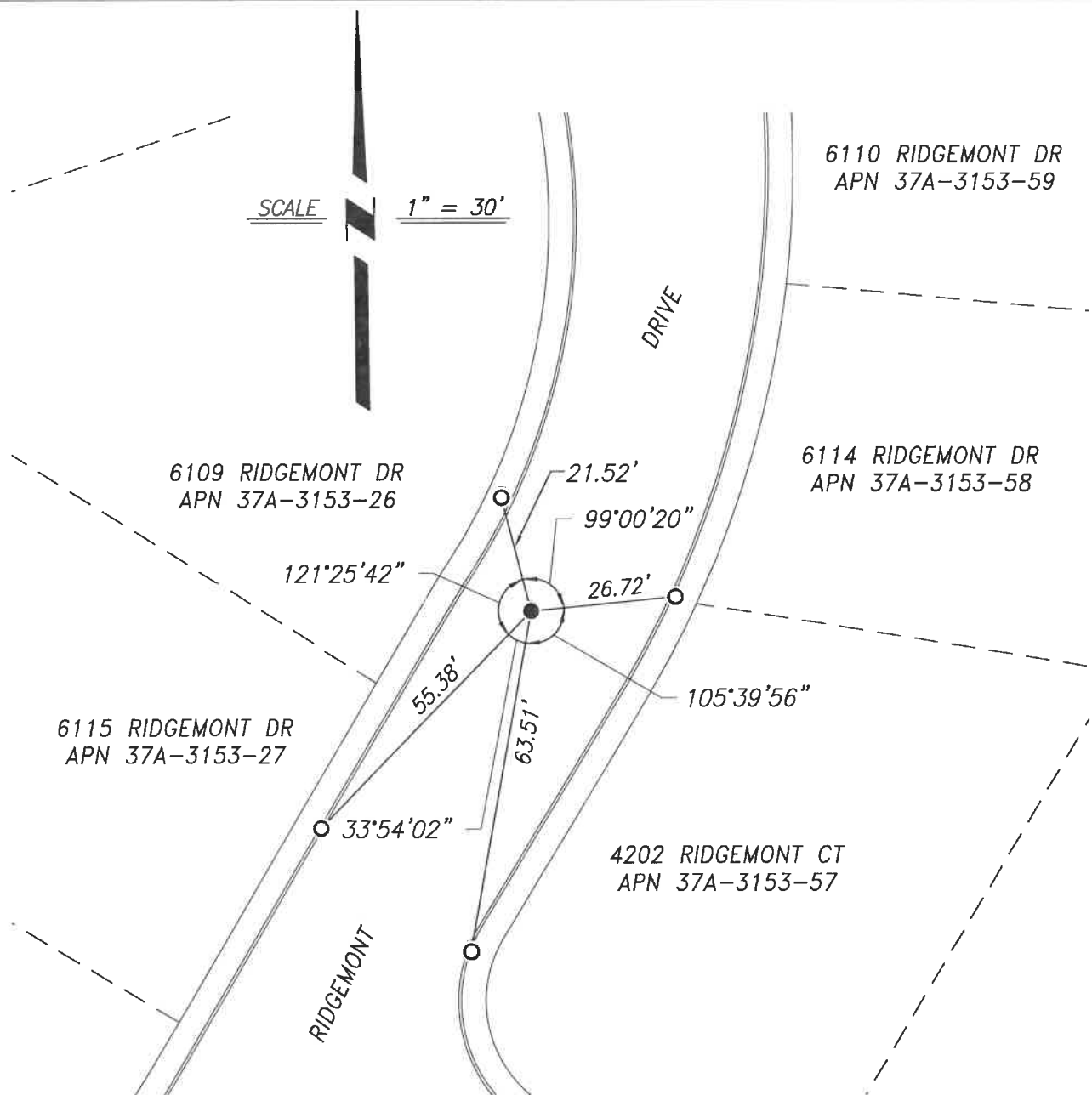
and examined and filed MAR 30 2023

Signed  P.L.S. or R.C.E. No. 7010

Title ALAMEDA COUNTY SURVEYOR

County Surveyor's Comment





## REFERENCE

(A) TRACT 3393 IN THE CITY OF OAKLAND, FILED ON OCTOBER 29, 1981, IN BOOK 130 OF TRACT MAPS, AT PAGES 33-52, ALAMEDA COUNTY RECORDS.

## LEGEND

- FOUND MONUMENT, 2-1/2" BRASS DISK, WITH PUNCH, STAMPED "RE 9788"
- CUT CROSS IN CONCRETE AS REFERENCE POINT

## NOTES

1. ALL REFERENCES ARE ALAMEDA COUNTY RECORDS