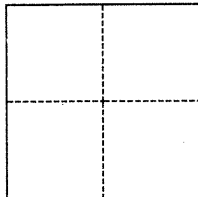


CORNER RECORD

Agency Index

BK 121 PG 53Document Number CR-12747City of SAN LEANDRO County of ALAMEDA, CaliforniaBrief Legal Description City Monument at the intersection of Elko and Vining; TR 1667, 36M78**CORNER TYPE****COORDINATES (Optional)**

- ☐ Government Corner ☒ Control
☐ Meander ☐ Property
☐ Rancho ☐ Other

Date of Survey September 20, 2018

N. _____ E. _____

Elevation _____

Units ☐ Metric ☐ U.S. Survey Foot

Horizontal Datum _____

Zone _____ Epoch Date _____

Vertical Datum _____

☐ Complies with Public Resources Code §§8801-8819☐ Complies with Public Resources Code §§8890-8902

PLS Act Ref.:

☐ 8765(d)☒ 8771☐ 8773☐ Other:Corner/
Monument:☒ Left as found☐ Established☐ Rebuilt☒ Pre-Construction☐ Found and tagged☐ Reestablished☒ Referenced☐ Post-Construction

Narrative of corner identified and monument as found, set, reset, replaced, or removed:

☒ See sheet #2 for description(s):

Referenced City Monument at the intersection of Elko Court and Vining Drive as shown on Tract Map 1667, Book 36 Page 8, as shown on page 2.

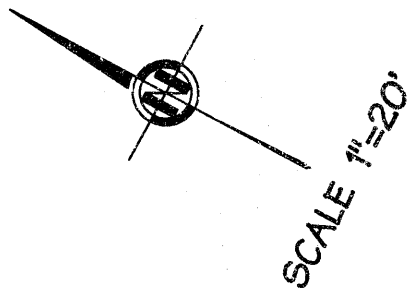
SURVEYOR'S STATEMENT

This Corner Record was prepared by me or under my direction in conformance with

the Professional Land Surveyors' Act on May 9, 2019Signed [Signature] P.L.S. or R.C.E. No. 7905**COUNTY SURVEYOR'S STATEMENT**This Corner Record was received 13 FEBRUARY 2019and examined and filed 10 JULY 2019Signed Michael Rubner P.L.S. or R.C.E. No. 6843Title COUNTY SURVEYOR

County Surveyor's Comment



BASIS OF BEARING:

N 62°28'34" E IS TAKEN BETWEEN
THE MONUMENT AT VINING DRIVE AND
CRANBROOK STREET, AND THE MONUMENT
A VINING DRIVE AND ELKO COURT.

APN: 80G-1103-034

ELKO
COURT

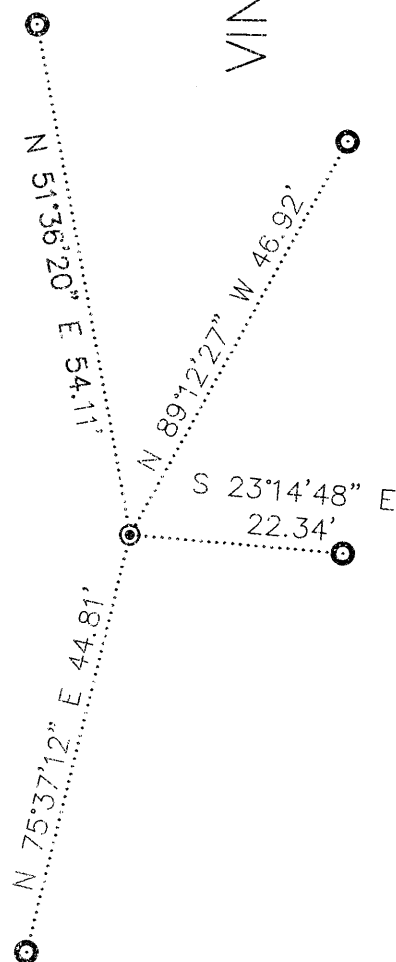
LEGEND:

FOUND STANDARD CITY
MONUMENT
SET STAINLESS STEEL
TAG L.S. 7905



ALS JOB 2018-036

VINING DRIVE

REFERENCE:

TRACT 1667 BOOK 36 PAGE 78