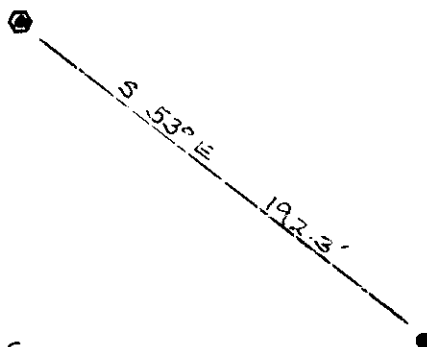


THE MONUMENT SET ON
10/27/1976 BY L. YTORRASPE, L.S.
FROM EVIDENCE OF SCRIBED
STAKE AND MOUND OF
STONES. PER CALTRANS
CORNER RECORDS.
SEARCHED FOR REMAINS
OF STAKE - NOT FD.
ACCEPTED AS A TRUE
AND FAITHFUL PERPETUATION
OF THE ORIGINAL MONUMENT.



FD. 13" D.B.H. PINON PINE
W/PARTIALLY HEALED SCAR
FACING NE^{1/4}, NO VISIBLE
SCRIBING. NO TRACE OF
"BT" SCAR AT BASE. 1950
U.S.F.S. "K" TAG. PER
CALTRANS CORNER RECORDS
SET TAG LS 7002.

1879 G.L.O. RECORD
DOES NOT CALL FOR
A BT AT THIS
CORNER.