

ASSESSMENT DIAGRAM, SIERRA VALLEY TRACT NO. 2
MAMMOTH LAKES, COUNTY OF MONO, CALIFORNIA.

FILED IN THE OFFICE OF THE CLERK OF THE BOARD OF SUPERVISORS THIS 3rd
DAY OF September, 1969.

Ann M. Noble
CLERK OF THE BOARD OF SUPERVISORS

RECORDED IN THE OFFICE OF THE COUNTY SURVEYOR THIS 3rd DAY OF Sept.
ember, 1969.

William H. Jennings
Donald Under
COUNTY SURVEYOR, COUNTY OF MONO

THE ASSESSMENTS SHOWN ON THIS DIAGRAM WERE FIRST ENTERED BY THE
BOARD OF SUPERVISORS ON THE 2nd DAY OF September, 1969, AND
SAID ASSESSMENT DIAGRAM WAS RECORDED IN THE OFFICE OF THE COUNTY SURVEYOR
OF SAID COUNTY ON THE 3rd DAY OF September, 1969. REFERENCE
IS MADE TO SAID RECORDED ASSESSMENT ROLL FOR THE EXACT AMOUNT OF EACH
ASSESSMENT LISTED AGAINST EACH PARCEL OF LAND SHOWN ON THIS ASSESSMENT
DIAGRAM.

Ann M. Noble
CLERK OF THE BOARD OF SUPERVISORS

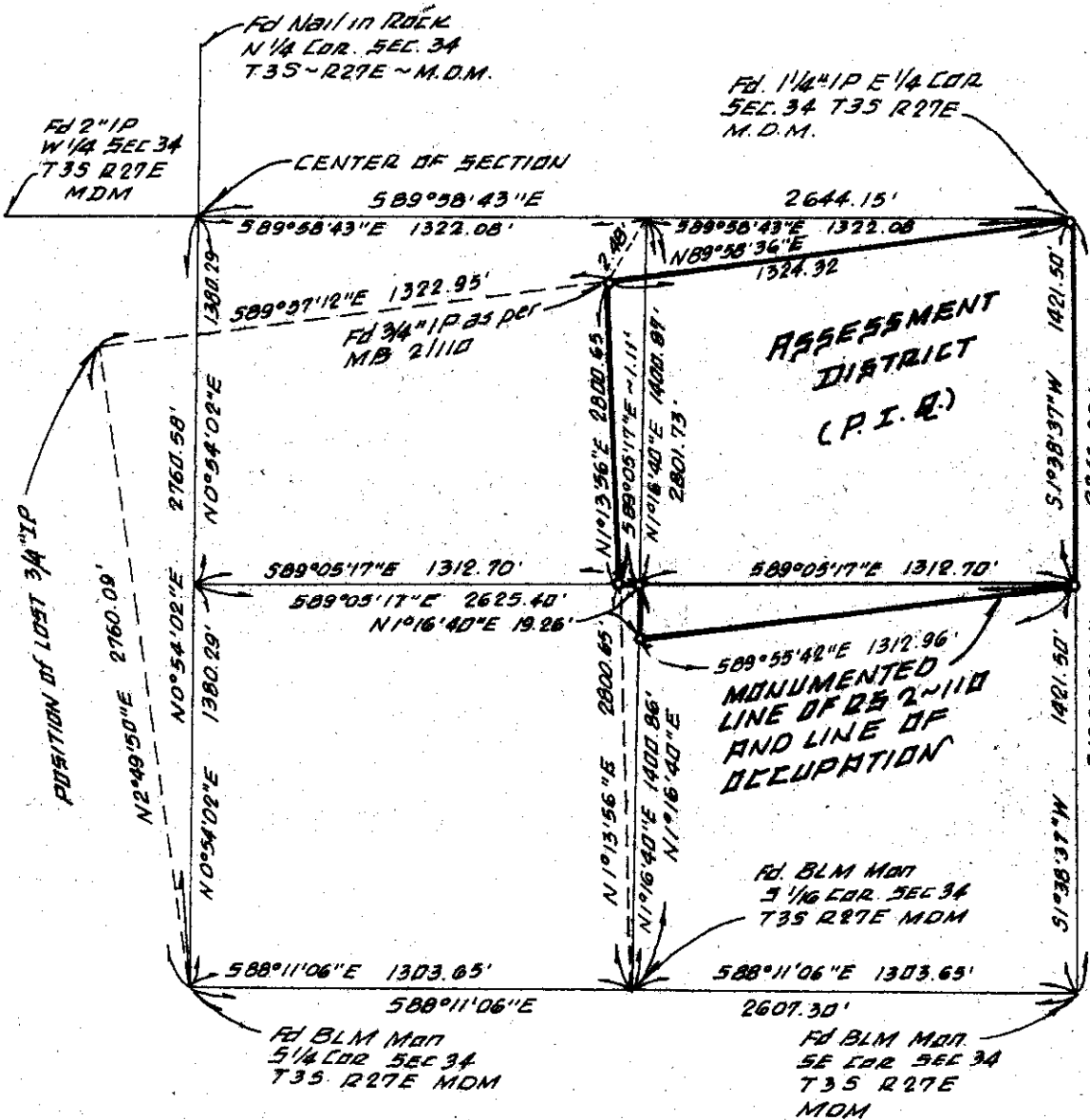
No. - 378

RECORDED THIS 3rd DAY OF September, 1969, AT THE HOUR
OF 3:30 O'CLOCK P. M. IN BOOK 1 - Pages 2-28 OF MAPS OF ASSESS-
MENT DISTRICTS IN THE OFFICE OF THE COUNTY RECORDER IN THE COUNTY
OF MONO, STATE OF CALIFORNIA.

Ann M. Noble
COUNTY RECORDER OF COUNTY OF MONO

FINAL ASSESSMENT
SIERRA VALLEY TRACT NO. 2 ASSESSMENT DISTRICT

PARCEL & ASSESSMENT #	ASSESSMENT COST	Owner	PARCEL & ASSESSMENT #	ASSESSMENT COST	Owner
1	7,106.00	Unknown	47	2,196.00	Unknown
2	6,344.00	"	48	2,245.00	"
3	16,290.00	"	49	2,185.00	"
4	16,446.00	"	50	3,271.00	"
5	3,646.00	"	51	3,720.00	"
6	5,185.00	"	52	3,133.00	"
7	5,156.00	"	53	3,072.00	"
8	5,400.00	"	54	3,132.00	"
9	2,586.00	"	55	3,132.00	"
10	2,586.00	"	56	3,436.00	"
11	2,586.00	"	57	3,436.00	"
12	2,586.00	"	58	2,489.00	"
13	3,082.00	"	59	2,489.00	"
14	1,842.00	"	60	13,984.00	"
15	1,842.00	"	61	2,933.00	"
16	1,842.00	"	62	2,933.00	"
17	3,363.00	"	63	4,745.00	"
18	3,363.00	"	64	2,931.00	"
19	3,363.00	"	65	3,007.00	"
20	2,246.00	"	66	3,007.00	"
21	2,246.00	"	67	3,007.00	"
22	3,850.00	"	68	3,007.00	"
23	3,880.00	"	69	3,007.00	"
24	3,849.00	"	70	3,007.00	"
25	2,810.00	"	71	3,072.00	"
26	2,810.00	"	72	5,598.00	"
27	2,810.00	"	73	1,654.00	"
28	2,773.00	"	74	3,114.00	"
29	2,773.00	"	75	2,931.00	"
30	2,887.00	"	76	5,776.00	"
31	2,887.00	"	77	2,924.00	"
32	2,887.00	"	78	2,924.00	"
33	2,887.00	"	79	4,744.00	"
34	6,062.00	"	80	2,931.00	"
35	6,061.00	"	81	2,933.00	"
36	5,163.00	"	82	14,003.00	"
37	26,470.00	"	83	8,172.00	"
38	4,673.00	"	84	3,911.00	"
39	3,437.00	"	85	3,911.00	"
40	3,437.00	"	86	11,173.00	"
41	3,133.00	"	87	2,903.00	"
42	3,133.00	"	88	2,903.00	"
43	3,024.00	"	89	2,903.00	"
44	3,084.00	"	90	2,903.00	"
45	2,252.00	"	91	5,804.00	"
46	2,232.00	"	92	3,055.00	"
TOTAL				392,716.00	



SURVEY DETAIL
(NOT TO SCALE)