

CITY OF GREENSBORO TRACER WIRE NOTE:

NOTE CONCERNING SANITARY SEWER LATERALS. 306.2.4 TRACER WIRE. FOR PLASTIC SEWER PIPING, AN INSULATED COPPER TRACER WIRE OR OTHER APPROVED CONDUCTOR SHALL BE INSTALLED ADJACENT TO AND OVER THE FULL LENGTH OF PIPING. ACCESS SHALL BE PROVIDED TO THE TRACER WIRE OR THE TRACER WIRE SHALL TERMINATE AT THE CLEANOUT BETWEEN THE BUILDING DRAIN AND BUILDING SEWER. THE TRACER WIRE SIZE SHALL BE NOT LESS THAN 14 AWG AND THE INSULATION TYPE SHALL BE LISTED FOR DIRECT BURIAL.

- NOTES:
1. ALL PLUMBING PERMITS REQUIRED THROUGH GUILFORD COUNTY
 2. CONSTRUCTION INSPECTION REQUIRED, CALL (336) 373-2377
 3. TO SCHEDULE AN INSPECTOR, FOR 6", 12" WATER LINES AND 4" SANITARY SEWER & CONNECTION TO EXISTING MAIN.

CITY OF GREENSBORO NOTE:

ENCROACHMENT PERMIT REQUIRED THROUGH NCDOT FOR WATER LINE INSTALLATION. CALL (336) 487-0100 FOR PERMIT.

CITY OF GREENSBORO NOTES:

- NOTES: (IF ALREADY COMPLETE DISREGARD)
1. ALL CONSTRUCTION TO C.O.G. / NCDOT STANDARDS
 2. ALL ON SITE PRIVATE WATER / SEWER TO BE MAINTAINED BY OWNER.
 3. TERMINATE EXISTING, UNUSED WATER/SEWER TO THE MAIN TO C.O.G. STANDARDS
 4. CLEANOUTS IN LOAD BEARING AREAS TO BE PER GSO-224. PROVIDE DETAIL.
 5. METER, BACKFLOW PREVENTER & ENCLOSURES TO C.O.G. STD.
 6. ALL STANDARD NCDOT/C.O.G. REQUIRED UTILITY SEPARATIONS MUST BE PROVIDED.
 7. SERVICES THAT TIE INTO MANHOLES MUST DO SO AT THE SHELF UNLESS MANHOLE IS GREATER THAN 10" THEN USE A RELINER INSIDE DROP.
 8. METERS CANNOT BE SET UNTIL EASEMENTS ARE RECORDED AND PROVIDED TO WATER RESOURCES.
 9. THERE IS OR IS NOT A FIRE PUMP ASSOCIATED WITH THIS PROJECT.
 10. METERS CANNOT BE LOCATED IN LOAD BEARING AREAS.
 11. MULTIPLE USERS CAN REQUIRE TANDEN BACKFLOW PREVENTERS
 12. TAPS ON WATER/SEWER LINES 16" OR LARGER MUST BE PERFORMED BY WATER RESOURCES PERSONNEL.

PLUMBING PERMIT NOTICE:

PLUMBING INSPECTION REQUIRED ON 6" & 1-1/2" WATER SERVICE AND ON 4" SEWER SERVICE. CALL DEVELOPMENT SERVICES AT (336) 373-2155 FOR PERMIT.

CONSTRUCTION INSPECTION:

CONSTRUCTION INSPECTION REQUIRED ON 6" & 1-1/2" WATER LINE AND ON 4" SANITARY SEWER. CALL (336) 373-2377 TO SCHEDULE INSPECTOR.

APPROXIMATE LOCATION OF FIRE HYDRANT WEST OF THE PROJECT:
LATITUDE: 36° 03' 47.52" N
LONGITUDE: 79° 36' 31.07" W

APPROXIMATE LOCATION OF 12" DIP WATER LINE

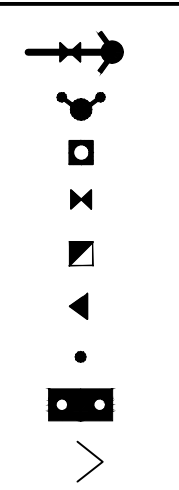
541.71'
SEPARATION BOTH EXISTING FIRE HYDRANTS (EX. FH #1 & WEST)

BURLINGTON ROAD
(80' PUBLIC R/W)

1084.65'
SEPARATION BETWEEN EX. FH EAST & EX. FH WEST

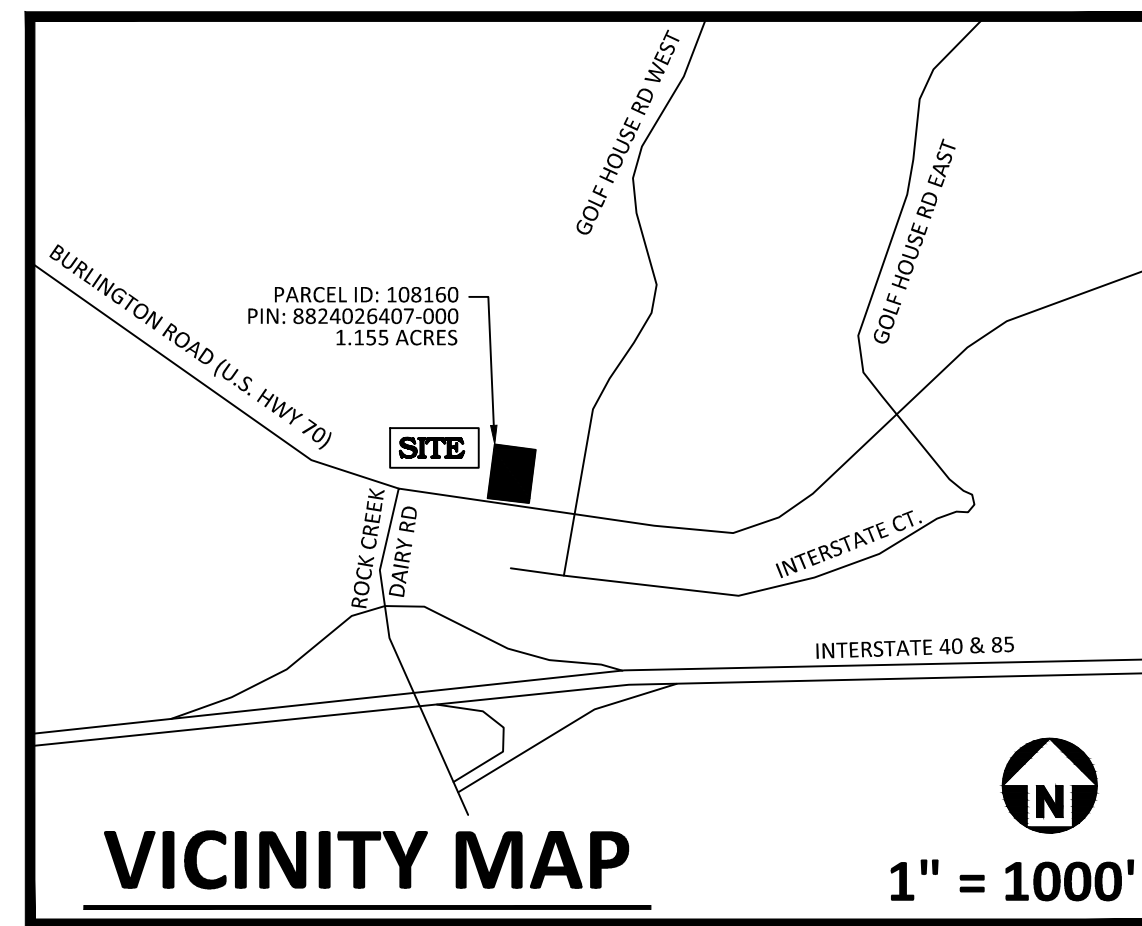
I:\Projects\CGBauchalter\GB-20050404-Production\Engineering\Construction Drawings\GB20050404-SITE.dwg, 8/10/2021, 11:00:28 AM, Micallef, Lauren

UTILITY LEGEND



FIRE HYDRANT ASSEMBLY
FIRE DEPARTMENT CONNECTION (FDC)
WATER METER
WATER VALVE
METER & VAULT
REDUCER
SEWER CLEAN-OUT
GREASE TRAP
SEWER FLOW DIRECTION
ARROW

LINE BREAK SYMBOL
WATERLINE
WATER SERVICE LINE
UTILITY SLEEVE
SANITARY SEWER
SEWER SERVICE LINE
SEWER FORCE MAIN
GAS LINE
OVERHEAD UTILITY
UNDERGROUND ELECTRIC
TELEPHONE
EASEMENT LINE



CITY OF GREENSBORO PUBLIC UTILITIES
STANDARD UTILITY NOTES (AS APPLICABLE):

1. ALL MATERIALS & CONSTRUCTION METHODS SHALL BE IN ACCORDANCE WITH CITY OF GREENSBORO DESIGN STANDARDS, DETAILS & SPECIFICATIONS AS WELL AS GUILFORD COUNTY UTILITY STANDARDS.

ADDITIONAL UTILITY NOTES:

1. ALL WATER MAINS, SERVICES AND FIRE SERVICES GREATER THAN 2" DIAMETER ARE TO BE DUCTILE IRON PIPE. 2" & SMALLER DOMESTIC SERVICES MUST BE CTS (WITHOUT FITTINGS) TO THE WATER METER.
2. ALL SEWER MAINS SHALL BE EITHER PVC OR DUCTILE IRON PIPE AS SHOWN ON THE PLANS. ALL PIPE MATERIAL SHALL MEET CITY OF GREENSBORO STANDARDS AND SPECIFICATIONS AS DEFINED IN THE LATEST ISSUE OF THE PUBLIC UTILITIES HANDBOOK AND/OR UNIFIED DEVELOPMENT ORDINANCE (UDO).
3. ALL FIRE HYDRANTS ALONG PUBLIC R/W LINES SHALL HAVE A 5'X5'S L CITY OF GREENSBORO WATERLINE EASEMENT ONTO ADJACENT PROPERTY.
4. ALL SANITARY SEWER INTERCEPTOR LINES (12" AND LARGER), AS WELL AS MANHOLES AND FITTINGS ASSOCIATED WITH THE INTERCEPTOR LINE, SHALL BE INTERNALLY LINED WITH PROTECTO 401 OR APPROVED EQUAL TO PREVENT HYDROGEN SULFIDE CORROSION. SEE THE CURRENT CITY OF GREENSBORO PUBLIC UTILITIES DEPARTMENT HANDBOOK FOR APPROVED COATINGS AND APPLICATION METHODS.
5. ALL UNDERGROUND UTILITIES INSTALLED SHALL BE ELECTRONICALLY LOCATABLE. CONTRACTOR SHALL COORDINATE DIRECTLY WITH THE CITY OF GREENSBORO PUBLIC UTILITIES DEPARTMENT FOR DETAILS AND SPECIFICATIONS FOR MEETING THESE REQUIREMENTS.
6. EXISTING UTILITIES SHOWN ARE BASED ON FIELD SURVEYS AND THE BEST AVAILABLE RECORD DRAWINGS. THE CONTRACTOR SHALL VERIFY CONDITIONS PRIOR TO BEGINNING CONSTRUCTION. ANY DISCREPANCIES BETWEEN ACTUAL FIELD CONDITIONS AND THE PLANS SHALL BE REPORTED TO THE ENGINEER IMMEDIATELY.
7. ALL WATER AND SEWER MAINS WITHIN PUBLIC EASEMENTS OR RIGHTS-OF-WAY TO BE OWNED, OPERATED, AND MAINTAINED BY THE CITY OF GREENSBORO.
8. ALL WATER AND SEWER MAINS NOT WITHIN PUBLIC EASEMENTS OR RIGHTS-OF-WAY TO BE PRIVATELY OWNED, OPERATED, AND MAINTAINED BY THE PROPERTY OWNER.
9. CONTRACTOR SHALL NOTIFY "NC811" (811) OR (1-800-632-4949) AT LEAST 3 FULL BUSINESS DAYS PRIOR TO BEGINNING CONSTRUCTION OR EXCAVATION TO HAVE EXISTING UTILITIES LOCATED. CONTRACTOR SHALL CONTACT ANY LOCAL UTILITIES THAT PROVIDE THEIR OWN LOCATOR SERVICES INDEPENDENT OF "NC811". REPORT ANY DISCREPANCIES TO THE ENGINEER IMMEDIATELY.
10. ALL UTILITY SLEEVES SHALL BE SCHEDULE 40 PVC AND INSTALLED WITH 2' MINIMUM COVER. BOTH ENDS SHALL BE CAPPED AND MARKED.
11. GREENSBORO STANDARD SPECIFICATION FOR PVC SEWER PIPE:
"PVC SEWER PIPE SHALL MEET THE REQUIREMENTS OF ASTM D3034, TYPE PSM, WITH A MAXIMUM SDR OF 21. PIPE JOINTS SHALL BE ELASTOMERIC GASKET, PUSH-ON TYPE, IN ACCORDANCE WITH ASTM D3212. POLYVINYL COMPOUNDS SHALL COMPLY WITH A MINIMUM CELL CLASSIFICATION OF 124548 AS DEFINED IN ASTM SPECIFICATION D1784. SOLID WALL PVC PIPE SHALL NOT BE USED FOR SEWERS LARGER THAN 15 INCHES IN DIAMETER."

GREASE INTERCEPTOR CALCULATIONS

Reviewed by: Andy

Reference No. 27445

Project Name: Coffee Shop* - Whitsett, NC (91060-001)

Step 1: Flow rate to grease interceptor

Fixture flow rate: (cu in / 231) = gal x 0.75 / 2 min = 2 min flow rate

NAME	TYPE	DIMENSIONS	QTY	CU IN	FLOW RATE
3 Comp Work (13700)	3 Compartment Sink	16" x 19" x 14" (3)	1	12,768	20.73 GPM
Advansys (15186)	Undercounter (Dishwasher)	N/A	1	1,155	2.5 GPM
Countertop Rinser (19277)	Bar Sink One Bowl	26" x 9" x 12"	2	5,616	9.12 GPM
Drain Tray (17650)	Floor Sink	N/A	1	N/A	N/A
Floor Drain	Floor Drain	N/A	3	N/A	N/A
Hand Sink (14688)	Bar Sink One Bowl	10" x 14" x 5"	1	700	1.14 GPM
Hand Sink Drop-in (4)	Bar Sink One Bowl	10" x 6" x 5"	1	300	0.49 GPM
Ice Machine (10294)	Floor Sink	N/A	1	N/A	N/A
Mop Sink (10995)	Mop Basin	24" x 24" x 10"	1	5,760	9.35 GPM
Rinse Drop-In (10549)	Bar Sink One Bowl	12" x 20" x 14"	1	3,360	5.45 GPM
Rinse w/Drainboard (17565)	Bar Sink One Bowl	15" x 27" x 14"	1	5,670	9.2 GPM
Water Filling Station (18743)	Floor Sink	N/A	1	N/A	N/A

Total 57.98 GPM

Step 2: Grease Production

Servings per day x Grease production value x Days between pump-outs = Grease output

Number of meals served per day: 1000

Grease production value: 0.005 lbs per serving (Coffee Shop: Low / No flatware)

Days between pump-outs: 90 days

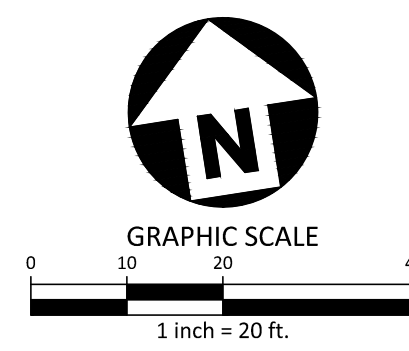
1000 x 0.005 x 90 = 450 lbs of FOG

SCHIER MODEL	Description: Polyethylene Grease Interceptor
GB-75	Dimensions: Length: 45.5", Width: 33", Height: 40" Flow Rates/Grease Capacities: 75 GPM / 861.8 lbs Liquid Capacity: 125 gal

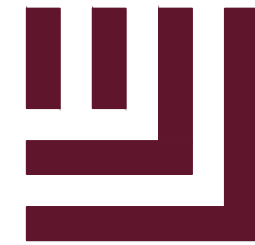


Know what's below.
Call before you dig.

ALL CONSTRUCTION SHALL BE IN ACCORDANCE WITH THE CURRENT GUILFORD COUNTY ENGINEERING DESIGN AND CONSTRUCTION STANDARDS



PRELIMINARY DRAWING - NOT RELEASED FOR CONSTRUCTION



McAdams

The John R. McAdams Company, Inc.
2905 Meridian Parkway
Durham, NC 27713

phone 919. 361. 5000
fax 919. 361. 2269
license number: C-0293, C-187

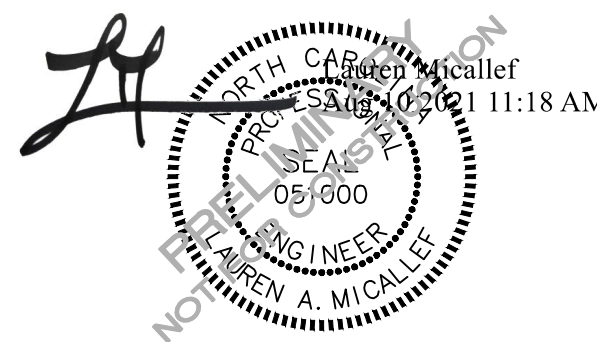
www.mcadamsco.com

CLIENT

CAPITAL GROWTH BUCHALTER
361 SUMMIT BLVD, STE 100
BIRMINGHAM, ALABAMA
PHONE: 205.263.4589



STARBUCKS - BURLINGTON RD
MINOR SITE PLAN SUBMITTAL
6405 BURLINGTON ROAD
WHITSETT, NORTH CAROLINA 27377



REVISIONS

NO.	DATE	REVISION
1	08.10.2021	REVISED PER STARBUCKS & COUNTY COMMENTS
2	-	-
3	-	-
4	-	-
5	-	-
6	-	-

PLAN INFORMATION

PROJECT NO. CGB-20050
FILENAME CGB20050X-SITE
CHECKED BY LAW
DRAWN BY LAM
SCALE 1" = 20'
DATE 03.25.2021

SHEET

UTILITY PLAN

C4.00