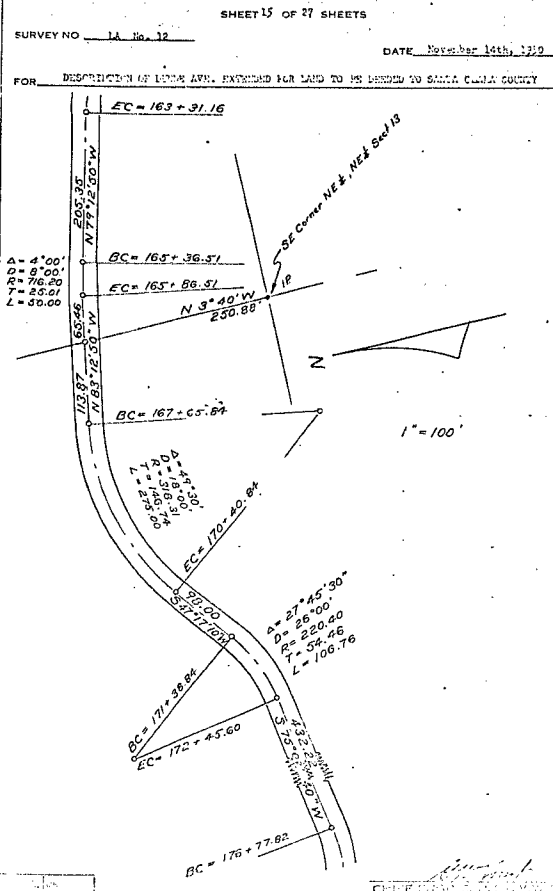
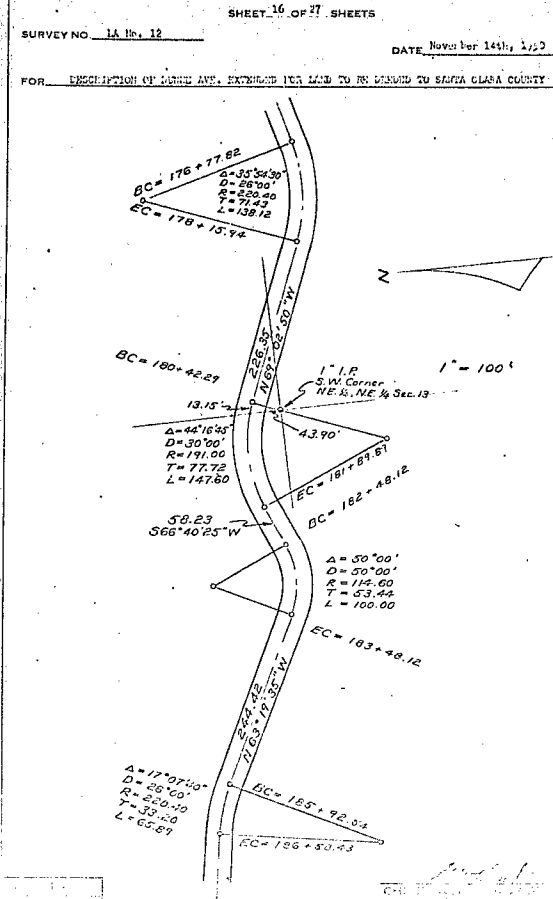


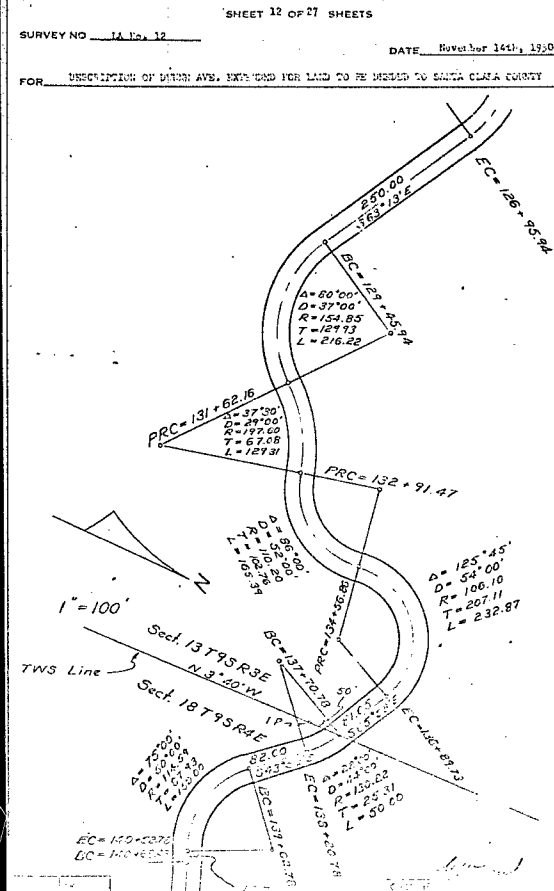
SANTA CLARA VALLEY WATER CONSERVATION DISTRICT
SANTA CLARA COUNTY, CALIFORNIA
RIGHT OF WAY PLAT



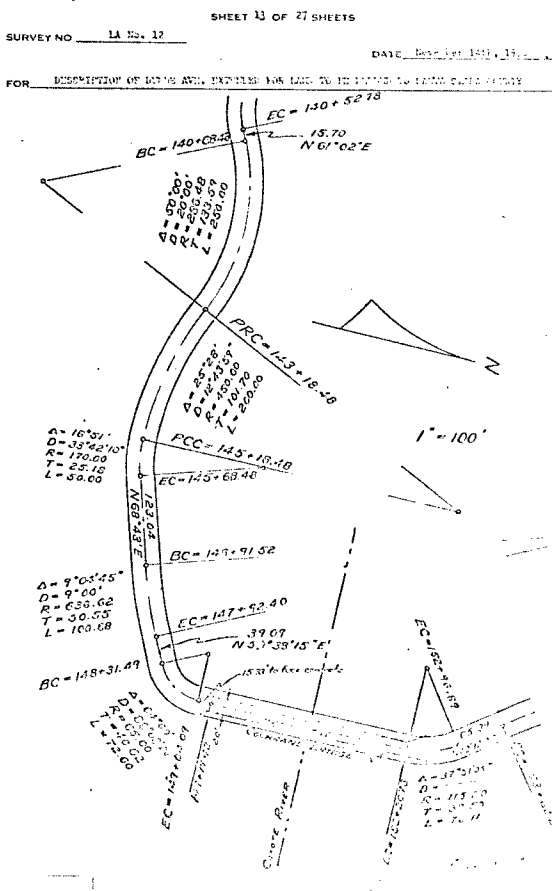
SANTA CLARA VALLEY WATER CONSERVATION DISTRICT
SANTA CLARA COUNTY, CALIFORNIA
RIGHT OF WAY PLAT



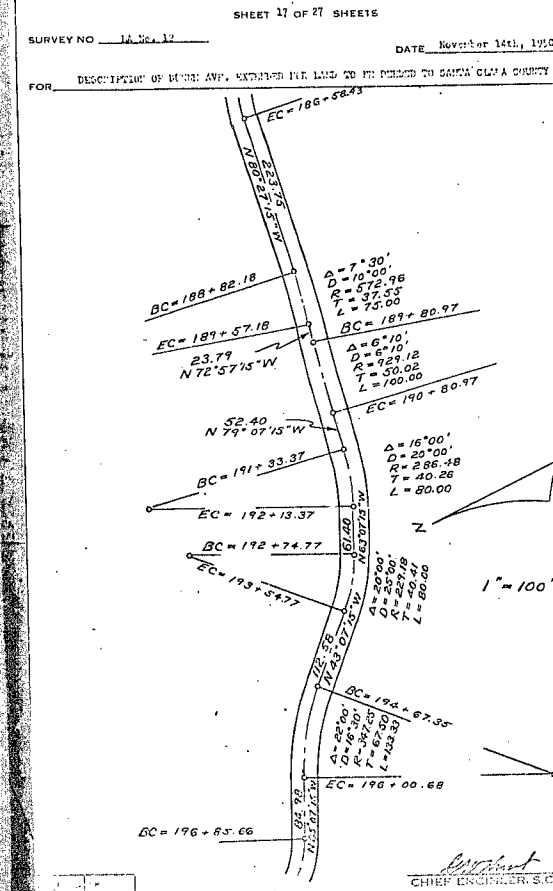
SANTA CLARA VALLEY WATER CONSERVATION DISTRICT
SANTA CLARA COUNTY, CALIFORNIA
RIGHT OF WAY PLAT



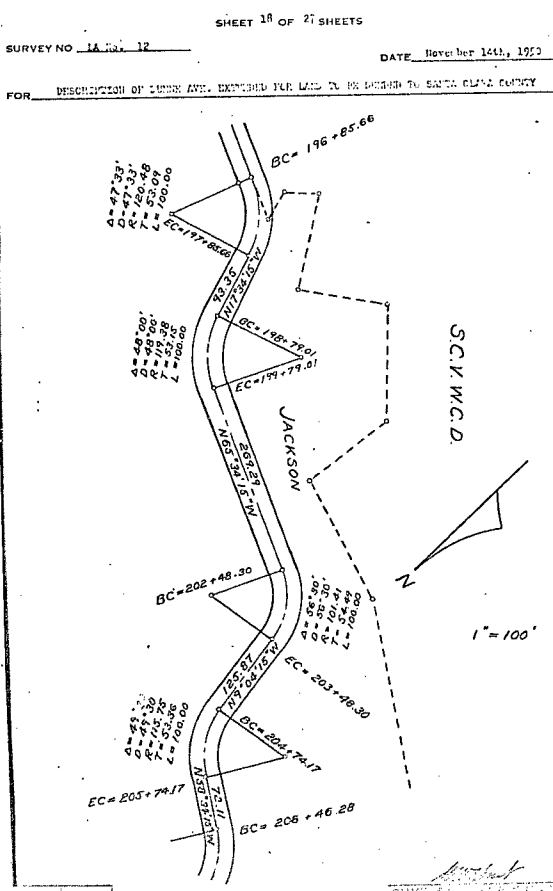
SANTA CLARA VALLEY WATER CONSERVATION DISTRICT
SANTA CLARA COUNTY, CALIFORNIA
RIGHT OF WAY PLAT



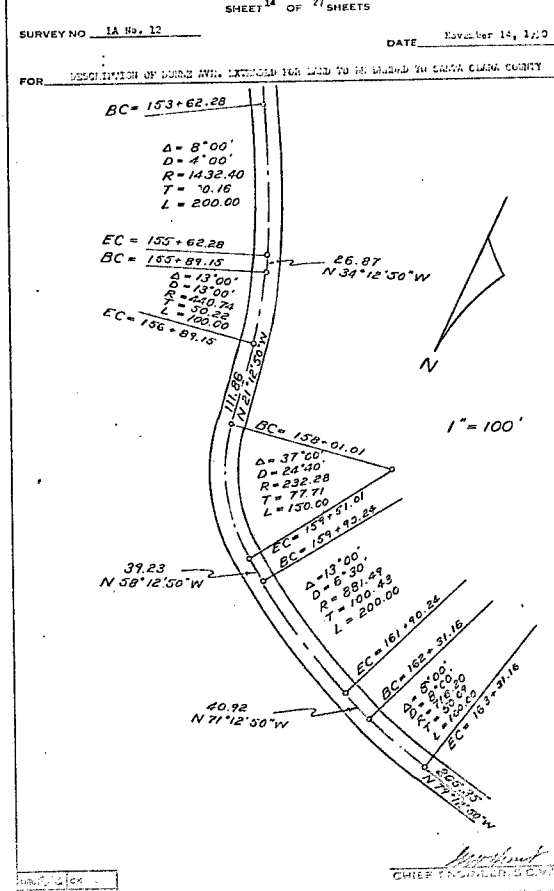
SANTA CLARA VALLEY WATER CONSERVATION DISTRICT
SANTA CLARA COUNTY, CALIFORNIA
RIGHT OF WAY PLAT



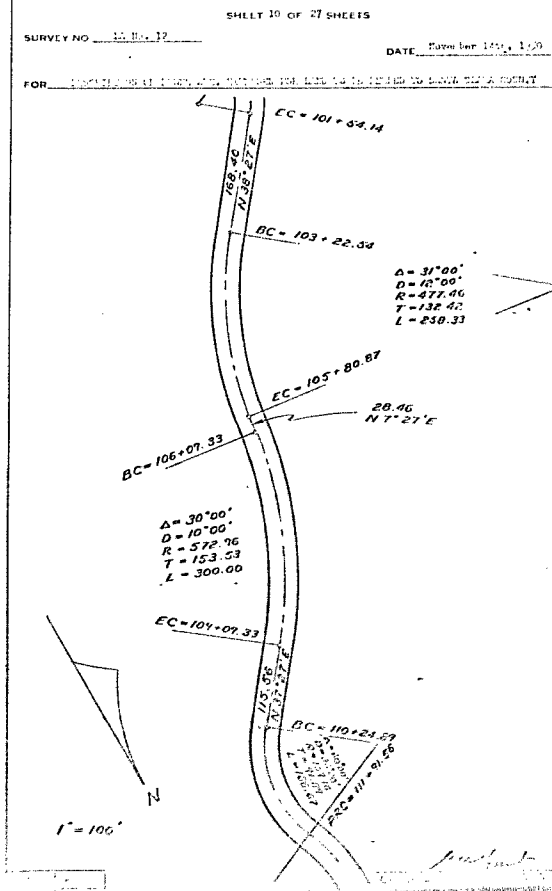
SANTA CLARA VALLEY WATER CONSERVATION DISTRICT
SANTA CLARA COUNTY, CALIFORNIA
RIGHT OF WAY PLAT



SANTA CLARA VALLEY WATER CONSERVATION DISTRICT
SANTA CLARA COUNTY, CALIFORNIA
RIGHT OF WAY PLAT



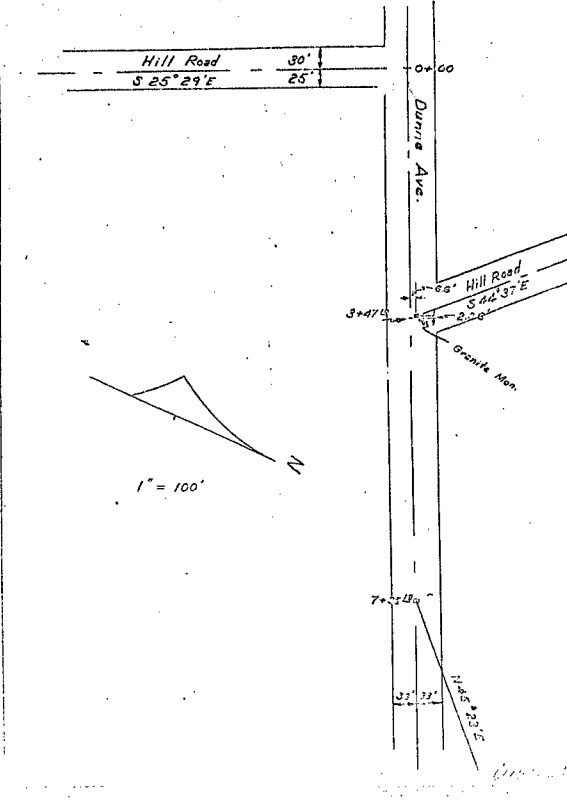
SANTA CLARA VALLEY WATER CONSERVATION DISTRICT
SANTA CLARA COUNTY, CALIFORNIA
RIGHT OF WAY PLAT



1660

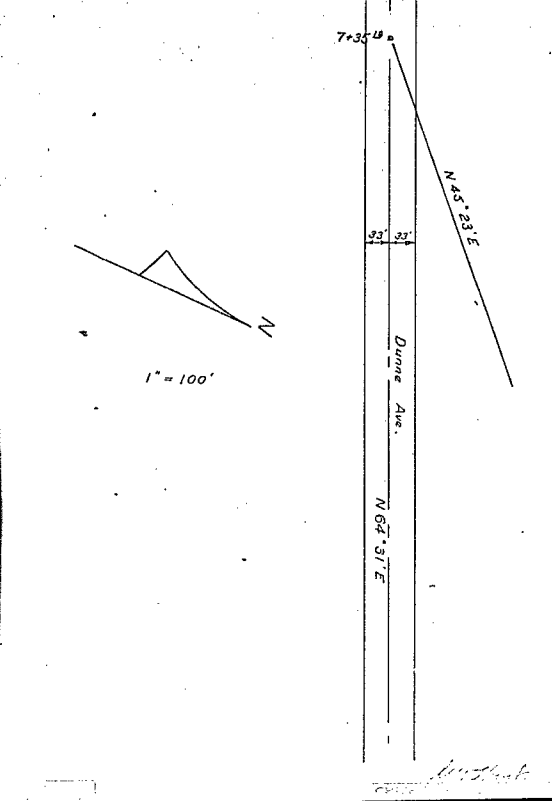
SANTA CLARA VALLEY WATER CONSERVATION DISTRICT
SANTA CLARA COUNTY, CALIFORNIA
RIGHT OF WAY PLAT

SHEET 1 OF 27 SHEETS
SURVEY NO. 1A No. 12 DATE November 14th, 1950
FOR DESCRIPTION OF DUNE AVE. EXTENDED FOR LAND TO BE DEEDED TO SANTA CLARA COUNTY



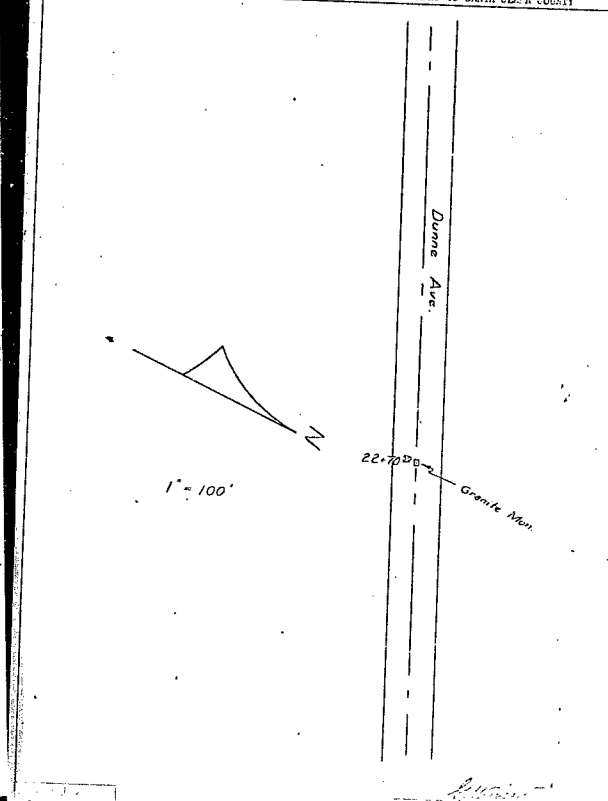
SANTA CLARA VALLEY WATER CONSERVATION DISTRICT
SANTA CLARA COUNTY, CALIFORNIA
RIGHT OF WAY PLAT

SHEET 2 OF 27 SHEETS
SURVEY NO. 1A No. 12 DATE November 14th, 1950
FOR DESCRIPTION OF DUNE AVE. EXTENDED FOR LAND TO BE DEEDED TO SANTA CLARA COUNTY



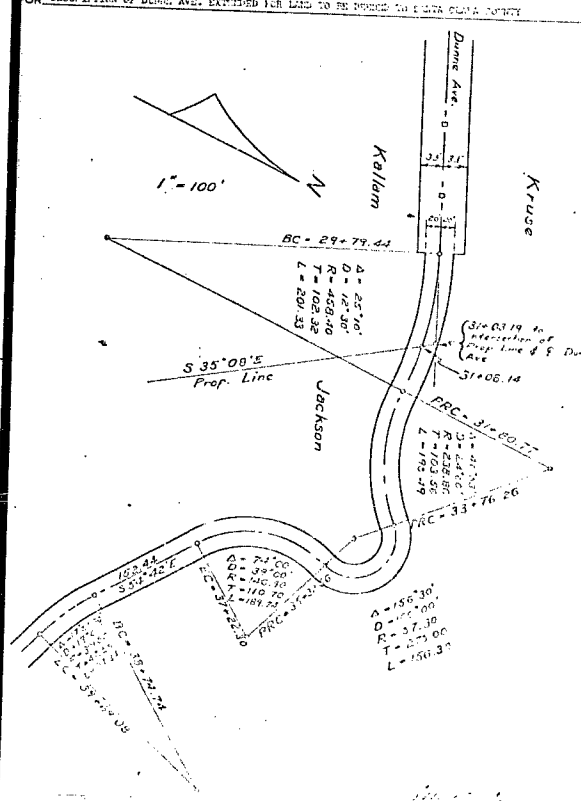
SANTA CLARA VALLEY WATER CONSERVATION DISTRICT
SANTA CLARA COUNTY, CALIFORNIA
RIGHT OF WAY PLAT

SHEET 3 OF 27 SHEETS
SURVEY NO. 1A No. 12 DATE November 14th, 1950
FOR DESCRIPTION OF DUNE AVE. EXTENDED FOR LAND TO BE DEEDED TO SANTA CLARA COUNTY



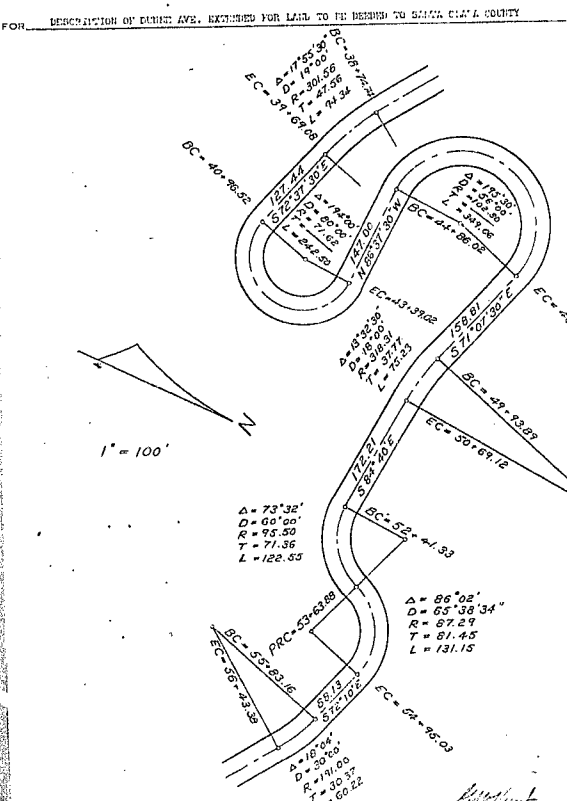
SANTA CLARA VALLEY WATER CONSERVATION DISTRICT
SANTA CLARA COUNTY, CALIFORNIA
RIGHT OF WAY PLAT

SHEET 4 OF 27 SHEETS
SURVEY NO. 1A No. 12 DATE November 14th, 1950
FOR DESCRIPTION OF DUNE AVE. EXTENDED FOR LAND TO BE DEEDED TO SANTA CLARA COUNTY



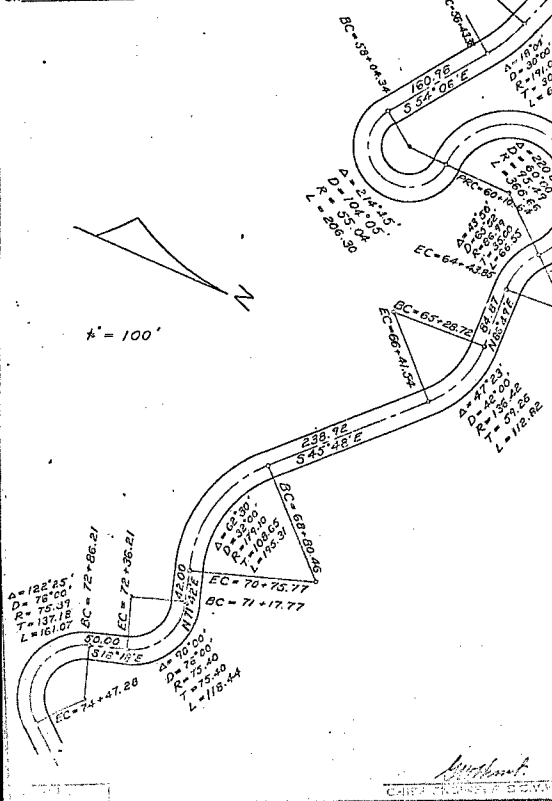
SANTA CLARA VALLEY WATER CONSERVATION DISTRICT
SANTA CLARA COUNTY, CALIFORNIA
RIGHT OF WAY PLAT

SHEET 5 OF 27 SHEETS
SURVEY NO. 1A No. 12 DATE November 14th, 1950
FOR DESCRIPTION OF DUNE AVE. EXTENDED FOR LAND TO BE DEEDED TO SANTA CLARA COUNTY



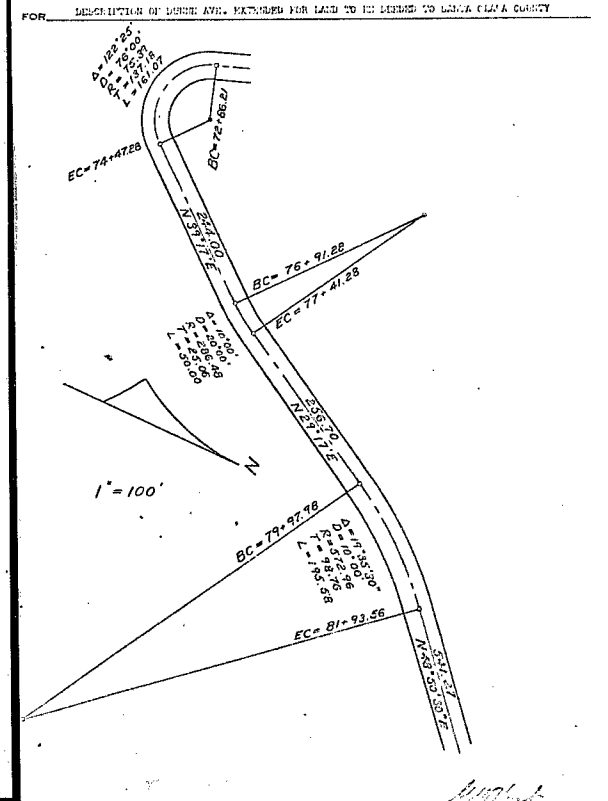
SANTA CLARA VALLEY WATER CONSERVATION DISTRICT
SANTA CLARA COUNTY, CALIFORNIA
RIGHT OF WAY PLAT

SHEET 6 OF 27 SHEETS
SURVEY NO. 1A No. 12 DATE November 14th, 1950
FOR DESCRIPTION OF DUNE AVE. EXTENDED FOR LAND TO BE DEEDED TO SANTA CLARA COUNTY



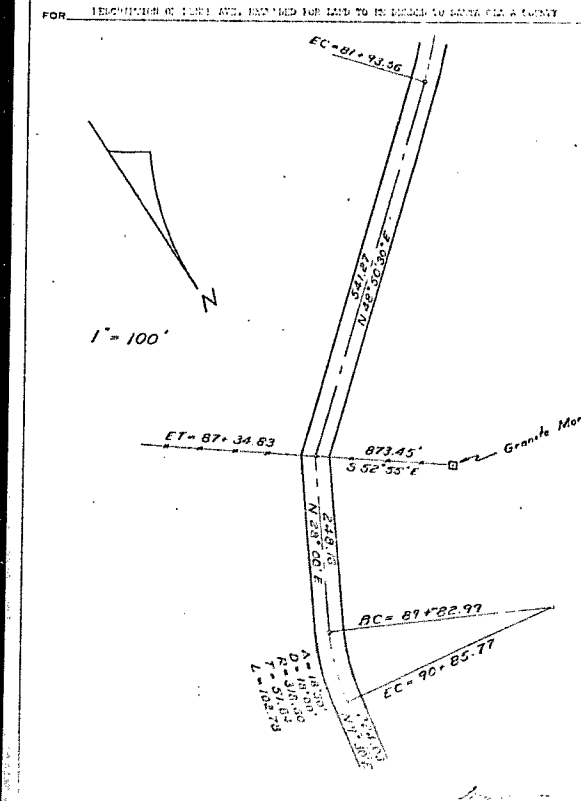
SANTA CLARA VALLEY WATER CONSERVATION DISTRICT
SANTA CLARA COUNTY, CALIFORNIA
RIGHT OF WAY PLAT

SHEET 7 OF 27 SHEETS
SURVEY NO. 1A No. 12 DATE November 14th, 1950
FOR DESCRIPTION OF DUNE AVE. EXTENDED FOR LAND TO BE DEEDED TO SANTA CLARA COUNTY



SANTA CLARA VALLEY WATER CONSERVATION DISTRICT
SANTA CLARA COUNTY, CALIFORNIA
RIGHT OF WAY PLAT

SHEET 8 OF 27 SHEETS
SURVEY NO. 1A No. 12 DATE November 14th, 1950
FOR DESCRIPTION OF DUNE AVE. EXTENDED FOR LAND TO BE DEEDED TO SANTA CLARA COUNTY



SHEET 9 OF 27 SHEETS

SHEET 11 OF 27 SHEETS

SHEET 19 OF 27 SHEETS

Diagram illustrating a vertical curve with five segments. The segments are defined by their vertical curve lengths (L) and vertical curve equations (EC).

- Segment 1: $L = 48.00$, $EC = 206 + 46.28$
- Segment 2: $L = 48.00$, $EC = 207 + 40.03$
- Segment 3: $L = 48.00$, $EC = 209 + 31.63$
- Segment 4: $L = 48.00$, $EC = 211 + 11.31$
- Segment 5: $L = 48.00$, $EC = 213 + 11.31$

The vertical curve is labeled with $M 51.95$ and $B 0.121$. The scale is $1" = 100'$.

SHEET 20 OF 27 SHEETS

BC = 214 + 31.74

PC = 215 + 46.03

DC = 216 + 19.83

EC = 225 + 12.23

A =	142.60
B =	420.86
C =	606.76
D =	800.00

1" = 100'

SHEET 21 OF 27 SHEETS

[illegible]

SHEET 22 OF 27 SHEETS

This is a technical survey map showing several land parcels and their boundaries. Key features include:

- Top Left:** A dashed line labeled "East Line Pueblo Tract No 5". Above it, a small section shows a bearing of $N 40^{\circ} 35' 55'' E$ and a distance of $24.14'$.
- Parcel 1 (Top Center):** A triangular parcel with boundary lengths $BC = 234'$, $EC = 235 + 28.94'$, and $EB = 13$. Internal points are marked with bearings and distances from vertices.
- Parcel 2 (Middle Right):** A larger parcel with boundary lengths $PRC = 238 + 47.87'$, $PC = 230 + 76.54'$, and $RC = 235 + 28.94'$. It contains internal survey points with bearings like $N 71^{\circ} 10' 10'' W$.
- Roads:** A road labeled "Steady Road" runs diagonally across the bottom half of the map. Another road segment is labeled "I.R. End Parcel No. 2".
- Parcel 3 (Bottom Right):** A parcel bounded by "Steady Road" with boundary lengths $EBC = 227 + 61.60'$, $EC = 235 + 28.94'$, and $BC = 241 + 24.9'$. Other nearby measurements include $S 67^{\circ} 10' 10'' E 68.94'$ and $N 71^{\circ} 10' 10'' W 68.94'$.
- Orientation and Scale:** A North arrow points towards the top right. A scale indicator states $1" = 100'$.

SHEET 23 OF 77 SHEETS

[illegible]

SHEET 24 OF 27 SHEETS

[illegible]

RIGHT OF WAY PLAT

SHEET 2 OF 27 SHEETS

SURVEY NO. LA No. 12

DATE: November 14, 1961

FOR DESCRIPTION OF OTHER ACTS, SEE THE INDEX TO THE RECORDS OF THE HOUSE OF REPRESENTATIVES.

through an angle of $94^{\circ}45'30''$ to Station 14+32.43; thence on a tangent to this last curve N $52^{\circ}15'30''$ W for 39.09 ft. to Station 14+34.14; thence along the arc of a curve to the left with a radius of 65.00 ft. for a distance of 72.83 ft. through an angle of $64^{\circ}00'$ to Station 14+54.09; thence on a tangent to this last curve S $41^{\circ}17'45''$ W for 11.33 ft. to Station 14+11.42; thence station lines on the face of concrete on the South and East sides of the bridge. The centerline of the bridge is a straight line 301.36 ft. long and of concrete bridge. Thence across the centerline of the bridge to the left with a radius of 113.20 ft. for a distance of 71.11 ft. through an angle of $27^{\circ}51'30''$ to Station 15+26.36; thence on a tangent to this last curve N $42^{\circ}12'30''$ W for 63.39 ft. to Station 15+36.27; thence on the arc of a curve to the right with a radius of 143.40 ft. for a distance of 206.00 ft. through an angle of $40^{\circ}00'$ to Station 15+56.27; thence on a tangent to this last curve S $74^{\circ}12'30''$ W for 205.35 ft. to Station 16+24.36; thence on the arc of a curve to the left with a radius of 440.74 ft. for a distance of 181.40 ft. through an angle of $13^{\circ}00'$ to Station 16+56.15; thence on a tangent to the last curve N $21^{\circ}02'30''$ W for 111.66 ft. to Station 16+56.01; thence on the arc of a curve to the left with a radius of 235.28 ft. for a distance of 164.00 ft. through an angle of $35^{\circ}00'$ to Station 16+59.01; thence on a tangent to the last curve S $74^{\circ}12'30''$ W for 205.35 ft. to Station 16+59.04; thence on the arc of a curve to the left with a radius of 941.49 ft. for a distance of 200.00 ft. through an angle of $13^{\circ}00'$ to Station 16+59.24; thence on a tangent to the last curve N $71^{\circ}10'30''$ W for 42.92 ft. to Station 16+33.14; thence on the arc of a curve to the left with a radius of 710.20 ft. for a distance of 164.00 ft. through an angle of $40^{\circ}00'$ to Station 16+33.14; thence on a tangent to the last curve S $74^{\circ}12'30''$ W for 205.35 ft. to Station 16+33.15; thence on the arc of a curve to the left with a radius of 714.20 ft. for a distance of 50.00 ft. through an angle of $60^{\circ}00'$ to Station 16+34.11; thence on a tangent to the last curve N $53^{\circ}12'30''$ W for 65.64 ft. to a point on the township line between Section 13 & 7 & 8 N and Section 17 & 9 S R 14 E T 14 N. thence bears S $81^{\circ}00'$ W a distance of 200.34 ft. from a 1" iron pipe to the center of the curve. thence on the arc of a curve to the left with a radius of 113.20 ft. for a distance of 71.11 ft. thence along the very same tangent N $53^{\circ}12'30''$ W for 65.64 ft. to Station 16+34.15; thence on the arc of a curve to the left with a radius of 113.87 ft. for a distance of 167.65 ft. thence on the arc of a curve to the left with a radius of 311.33 ft. for a distance of 215.00 ft. through an angle of $6^{\circ}40'$ to Station 17+04.04; thence on a tangent to the last curve S $47^{\circ}13'30''$ W for 111.66 ft. to Station 17+13.34; thence on the arc of a curve to the left with a radius of 220.40 ft. for a distance of 171.93 ft. thence on the arc of a curve to the left with a radius of 274.50 ft. to Station 17+25.00; thence on a tangent to the last curve S $7^{\circ}02'40''$ W for 43.32 ft. to Station 17+41.71; thence on the arc of a curve to the right with a radius of 220.40 ft. for a distance of 130.12 ft. through an angle of $39^{\circ}24'30''$ to Station 17+41.94; thence on a tangent to the last curve S $7^{\circ}02'40''$ W for 43.32 ft. to Station 17+41.94; thence on the arc of a curve to the left with a radius of 220.40 ft. for a distance of 130.12 ft. to a point on the township line between Section 13 & 7 & 8 N and Section 17 & 9 S R 14 E T 14 N. thence continuing along the same curve for an additional distance of 164.00 ft. through an angle of $40^{\circ}00'$ to Station 18+05.94; thence on a tangent to the last curve S $74^{\circ}12'30''$ W for 205.35 ft. to Station 18+05.94; thence on the arc of a curve to the left with a radius of 941.49 ft. for a distance of 200.00 ft. through an angle of $13^{\circ}00'$ to Station 18+05.12; thence on the arc of a curve to the left with a radius of 114.60 ft. for a distance of 106.00 ft. through an angle of $6^{\circ}40'$ to Station 18+35.12; thence on a tangent to the last curve S $47^{\circ}13'30''$ W for 111.66 ft. to Station 18+44.71; thence on the arc of a curve to the left with a radius of 220.40 ft. for a distance of 171.93 ft. thence on the arc of a curve to the left with a radius of 274.50 ft. to Station 18+56.36; thence on a tangent to the last curve S $7^{\circ}02'40''$ W for 43.32 ft. to Station 18+71.71; thence on the arc of a curve to the right with a radius of 220.40 ft. for a distance of 130.12 ft. through an angle of $39^{\circ}24'30''$ to Station 18+71.94; thence on a tangent to the last curve S $7^{\circ}02'40''$ W for 43.32 ft. to Station 18+71.94; thence on the arc of a curve to the left with a radius of 220.40 ft. for a distance of 130.12 ft. to a point on the township line between Section 13 & 7 & 8 N and Section 17 & 9 S R 14 E T 14 N. thence continuing along the same curve for an additional distance of 164.00 ft. through an angle of $40^{\circ}00'$ to Station 19+35.94; thence on a tangent to the last curve S $74^{\circ}12'30''$ W for 205.35 ft. to Station 19+35.94; thence on the arc of a curve to the left with a radius of 941.49 ft. for a distance of 200.00 ft. through an angle of $13^{\circ}00'$ to Station 19+35.12; thence on the arc of a curve to the left with a radius of 114.60 ft. for a distance of 106.00 ft. through an angle of $6^{\circ}40'$ to Station 19+65.12; thence on a tangent to the last curve S $47^{\circ}13'30''$ W for 111.66 ft. to Station 19+74.71; thence on the arc of a curve to the left with a radius of 220.40 ft. for a distance of 171.93 ft. thence on the arc of a curve to the left with a radius of 274.50 ft. to Station 19+86.36; thence on a tangent to the last curve S $7^{\circ}02'40''$ W for 43.32 ft. to Station 19+91.71; thence on the arc of a curve to the right with a radius of 220.40 ft. for a distance of 130.12 ft. through an angle of $39^{\circ}24'30''$ to Station 19+91.94; thence on a tangent to the last curve S $7^{\circ}02'40''$ W for 43.32 ft. to Station 19+91.94; thence on the arc of a curve to the left with a radius of 220.40 ft. for a distance of 130.12 ft. to a point on the township line between Section 13 & 7 & 8 N and Section 17 & 9 S R 14 E T 14 N. thence continuing along the same curve for an additional distance of 164.00 ft. through an angle of $40^{\circ}00'$ to Station 20+55.94; thence on a tangent to the last curve S $74^{\circ}12'30''$ W for 205.35 ft. to Station 20+55.94; thence on the arc of a curve to the left with a radius of 941.49 ft. for a distance of 200.00 ft. through an angle of $13^{\circ}00'$ to Station 20+55.12; thence on the arc of a curve to the left with a radius of 114.60 ft. for a distance of 106.00 ft. through an angle of $6^{\circ}40'$ to Station 20+85.12; thence on a tangent to the last curve S $47^{\circ}13'30''$ W for 111.66 ft. to Station 20+94.71; thence on the arc of a curve to the left with a radius of 220.40 ft. for a distance of 171.93 ft. thence on the arc of a curve to the left with a radius of 274.50 ft. to Station 20+96.36; thence on a tangent to the last curve S $7^{\circ}02'40''$ W for 43.32 ft. to Station 20+91.71; thence on the arc of a curve to the right with a radius of 220.40 ft. for a distance of 130.12 ft. through an angle of $39^{\circ}24'30''$ to Station 20+91.94; thence on a tangent to the last curve S $7^{\circ}02'40''$ W for 43.32 ft. to Station 20+91.94; thence on the arc of a curve to the left with a radius of 220.40 ft. for a distance of 130.12 ft. to a point on the township line between Section 13 & 7 & 8 N and Section 17 & 9 S R 14 E T 14 N. thence continuing along the same curve for an additional distance of 164.00 ft. through an angle of $40^{\circ}00'$ to Station 21+55.94; thence on a tangent to the last curve S $74^{\circ}12'30''$ W for 205.35 ft. to Station 21+55.94; thence on the arc of a curve to the left with a radius of 941.49 ft. for a distance of 200.00 ft. through an angle of $13^{\circ}00'$ to Station 21+55.12; thence on the arc of a curve to the left with a radius of 114.60 ft. for a distance of 106.00 ft. through an angle of $6^{\circ}40'$ to Station 21+85.12; thence on a tangent to the last curve S $47^{\circ}13'30''$ W for 111.66 ft. to Station 21+94.71; thence on the arc of a curve to the left with a radius of 220.40 ft. for a distance of 171.93 ft. thence on the arc of a curve to the left with a radius of 274.50 ft. to Station 21+96.36; thence on a tangent to the last curve S $7^{\circ}02'40''$ W for 43.32 ft. to Station 21+91.71; thence on the arc of a curve to the right with a radius of 220.40 ft. for a distance of 130.12 ft. through an angle of $39^{\circ}24'30''$ to Station 21+91.94; thence on a tangent to the last curve S $7^{\circ}02'40''$ W for 43.32 ft. to Station 21+91.94; thence on the arc of a curve to the left with a radius of 220.40 ft. for a distance

RIGHT OF WAY PLAT

SHEET: 7 OF 27 SHEETS

SURVEY NO. 2222

DATE: Nov 14, 1964

FOR: PERSONAL USE OF JOHN. W. SUTHERLAND, JR. 1000 N. 17TH AVE. DENVER, CO. 80202

left with a radius of 347.25 ft. for a distance of 123.33 ft. through an angle of 35°00' to Station 1376+00.00; thence on a tangent to the last curve N 69°07'13" E for 74.6 ft. to Station 1376+41.13; thence on the arc of a curve to the right with a radius of 120.45 ft. for a distance of 100.00 ft. through an angle of 47°33' to Station 1376+54.13; thence on a tangent to the last curve N 17°54'15" E for 13.5 ft. to Station 1376+71.13; thence on the arc of a curve to the left with a radius of 100.00 ft. through an angle of 45°00' to Station 1376+74.13; thence on a tangent to the last curve N 69°34'15" E for 74.23 ft. to Station 1376+84.13; thence on the arc of a curve to the right with a radius of 131.41 ft. for a distance of 100.00 ft. through an angle of 56°03' to Station 1376+94.13; thence on a tangent to the last curve N 9°44'15" E for 129.8 ft. to Station 1376+74.13; thence on the arc of a curve to the left with a radius of 100.00 ft. for a distance of 100.00 ft. through an angle of 49°30' to Station 1376+74.13; thence on a tangent to the last curve N 70°24'15" E for 74.11 ft. to Station 1376+84.13; thence on the arc of a curve to the right with a radius of 119.37 ft. for a distance of 11.75 ft. through an angle of 49°00' to Station 1376+90.13; thence on a tangent to the last curve N 33°15'15" E for 129.8 ft. to Station 1376+94.13; thence on the arc of a curve to the left with a radius of 111.36 ft. for a distance of 100.00 ft. through an angle of 47°00' to Station 1376+31.63; thence on a tangent to the last curve N 63°33'15" E for 179.6 ft. to Station 1376+11.13; thence on the arc of a curve to the right with a radius of 301.37 ft. for a distance of 200.00 ft. through an angle of 36°00' to Station 1213+11.13; thence on a tangent to the last curve N 33°15'15" E for 129.8 ft. to Station 1213+41.13; thence on the arc of a curve to the left with a radius of 317.40 ft. for a distance of 114.22 ft. through an angle of 20°00' to Station 1214+00.00; thence on a tangent to the last curve N 71°24'15" E for 13.50 ft. to Station 1214+13.50; thence on the arc of a curve to the right with a radius of 407.24 ft. for a distance of 600.00 ft. through an angle of 13°30' to Station 1214+73.50; thence on a tangent to the last curve N 25°15'15" E for 94.40 ft. to Station 1215+14.13; thence on the arc of a curve to the left with a radius of 301.50 ft. for a distance of 100.00 ft. through an angle of 19°00' to Station 1215+44.13; thence on a tangent to the last curve N 41°25'42" E for 139.6 ft. to Station 1215+84.13; thence on the arc of a curve to the left with a radius of 200.44 ft. for a distance of 100.00 ft. through an angle of 19°00' to Station 1216+14.13; thence on a tangent to the last curve N 24°15'15" E for 240.24 ft. to Station 1216+61.24; thence on the arc of a curve to the left with a radius of 220.37 ft. for a distance of 173.74 ft. through an angle of 49°04' to Station 1216+105.74; thence on a tangent to the last curve N 71°15'15" E for 67.13 ft. to Station 1216+47.74; thence on the arc of a curve to the left with a radius of 200.00 ft. through an angle of 19°00' to Station 1216+47.74; thence on a tangent to the last curve N 25°15'15" E for 94.40 ft. to Station 1216+84.13; thence on the arc of a curve to the left with a radius of 181.49 ft. for a distance of 200.00 ft. through an angle of 49°00' to an iron pipe designated as Station 1216+74.24 in the point of ending of the centerline of that uniform street; thence on the arc of a curve to the left with a radius of 200.00 ft. through an angle of 13°30' to Station 1217° 30' E and Section 13 T 9 S 4 E half-section (approximately 1217.30 ft. curve) and being designated as Parcel 31.

PARCEL 2

[illegible]

RIGHT OF WAY PLAT

SHEET 27 OF 27 SHEETS

SURVEY NO. 1000

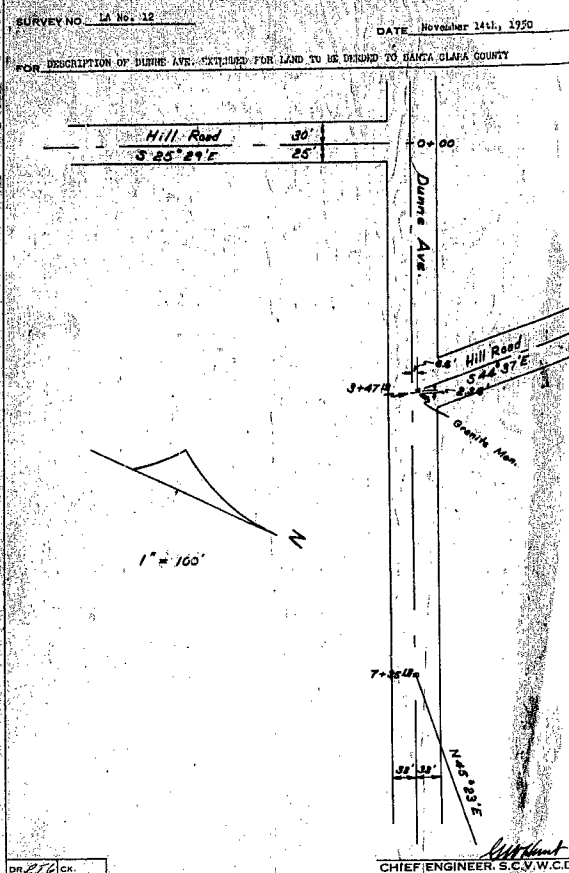
DATE 2004.02.11

FOR _____

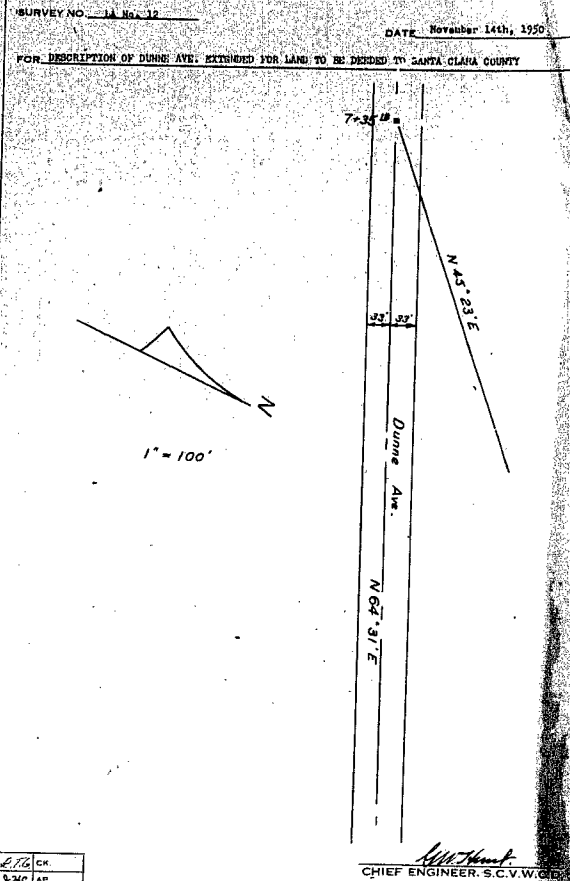
ft. to a point; thence S 34°45'W 10.00 ft. to the point of beginning.

Containing approximately 1.1 acre or less are being designated as
 here. In 2.

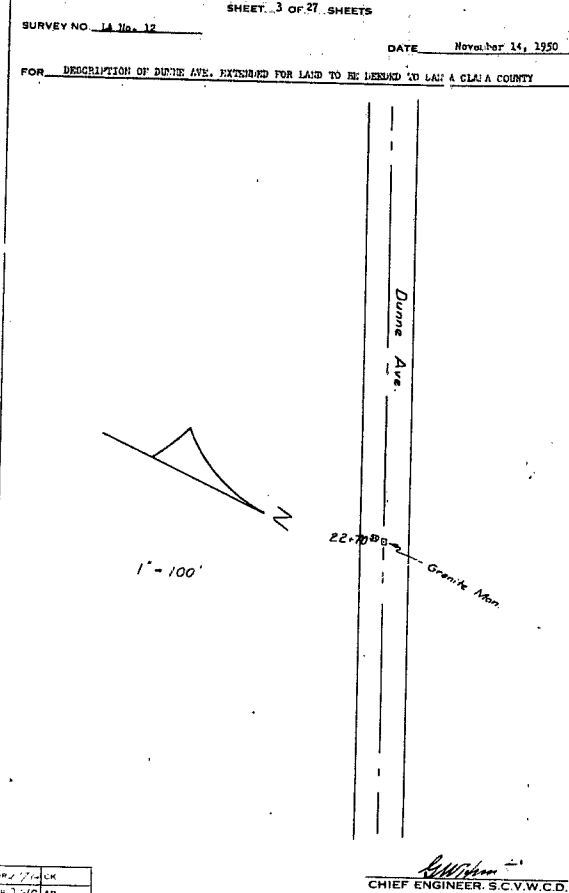
SANTA CLARA VALLEY WATER CONSERVATION DISTRICT
SANTA CLARA COUNTY, CALIFORNIA
RIGHT OF WAY PLAT



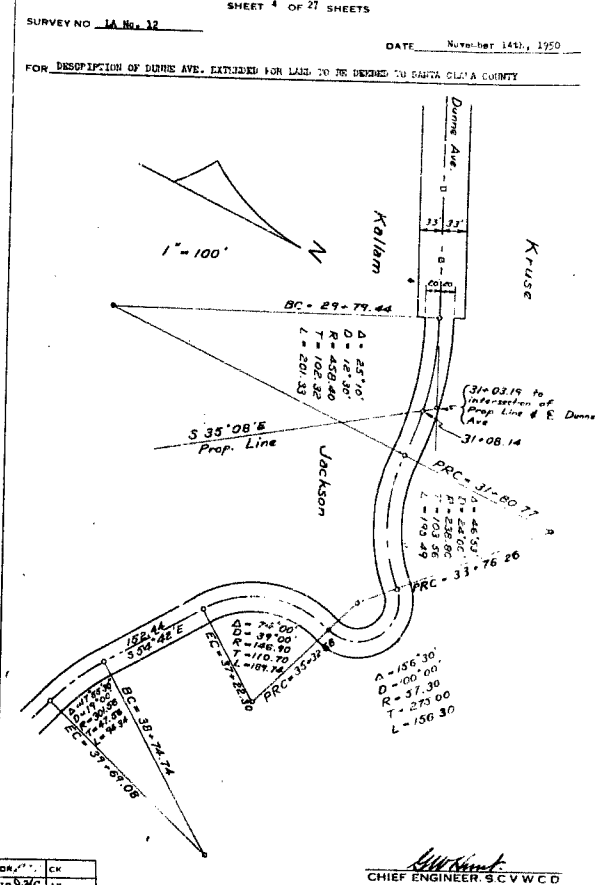
SANTA CLARA VALLEY WATER CONSERVATION DISTRICT
SANTA CLARA COUNTY, CALIFORNIA
RIGHT OF WAY PLAT



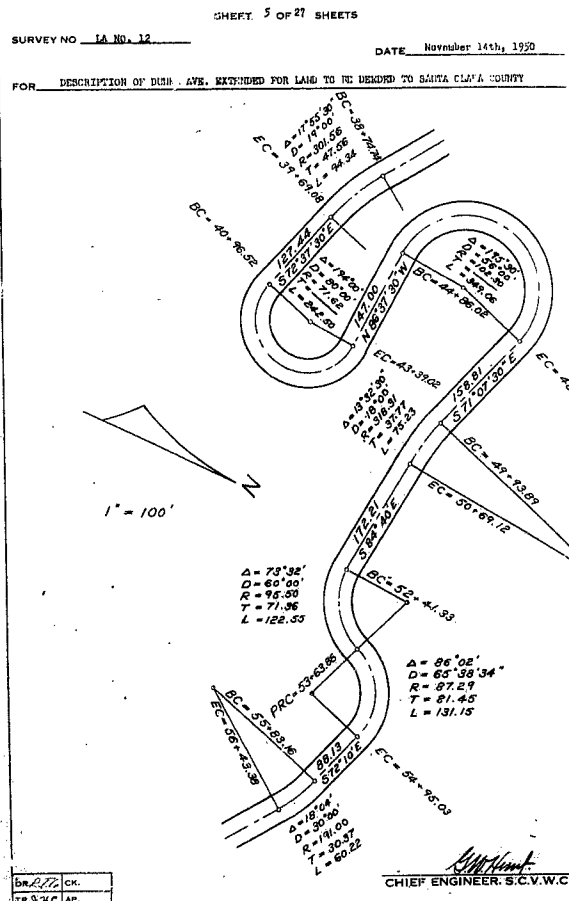
SANTA CLARA VALLEY WATER CONSERVATION DISTRICT
SANTA CLARA COUNTY, CALIFORNIA
RIGHT OF WAY PLAT



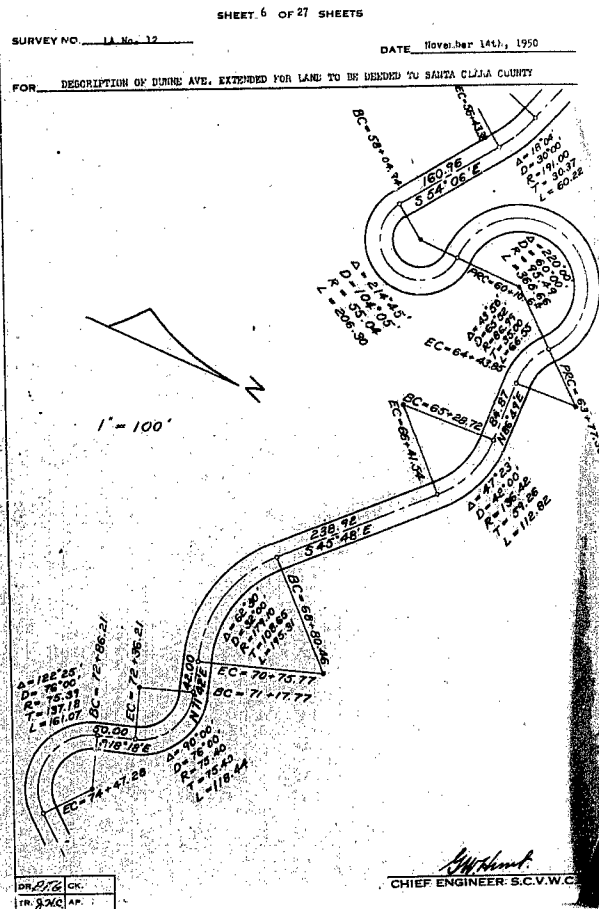
SANTA CLARA VALLEY WATER CONSERVATION DISTRICT
SANTA CLARA COUNTY, CALIFORNIA
RIGHT OF WAY PLAT



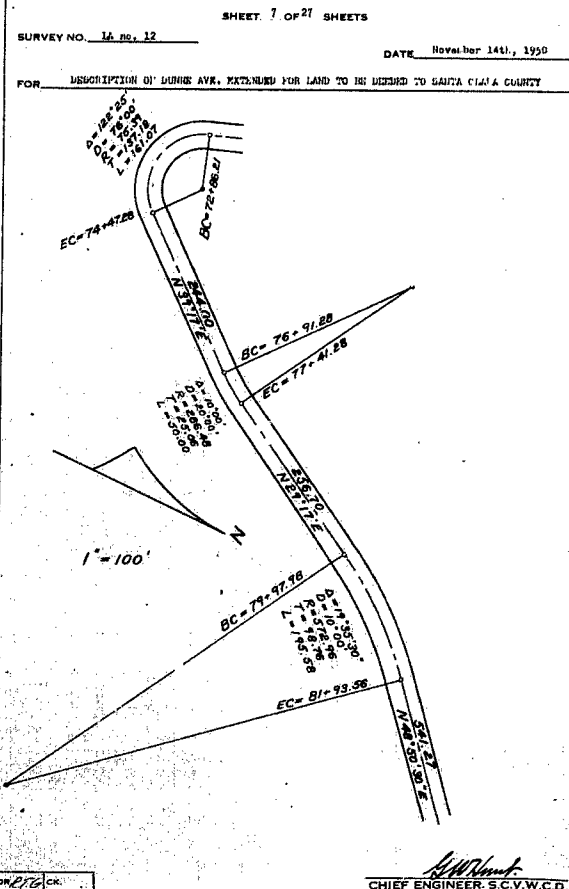
SANTA CLARA VALLEY WATER CONSERVATION DISTRICT
SANTA CLARA COUNTY, CALIFORNIA
RIGHT OF WAY PLAT



SANTA CLARA VALLEY WATER CONSERVATION DISTRICT
SANTA CLARA COUNTY, CALIFORNIA
RIGHT OF WAY PLAT



SANTA CLARA VALLEY WATER CONSERVATION DISTRICT
SANTA CLARA COUNTY, CALIFORNIA
RIGHT OF WAY PLAT



SANTA CLARA VALLEY WATER CONSERVATION DISTRICT
SANTA CLARA COUNTY, CALIFORNIA
RIGHT OF WAY PLAT

