

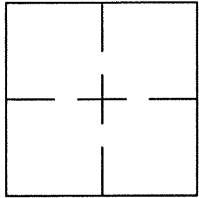
CORNER RECORD

Document Number CR 8216

City of OAKLAND

County of ALAMEDA, California

Brief Legal Description WELL MONUMENT LOCATED WITHIN TELEGRAPH AVE AND 17TH STREET.



CORNER RECORD

Government Corner ☐ Control ☒
 Meander ☐ Property ☐
 Rancho ☐ Other ☐
 Date of Survey 2/18/16

COORDINATES
(Optional)

N. _____
 E. _____
 Zone _____ Datum _____
 Elev. _____

Corner — Left as found ☒ Found and tagged ☐ Established ☐ Reestablished ☐ Rebuilt ☐

Identification and type of corner found: Evidence used to identify or procedure used to establish of reestablish the corner:
FOUND BRASS DISC IN WELL MONUMENT INTERSECTION OF TELEGRAPH AVE AND 17TH STREET.

AS SHOWN ON CITY OF OAKLAND MONUMENT MAP, PAGE 221

CITY MONUMENT DESIGNATION NUMBER AT SUBJECT LOCATION 85E6.

THIS POINT WAS FOUND IN GOOD CONDITION AFTER A CONSTRUCTION PROJECT
IN THE VICINITY.

A description of the physical condition of the monument as found and as set or reset: _____

FOUND AND SET POINTS AS SHOWN ON PAGE 2.

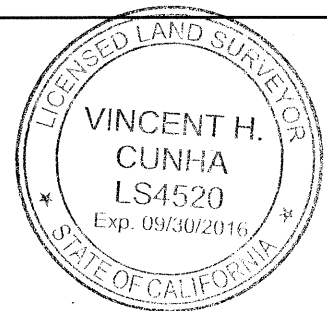
THESE TIES ARE FOR THE PURPOSE OF PERPETUATING THE FOUND MONUMENTATION.

NO CLAIM IS MADE AS TO THE RELATIONSHIP OF THE POINTS OR LINES SHOWN HEREON
TO TRUE BOUNDARY LOCATIONS.

SURVEYOR'S STATEMENT

This Corner Record was prepared by me or under my direction in conformance with
 the Land Surveyors' Act on MARCH 4, 2016.

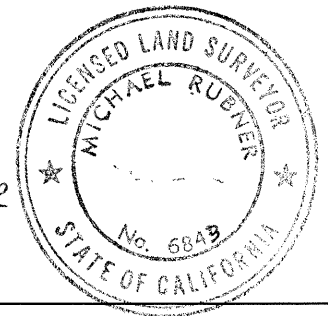
Signed Vincent H. Cunha L.S. Number LS 4520
VINCENT H. CUNHA



COUNTY SURVEYOR'S STATEMENT

This Corner Record was received 9 MARCH 2016 and examined
 and filed 30 \$ MARCH 2016.

Signed Michael Rubner Title COUNTY SURVEYOR



County Surveyor's Comment _____

SEE CR 6605



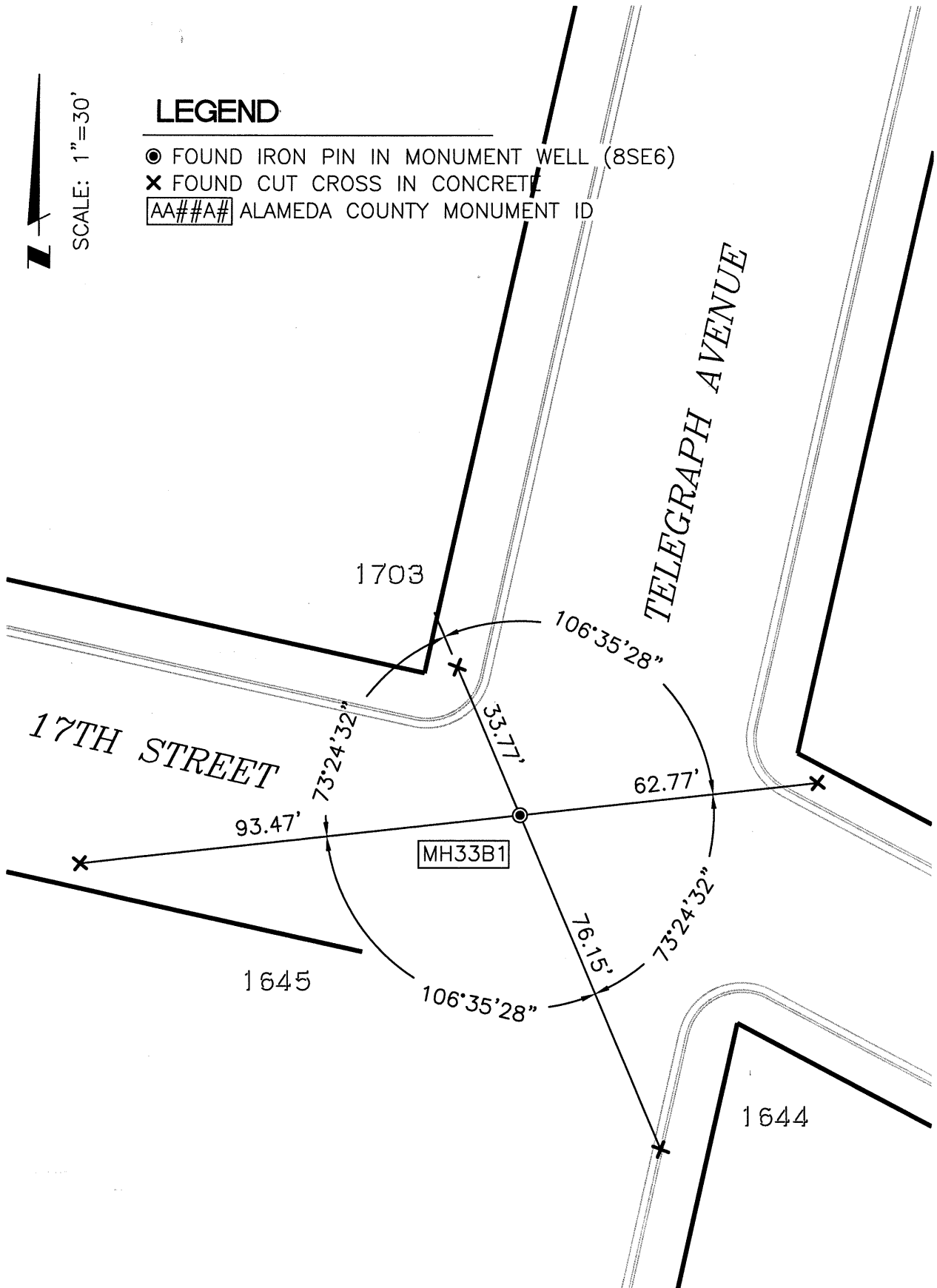
SCALE: 1"=30'

LEGEND

● FOUND IRON PIN IN MONUMENT WELL (8SE6)

✕ FOUND CUT CROSS IN CONCRETE

AA##A# ALAMEDA COUNTY MONUMENT ID



214072-Telegraph-CR2