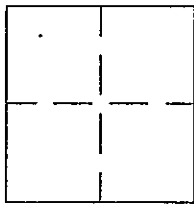


CORNER RECORD

APN No. _____ (Optional) Document Number CR 1130
 City of _____ County of ALAMEDA, California
 Brief Legal Description STANDARD COUNTY MONUMENTS ON MEADOWLARK DRIVE.

**CORNER TYPE**

Government Corner ☐ Control ☐
 Meander ☐ Property ☐
 Rancho ☐ Other ☒
 Date of Survey JULY 27, 1998

COORDINATES
(Optional)

N. _____
 E. _____
 Zone _____ Datum _____
 Elev. _____

Corner - Left as found ☒ Found and tagged ☐ Established ☐ Reestablished ☐ Rebuilt ☐

In compliance with Section 8771 of the Professional Land Surveyors' Act, this corner record is being filed to
 ESTABLISH X / REESTABLISH _____ the position of an existing monument PRIOR X / SUBSEQUENT _____
 to street or highway reconstruction. (Use this portion only when applicable.)

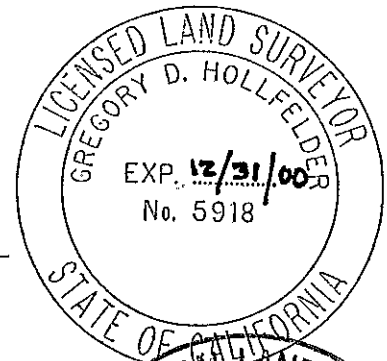
Identification and type of corner found: Evidence used to identify or procedure used to establish or reestablish the corner:
THE MONUMENTS DESCRIBED BELOW WERE REFERENCED BY STRAIGHT LINES THROUGH
MONUMENT PINS AND DISTANCES SHOWN ON DIAGRAM.

A description of the physical condition of the monument as found and as set or reset: FOUND ALAMEDA COUNTY
MONUMENTS SHOWN ON TRACT MAP 1914 AND 2229, FOUND PINS IN CONCRETE
POSTS AT VARIOUS DEPTHS BELOW SURFACE, (DEPTHS SHOWN ON DIAGRAM),
ALL FOUND MONUMENTS WERE IN GOOD CONDITION.

SURVEYOR'S STATEMENT

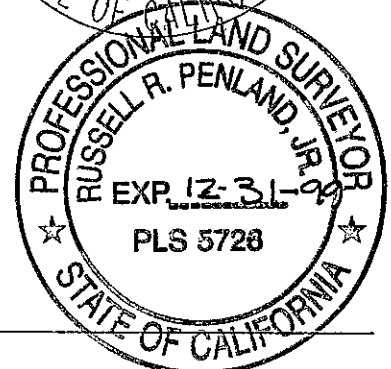
This Corner Record was prepared by me or under my direction in conformance with
 the Land Surveyors' Act on DECEMBER 11 19 98.

Signed Gregory D. Hollfelder L.S. or R.C.E. Number 5918

**COUNTY SURVEYOR'S STATEMENT**

This Corner Record was received 12-15 19 98 and examined
 and filed B-12A 19 99

Signed Russell R. Penland, Jr. Title Deputy County Surveyor



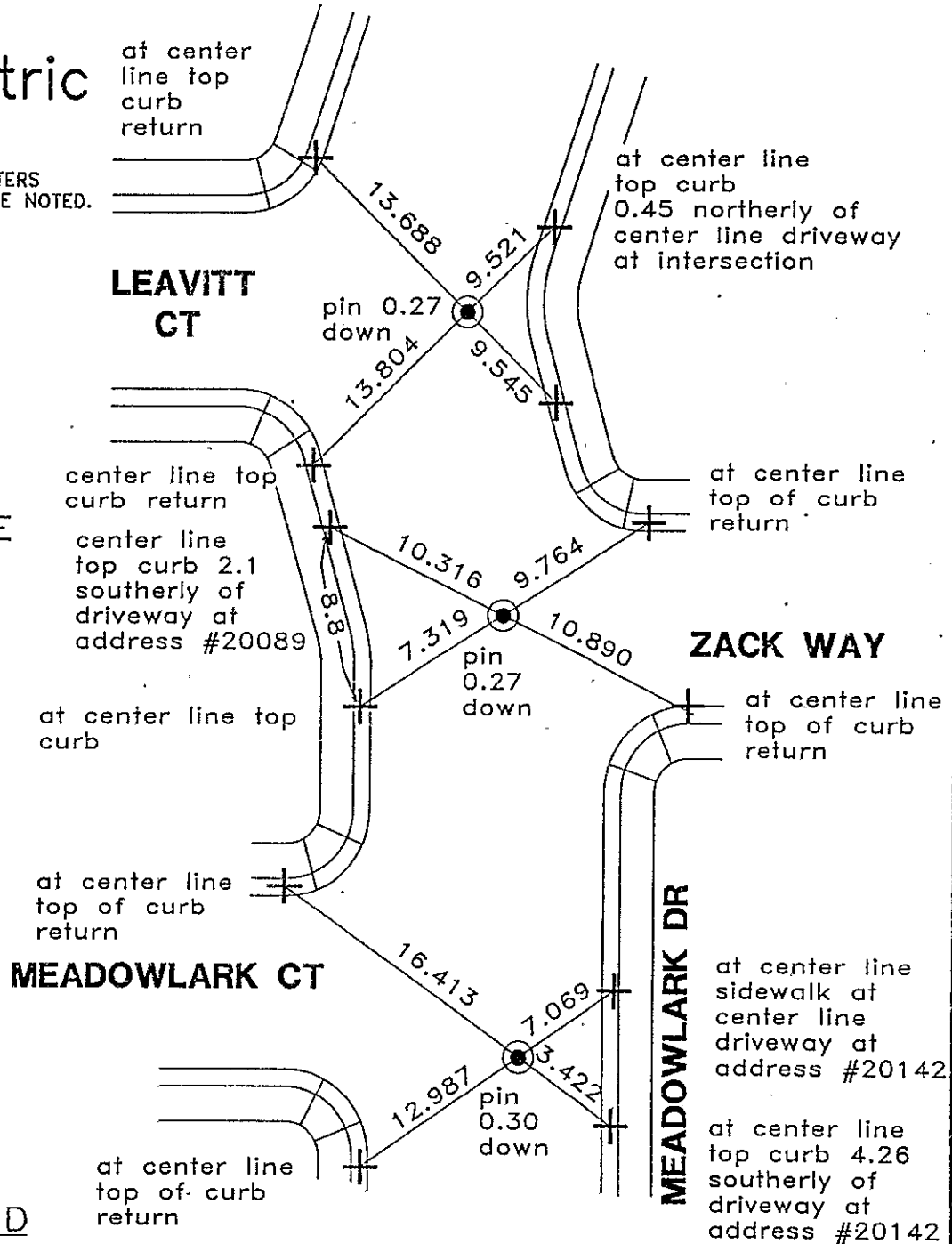
County Surveyor's Comment _____

ALAMEDA COUNTY **Metric**

UNITS ARE IN METERS
UNLESS OTHERWISE NOTED.



NO SCALE



LEGEND

- FOUND STANDARD ALAMEDA COUNTY MONUMENTS, PIN IN CONCRETE POST, AT VARIOUS DEPTHS BELOW SURFACE.
- + SET CHISELED "+" IN CONCRETE.

REFERENCE(S)

PER TRACT MAP 1914, BOOK 38 PAGE 86, AND TRACT MAP 2229, BOOK 44 PAGE 16.
FIELD BOOK LL-4030-1