

# CORNER RECORD

Agency Index

BK 107 PG 22

Document Number

CR 9890 AMENDED

City of OAKLAND

County of

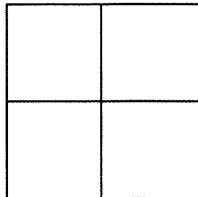
ALAMEDA

, California

Brief Legal Description FOUND E.B.M.U.D. CINCH NAIL

## CORNER TYPE

## COORDINATES (Optional)



Government Corner ☐ Control ☒  
Meander ☐ Property ☐  
Rancho ☐ Other ☐

Date of Survey 3/16/17

N. \_\_\_\_\_ E. \_\_\_\_\_

Elevation \_\_\_\_\_

Units Metric ☐ U.S. Survey Foot ☐

Horizontal Datum \_\_\_\_\_

Zone \_\_\_\_\_ Epoch Date \_\_\_\_\_

Vertical Datum \_\_\_\_\_

☐ Complies with Public Resources Code §§8801-8819☐ Complies with Public Resources Code §§8890-8902

PLS Act Ref:

☐ 8765(d)☒ 8771☐ 8773☐ Other:Corner/  
Monument:☒ Left as found☐ Established☐ Rebuilt☒ Pre-Construction☐ Found and tagged☐ Reestablished☐ Referenced☐ Post-Construction

Narrative of corner identified and monument as found, set, reset, replaced, or removed:

☐ See sheet #2 for description(s) :

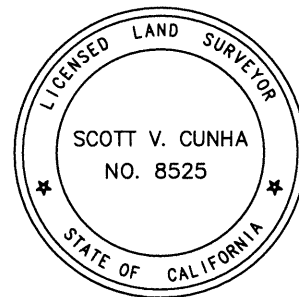
FOUND CINCH NAIL IN CURB. SEE CR 9890.

THIS CORNER RECORD IS BEING FILED TO CORRECT AN ELEVATION AS SHOWN ON CR 9890.  
SET MAG NAIL WAS SHOWN AS 178.38' AND SHOULD HAVE BEEN 192.03'

## SURVEYOR'S STATEMENT

This Corner Record was prepared by me or under my direction in conformance with

the Professional Land Surveyors' Act on MARCH 29, 2018.

Signed Scott V. Cunha P.L.S. or R.C.E. No. LS 8525  
SCOTT V. CUNHA

## COUNTY SURVEYOR'S STATEMENT

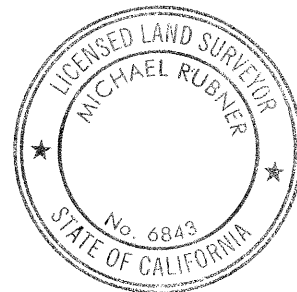
This Corner Record was received 23 APRIL, 2018

and examined and filed 27 APRIL, 2018.

Signed Michael Rubner P.L.S. or R.C.E. No. 6843

Title COUNTY SURVEYOR

County Surveyor's Comment

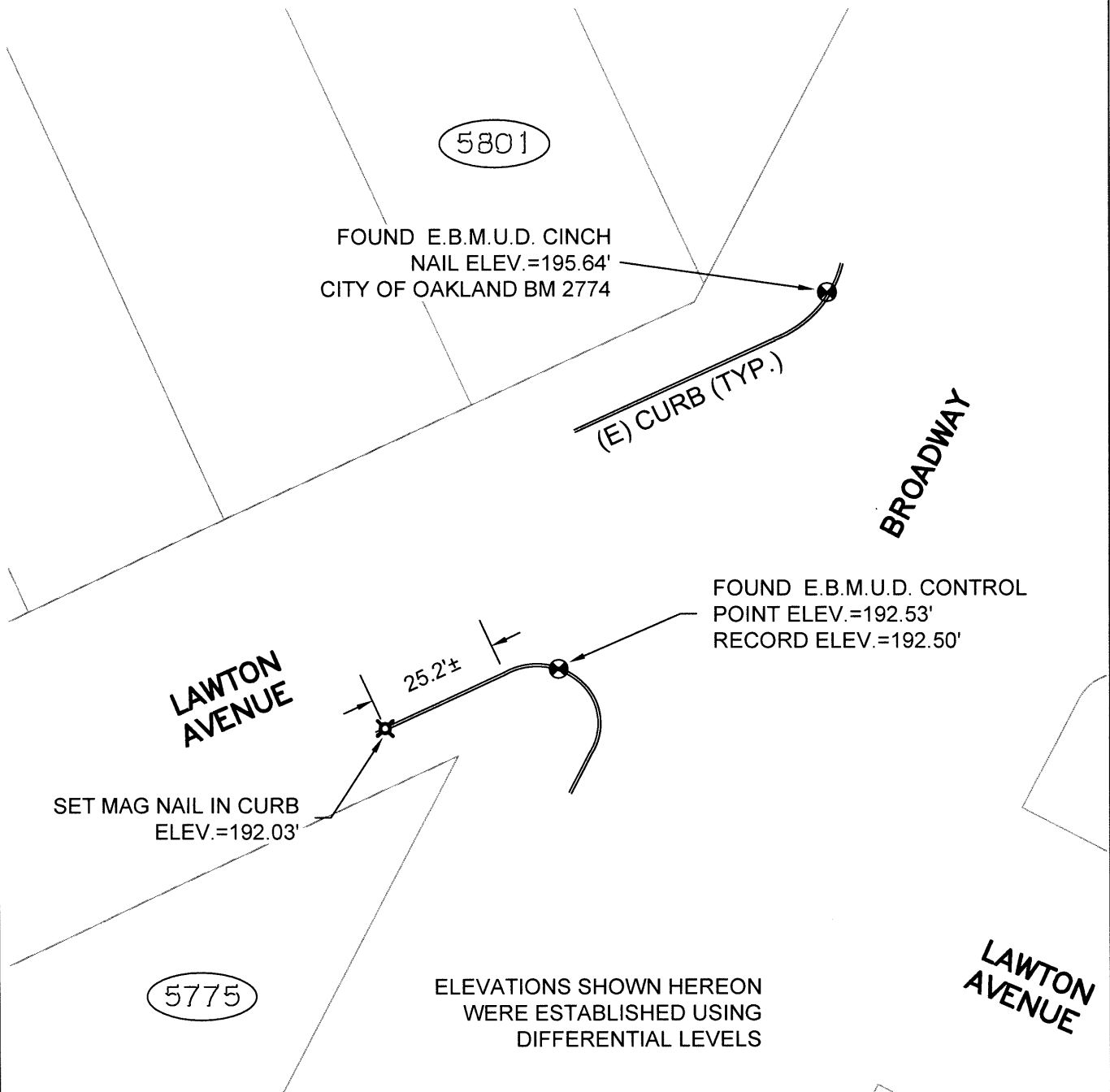


CORNER RECORD REVISED 9 APRIL, 2018

SCALE: 1"=30'

**LEGEND**

- FOUND E.B.M.U.D BENCHMARK AS NOTED
- ✕ SET MAG NAIL TEMPORARY BENCHMARK
- AA##A# ALAMEDA COUNTY MONUMENT ID
- 19592 REFERENCE STREET ADDRESS



217032-POST-CR5R1