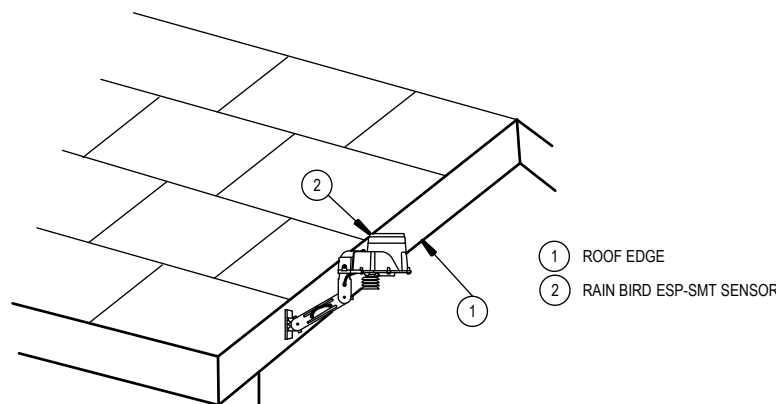
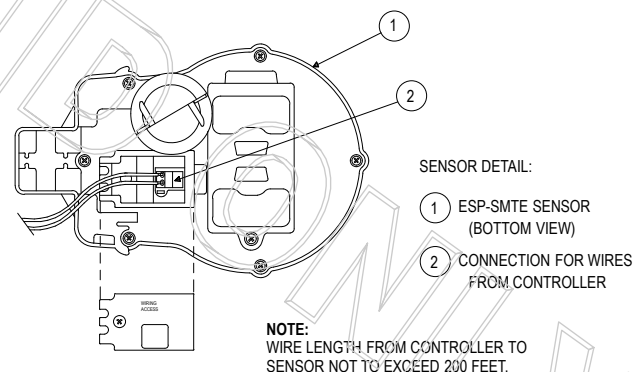
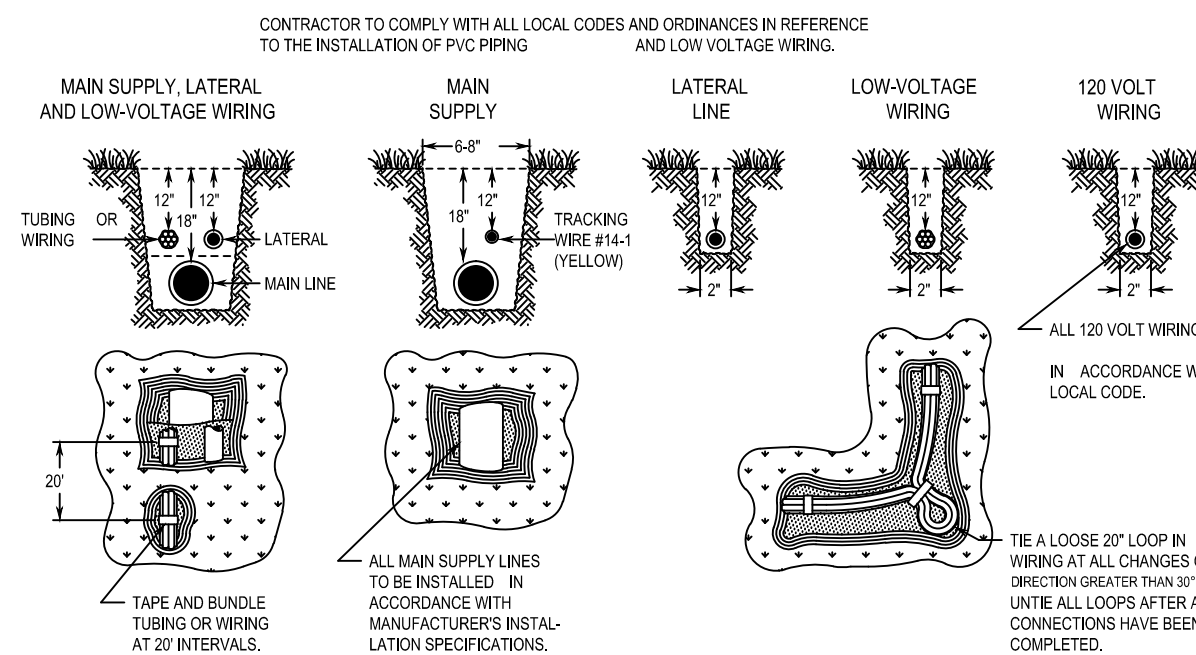


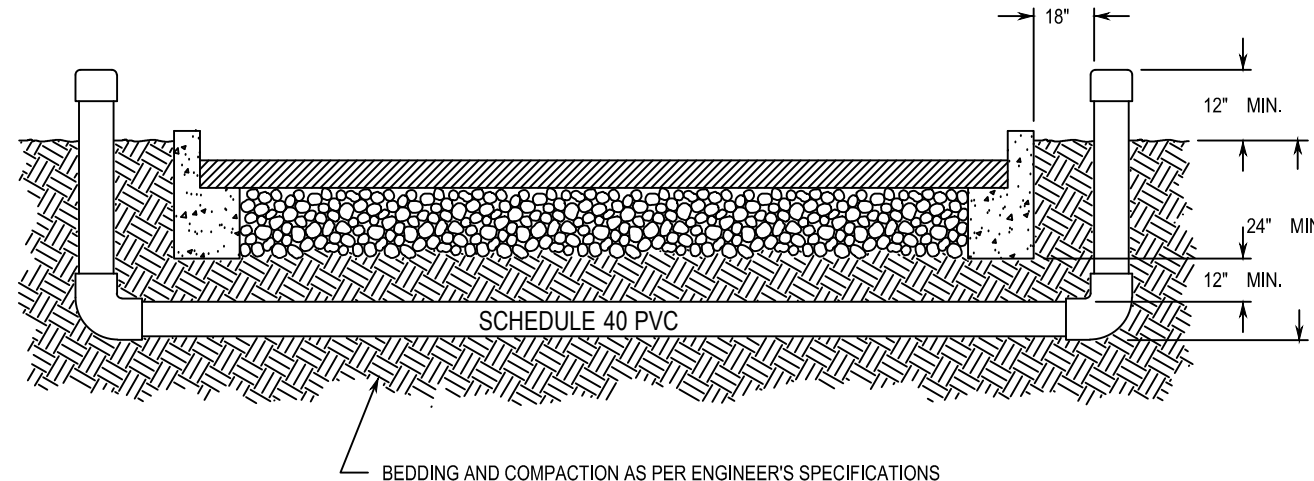
- GENERAL NOTES:
- RAIN BIRD (ESP-SMTc) INDOOR WALL MOUNT
 - 1-INCH PVC SCH 40 CONDUIT AND FITTINGS
 - WIRES TO REMOTE CONTROL VALVES AND SENSOR
 - STANDARD MODULE FOR 4-STATION CONTROLLER
 - OPTIONAL MODULES FOR 22-STATION CONTROLLER
 - 100 VAC, 80 HZ EXTERNAL PLUG-IN TRANSFORMER
 - CONNECTION FOR WIRES FROM SENSOR



- NOTES:
- LENGTH OF WIRE FROM CONTROLLER TO SENSOR SHOULD BE NO GREATER THAN 200 FEET
 - SENSOR MAY BE MOUNTED ON FENCE, FENCE POST OR ON EAVE OF BUILDING
 - SENSOR SHOULD NOT BE MOUNTED UNDER TREES, IN AREAS AFFECTED BY SPRINKLER SYSTEM OR UNDER EAVE OF BUILDING



NOTE: INSTALLER OF SLEEVES SHALL BE RESPONSIBLE TO LOCATE SLEEVES IF NOT PROPERLY INSTALLED.



1 IRRIGATION SMART CONTROLLER: ESP-SMTc

SCALE:NTS

2 IRRIGATION WEATHER SENSOR

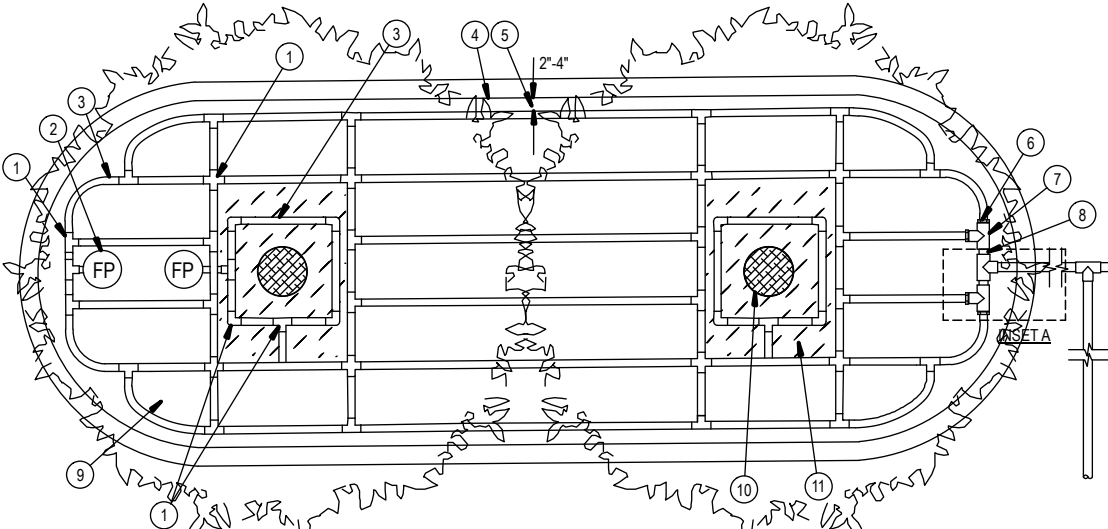
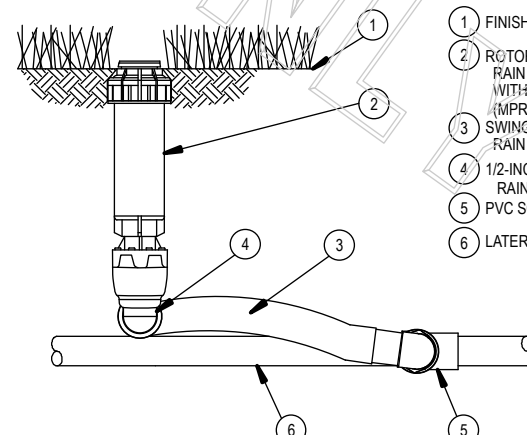
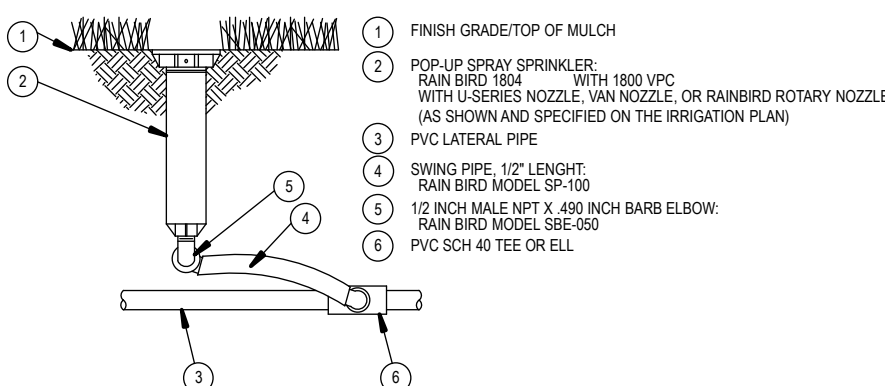
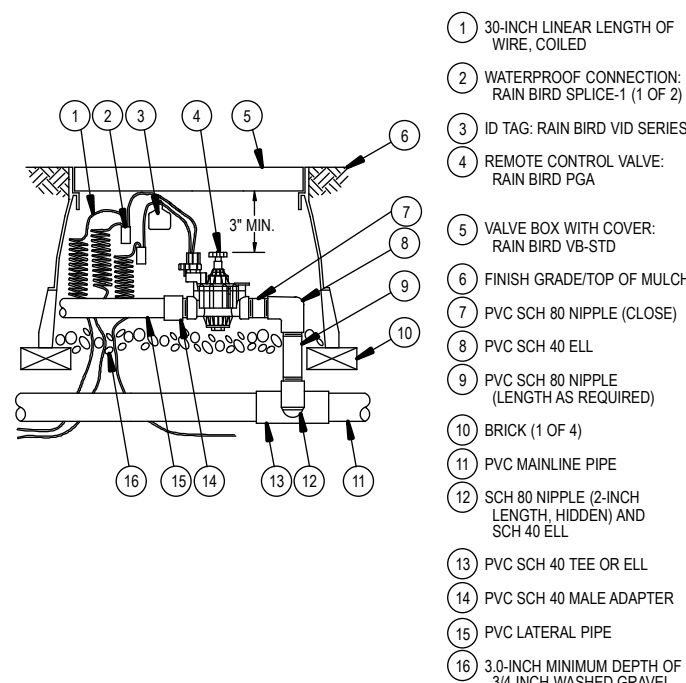
SCALE:NTS (LOCATE AT DUMBER WALL)

3 IRRIGATION TRENCHING AND PIPE DEPTH

SCALE:NTS

4 IRRIGATION SLEEVING

SCALE:NTS



XPCV Dripline Maximum Lateral Lengths (Feet)				
Inlet Pressure psi	10' Spacing		15' Spacing	
	Normal Flow (gph)	Normal Flow (gph)	Normal Flow (gph)	Normal Flow (gph)
20	152	156	204	215
30	228	235	305	321
40	305	314	408	429
50	381	392	512	537
60	457	469	617	649

- BARB X BARB INSERT EL TEE OR CROSS RAIN BIRD XFF ELBOW (TYPICAL) RAIN BIRD XFF TEE (TYPICAL) RAIN BIRD XFF CROSS (TYPICAL)
- FLUSH POINT (TYPICAL) SEE RAIN BIRD DETAIL "XFF FLUSH POINT"
- ON-SURFACE DRIPLINE PIPE RAIN BIRD XF SERIES DRIPLINE POTABLE: XFCV DRIPLINE
- PARKING ISLAND CURB
- PERMETER DRIPLINE PIPE TO BE INSTALLED 2'-4" FROM PARKING ISLAND CURB
- BARB X MALE FITTING RAIN BIRD XFF-MA FITTING (TYPICAL)
- PVC SCH 40 TEE OR EL (TYPICAL)
- PVC SUPPLY MANIFOLD
- SHRUB OR GROUND COVER BED
- TREE (TYPICAL)
- MULCH BED FOR TREE
- 2-3 INCHES DEPTH OF MULCH
- FINISH GRADE
- PVC DRIPLINE MANIFOLD FROM RAIN BIRD CONTROL ZONE VALVE KIT (SIZES TO MEET LATERAL FLOW DEMAND)
- PVC RISER PIPE

5 IRRIGATION VALVE: 100-PGA

SCALE:NTS

6 POP-UP SPRAY: 1804 SERIES

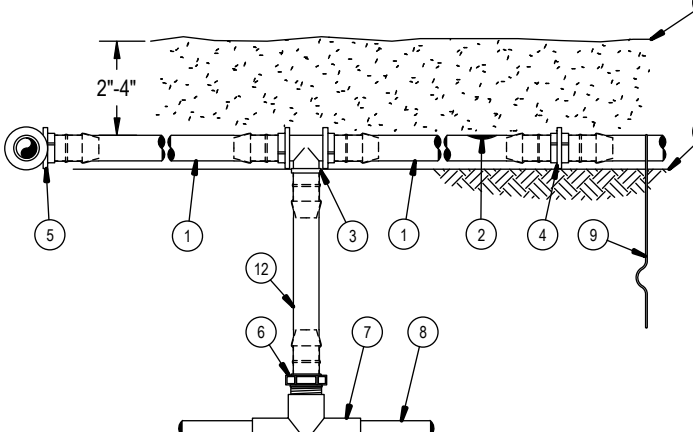
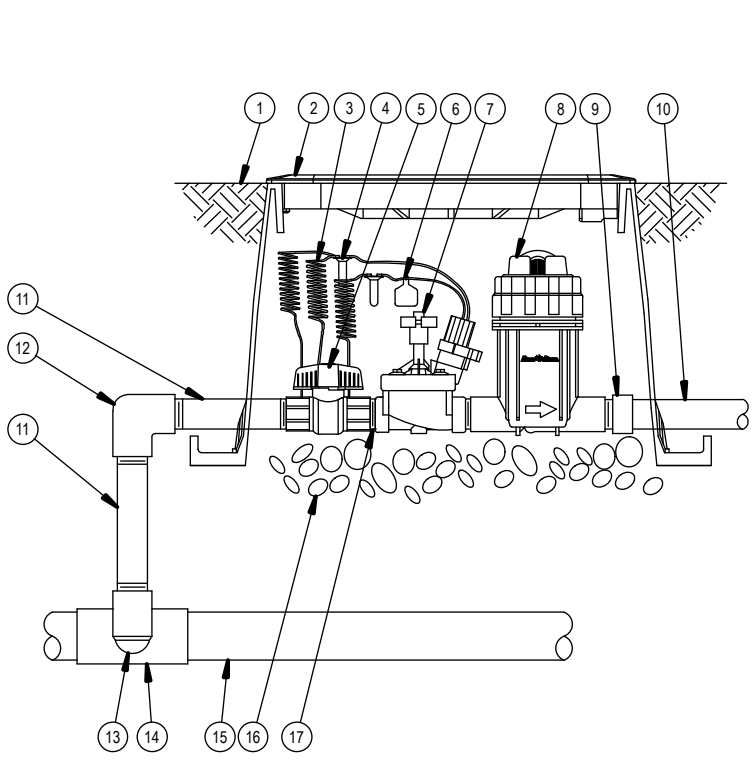
SCALE:NTS

7 POP-UP ROTOR: 5004 SERIES W/T MPR NOZZLE

SCALE:NTS

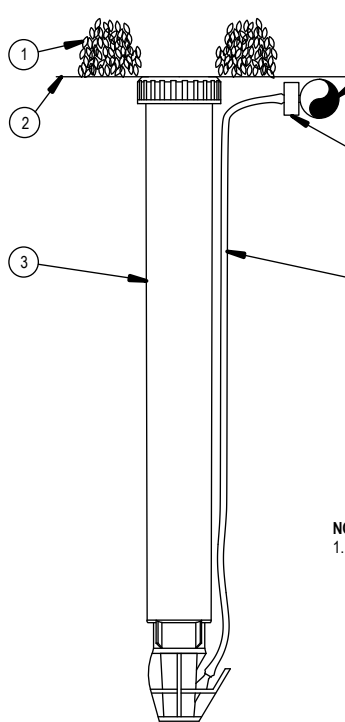
8 DRIP: SYSTEM LAYOUT AND INSTALLATION OVERVIEW

SCALE:NTS

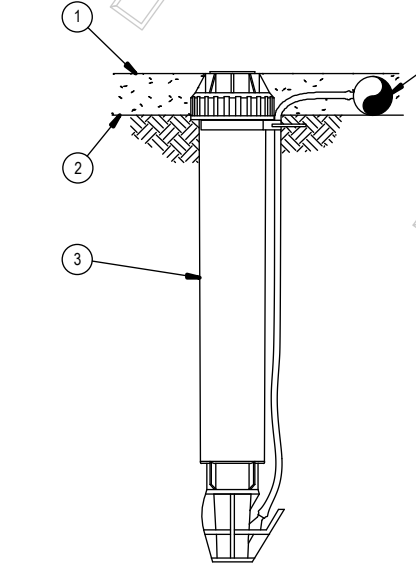


- NOTES:
- PLACE TIE DOWN STAKES EVERY THREE FEET IN SAND, FOUR FEET IN LOAM, AND FIVE FEET IN CLAY
 - AT FITTINGS WHERE THERE IS A CHANGE OF DIRECTION SUCH AS TEES OR ELBOWS, USE TIE DOWN STAKES ON EACH LEG OF THE CHANGE OF DIRECTION
 - SAVE YOUR HANDS. USE THE RAIN BIRD FITTING TOOL XFF INSERTION TOOL FOR FITTING ASSEMBLY

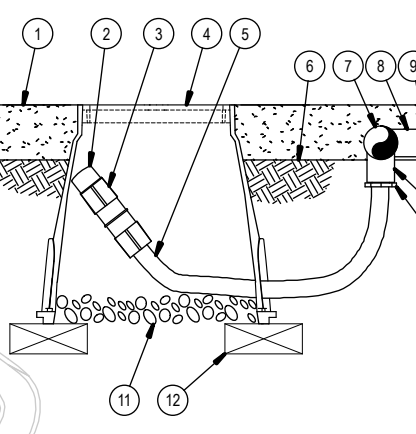
- ON-SURFACE DRIPLINE RAIN BIRD XF SERIES DRIPLINE POTABLE: XFCV DRIPLINE
- INLINE DRIPLINE EMITTER OUTLET. SEE PLANS FOR DRIPLINE OUTLET SPACING
- BARB TEE 1/4"x1/4" RAIN BIRD XFF TEE
- BARB COUPLING 1/4"x1/4" RAIN BIRD XFF-COUP
- BARB ELBOW 1/4"x1/4" RAIN BIRD XFF-ELBOW
- BARB MALE ADAPTER 1/4" X 1/2" MPT RAIN BIRD XFF-MA-050 3/4" X 3/4" MPT RAIN BIRD XFF-MA-075
- PVC TEE 1/2" S&T
- PVC LATERAL SUPPLY HEADER
- TIE DOWN STAKE RAIN BIRD TDS-050 WITH BEND (TYPICAL)
- MULCH
- FINISH GRADE
- RAIN BIRD XF SERIES BLANK TUBING LENGTH AS REQUIRED



- NOTE:
- RAIN BIRD XERI-POP CAN UTILIZE THE FOLLOWING NOZZLES: 50 SQUARE NOZZLES (FORMERLY 40X)
 - 5 SERIES MPR NOZZLES (ALL CONFIGURATIONS)
 - 5 SERIES PLASTIC TUBING
 - 8 SERIES MPR NOZZLES (H, H, H, H, H, H, H, H)



- NOTE:
- USE XERMAN TOOL XA-TOOL TO INSERT BARB TRANSFER FITTING DIRECTLY INTO DRIPLINE TUBING
 - WATER NOZZLE MAY BE SET TO CLOSED, OR IF IT IS DESIRED TO SEE SPRAY FROM THE NOZZLE, SET THE ARC TO 90 DEGREES. THE FLOW FROM THE NOZZLE, 0.3 GPM, SHOULD BE ACCOUNTED FOR IN THE SYSTEM DESIGN



- NOTE:
- ALLOW A MINIMUM OF 6 INCHES OF DRIPLINE TUBING IN VALVE BOX IN ORDER TO DIRECT FLUSHED WATER OUTSIDE VALVE BOX

- MULCH
- FLUSH CAP FOR EASY FIT COMPRESSION FITTINGS POTABLE: RAIN BIRD MDCOUP
- EASY FIT COUPLING RAIN BIRD MDCOUP
- SUBTERRANEAN EMITTER BOX: RAIN BIRD SEB-100
- 1/2" POLYETHYLENE TUBING RAIN BIRD XF BLANK TUBING FINISH GRADE
- PVC EXHAUST HEADER
- PVC SCH 40 TEE OR EL
- BARB X MALE FITTING RAIN BIRD XFF-MA FITTING (TYPICAL)
- ON-SURFACE DRIPLINE RAIN BIRD XF SERIES DRIPLINE POTABLE: XFCV DRIPLINE
- 3-INCH MINIMUM DEPTH OF 3/4" WASHED GRAVEL
- BRICK (1 OF 2)

9 DRIP VALVE: XCZ-PRB-100-COM

SCALE:NTS

10 DRIP: ON-SURFACE RISER ASSEMBLY

SCALE:NTS

11 DRIP: XERI-POP MICRO SPRAY

SCALE:NTS (FOR USE AT COLOR BEDS)

12 DRIP: PERATION INDICATOR

SCALE:NTS

13 DRIP: DRIPLINE FLUSH POINT

SCALE:NTS



Chick-fil-A
5200 Buffington Road
Atlanta, Georgia
30349-2998

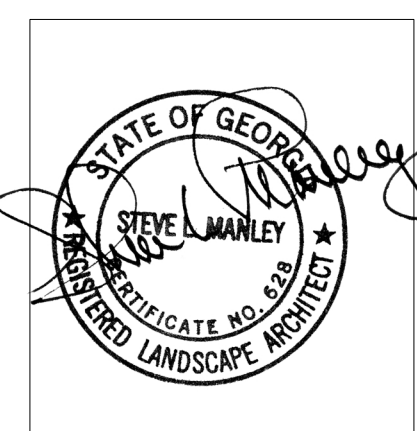


770.442.8171 tel

770.442.1123 fax

Manley Land Design, Inc.
51 Old Canton Street
Alpharetta, Georgia 30009

manleylanddesign.com



CHICK-FIL-A
Cherokee Place
115 Cherokee Place
Cartersville, GA 30121

FSU# 0534

REVISION SCHEDULE		DESCRIPTION
NO.	DATE	

2 11.12.18 Issued For Bid

MLD PROJECT # 2017184

PRINTED FOR

DATE 12.19.17

DRAWN BY SLG

Information contained on this drawing and in all digital files produced for above named project may not be reproduced in any manner without express written or verbal consent from authorized project representatives.

SHEET

Irrigation Details

SHEET NUMBER

L-201