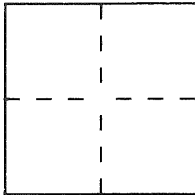


**CORNER RECORD**

Oakland

Document Number CR 1151

City of \_\_\_\_\_

County of Alameda, CaliforniaBrief Legal Description Lot 9 of Amended Map of College Heights (17 M 102)**CORNER TYPE**

Government Corner ☐ Control ☐  
 Meander ☐ Property ☒  
 Rancho ☐ Other ☐  
 Date of Survey 9/16/98

**COORDINATES  
(Optional)**

N. \_\_\_\_\_  
 E. \_\_\_\_\_  
 Zone \_\_\_\_\_ Datum \_\_\_\_\_  
 Elev. \_\_\_\_\_

Corner — Left as found ☒ Found and tagged ☐ Established ☐ Reestablished ☒ Rebuilt ☐

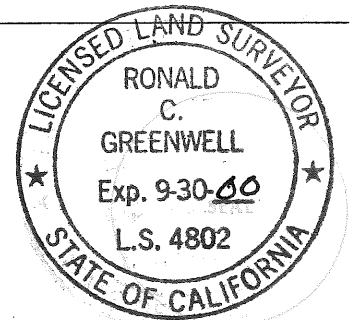
Identification and type of corner found: Evidence used to identify or procedure used to establish or reestablish the corner:  
See sketch on page 2 of 2.

A description of the physical condition of the monument as found and as set or reset: \_\_\_\_\_  
See sketch on page 2 of 2.

**SURVEYOR'S STATEMENT**

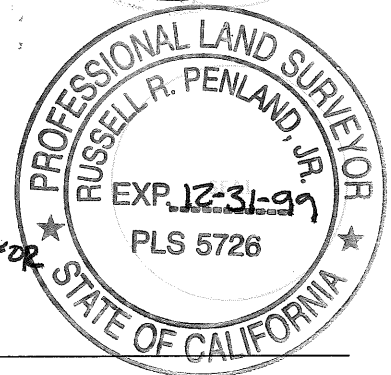
This Corner Record was prepared by me or under my direction in conformance with  
 the Land Surveyors' Act on December 15 1998.

Signed Ronald Greenwell L.S. or R.C.E. Number P.L.S. 4802

**COUNTY SURVEYOR'S STATEMENT**

This Corner Record was received 12-21- 1998 and examined  
 and filed 12-28 1999.

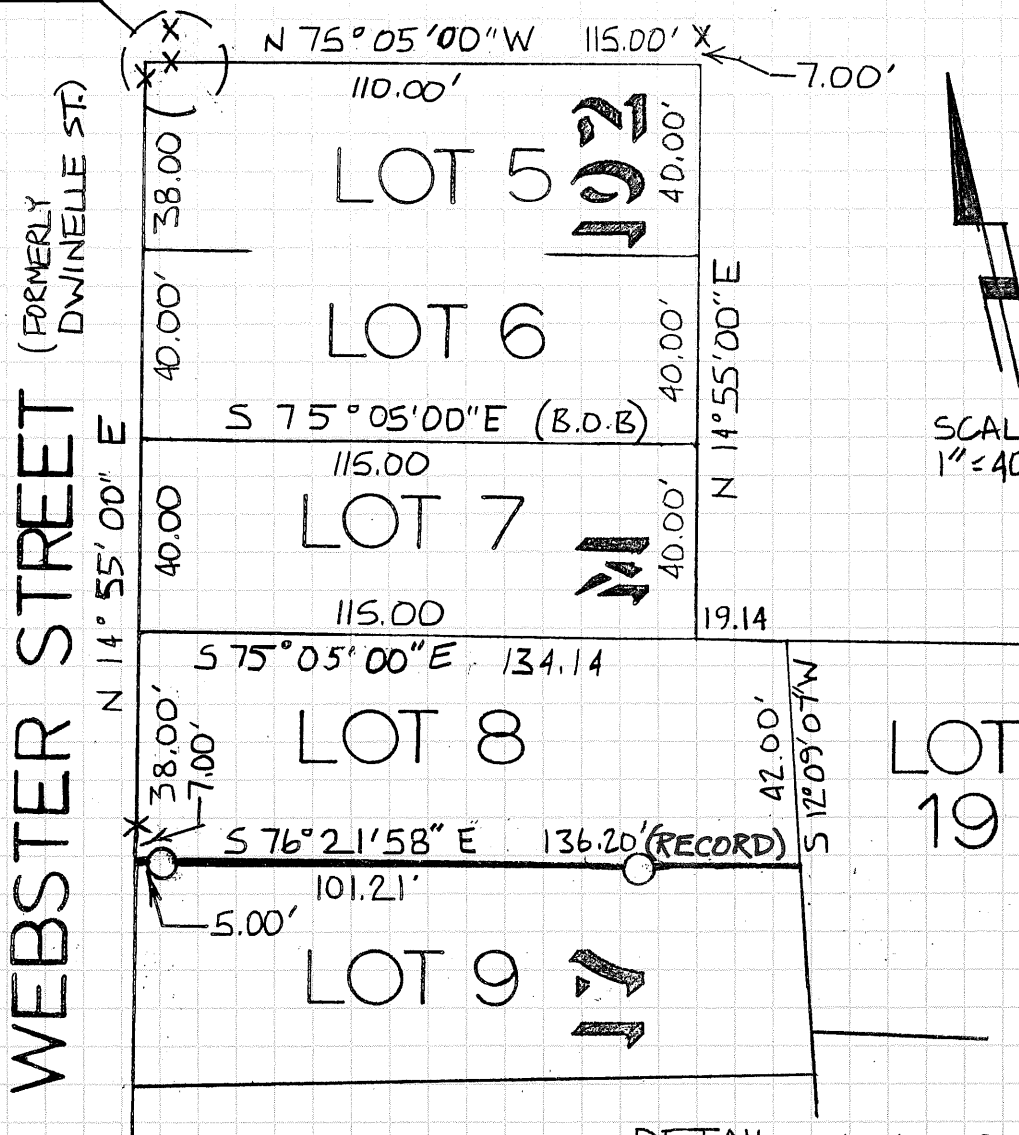
Signed Russell R. Penland, Jr. Title Deputy County Surveyor



County Surveyor's Comment \_\_\_\_\_

# 34th STREET

SEE DETAIL

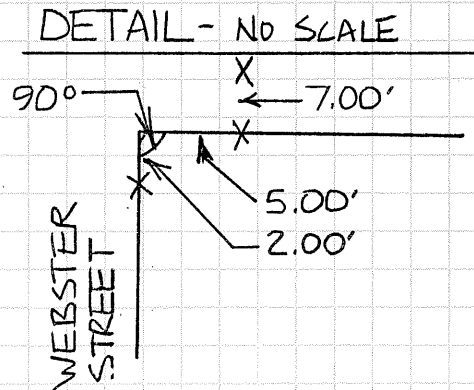


SCALE  
1" = 40'

## LEGEND

X FOUND CUT "X" IN CONCRETE

O SET 5/8" REBAR WITH PLASTIC  
CAP, LS 4802



THE BASIS OF BEARING IS THE NORTHEASTERLY  
LINE OF LOT 7 AS DESCRIBED IN INSTRUMENT NUMBER  
97-049945 AS RECORDED IN ALAMEDA COUNTY.

1151