

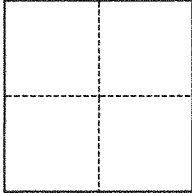
CORNER RECORD

Agency Index

BK 146 PG 21

Document Number

CR 15749

City of HAYWARD County of ALAMEDA, CaliforniaBrief Legal Description MONUMENT AT ~3250 JELINCIC DR**CORNER TYPE****COORDINATES (Optional)**

- ☐ Government Corner ☒ Control
☐ Meander ☐ Property
☐ Rancho ☐ Other

Date of Survey October 26, 2021

N. _____ E. _____

Elevation _____

Units ☐ Metric ☒ U.S. Survey Foot

Horizontal Datum _____

Zone _____ Epoch Date _____

Vertical Datum _____

☐ Complies with Public Resources Code §§8801-8819☐ Complies with Public Resources Code §§8890-8902

PLS Act Ref.:

☐ 8765(d)☒ 8771☐ 8773☐ Other:Corner/
Monument:☒ Left as found☐ Established☐ Rebuilt☒ Pre-Construction☐ Found and tagged☐ Reestablished☒ Referenced☐ Post-Construction

Narrative of corner identified and monument as found, set, reset, replaced, or removed:

☒ See sheet #2 for description(s):**SURVEYOR'S STATEMENT**

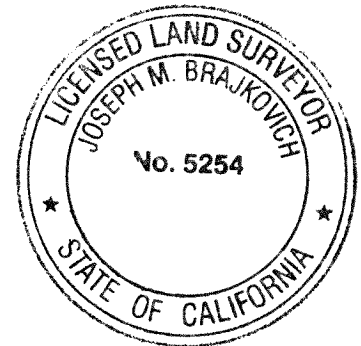
This Corner Record was prepared by me or under my direction in conformance with

the Professional Land Surveyors' Act on

Signed

Joseph M. Brajkovich 12 17 21

P.L.S. or R.C.E. No.

5254**COUNTY SURVEYOR'S STATEMENT**

This Corner Record was received

and examined and filed

FEB 23 2022

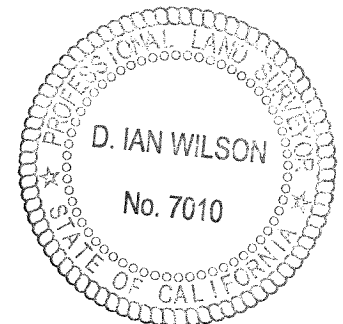
Signed

D. Ian Wilson

P.L.S. or R.C.E. No.

7010Title ALAMEDA COUNTY SURVEYOR

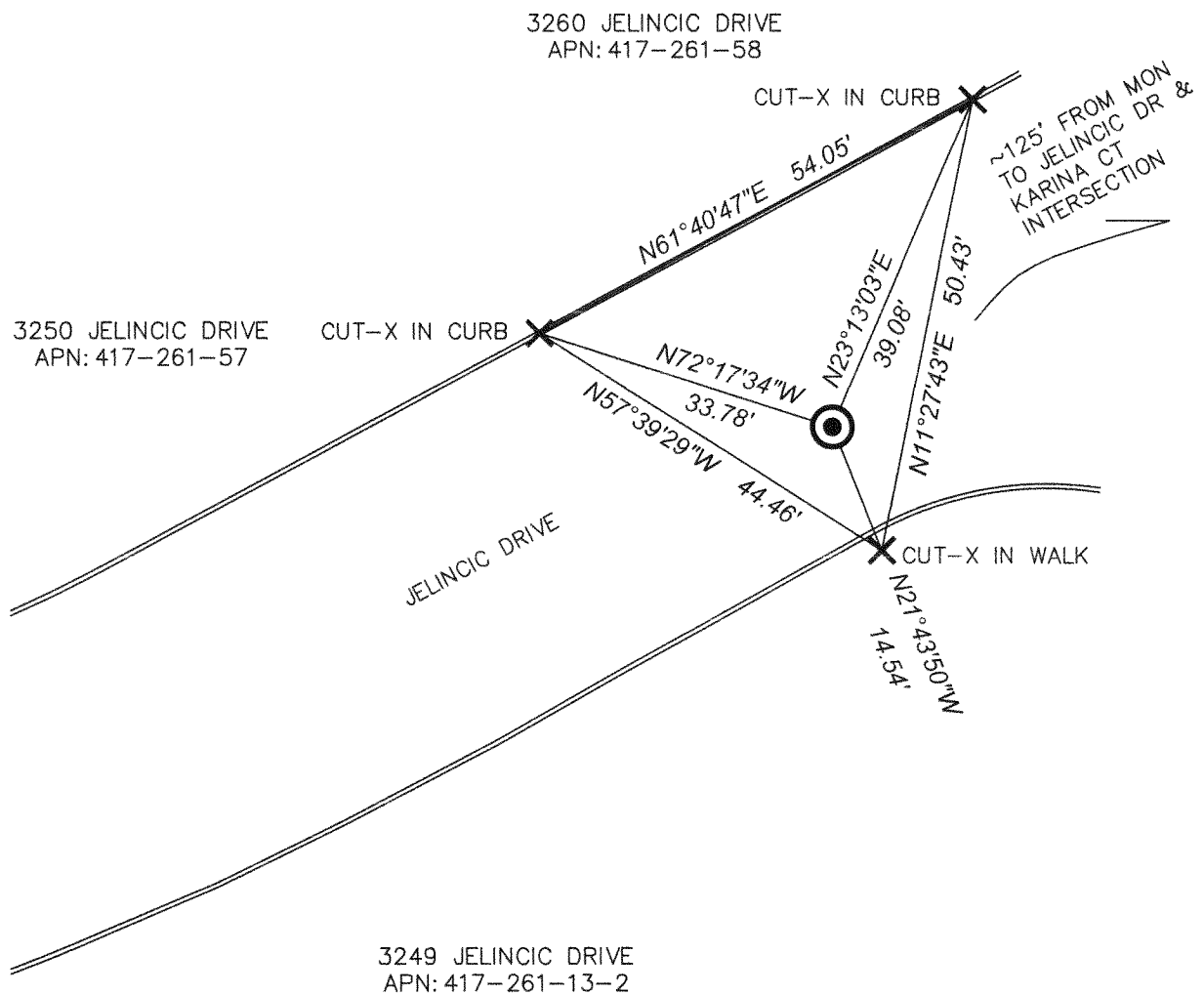
County Surveyor's Comment



LEGEND

#####	STREET ADDRESS
APN	ASSESSOR'S PARCEL NUMBER
⊙	FOUND SURVEY MONUMENT (1/8" PIN IN DISC IN WELL)
×	CUT CROSS SET IN CURB OR WALK AS DISPLAYED

SCALE: 1" = 20'



21-159 SHEET C-20A