

49

RECORDED 11-9-94 FILE NO. 1216734 BOOK 659 MAPS, PAGES 42, 48 & 49

SHEET THREE OF THREE SHEETS

Mackay & Sumps
CIVIL ENGINEER • LAND PLANNING • LAND SURVEYING
SAN JOSE, CA 95128
10.315
9625-2001

NOTE:
LANDS SHOWN HEREON ARE SUBJECT TO AN EASEMENT TO PACIFIC GAS AND ELECTRIC COMPANY FOR INGRESS/EGRESS ALONG A ROUTE TO BE MUTUALLY AGREED UPON, RECORDED IN BOOK 9582 OF OFFICIAL RECORDS AT PAGE 50, SANTA CLARA COUNTY RECORDS.

NOTE:
LANDS SHOWN HEREON ARE SUBJECT TO EASEMENTS, RESERVATIONS AND COVENANTS AS CONTAINED IN THE DOCUMENTS RECORDED IN BOOK M291 OF OFFICIAL RECORDS AT PAGE 1224, AND IN BOOK N260 OF OFFICIAL RECORDS AT PAGE 1529, SANTA CLARA COUNTY RECORDS.

LEGEND & NOTES

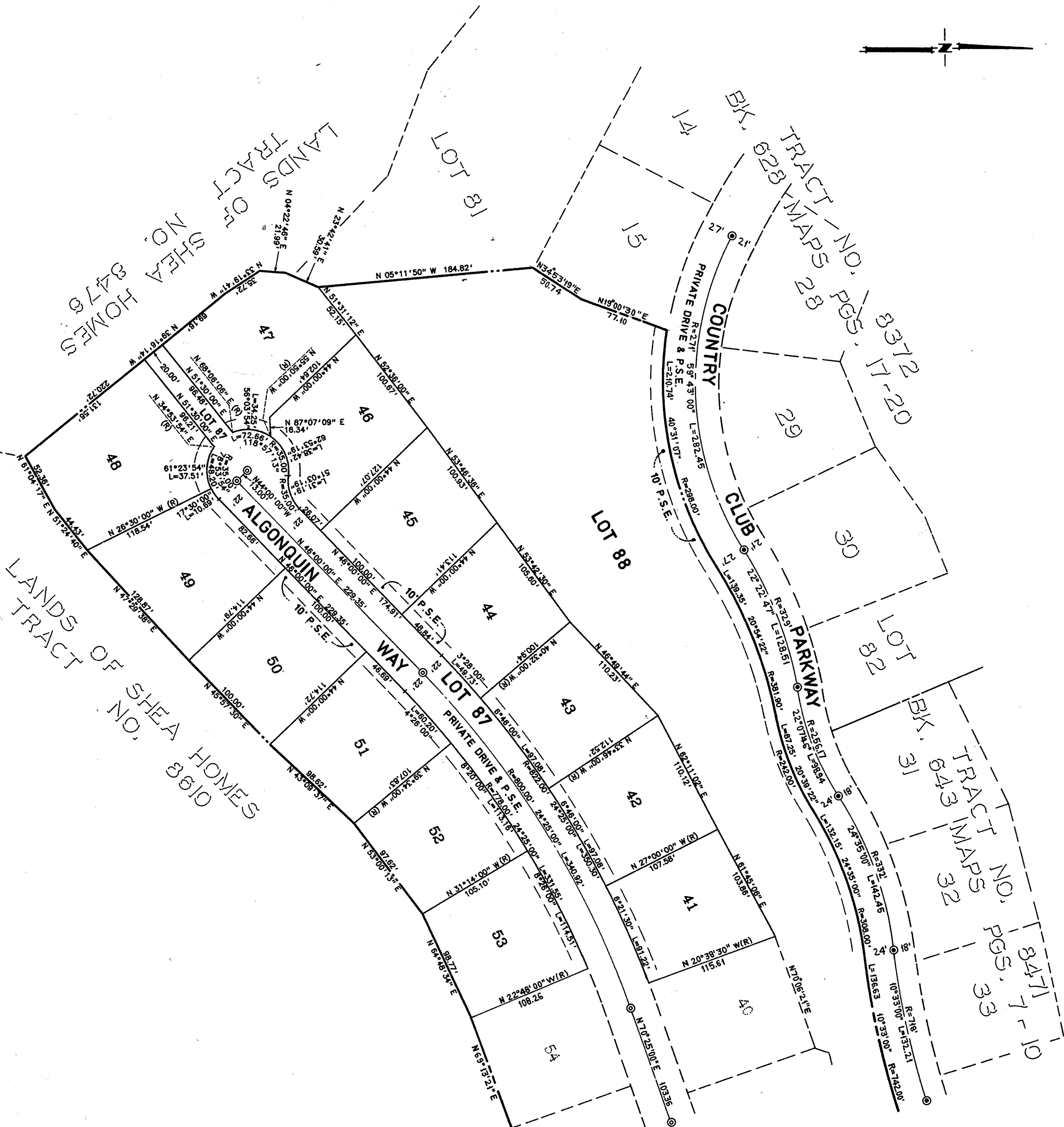
- STANDARD CITY MONUMENT FOUND, UNLESS OTHERWISE NOTED
- STANDARD CITY MONUMENT SET (LLS NO. 3656)
- 3/4" IRON PIPE FOUND, UNLESS OTHERWISE NOTED
- 3/4" IRON PIPE SET, UNLESS OTHERWISE NOTED (LLS NO. 3656)
- △ ANGLE POINT
- DISTINCTIVE BORDER LINE
- P.S.E. PUBLIC SERVICE EASEMENT
- P.L.E. PRIVATE LANDSCAPE EASEMENT

SLASH TO BE CHISELED IN TOP OF CURB OF EACH LOT LINE PRODUCED.
CROSS TO BE CHISELED IN TOP OF CURB OPPOSITE CENTERLINE MONUMENT CURVE POINTS ON A RADIAL LINE.
DISTANCES AND DIMENSIONS ARE GIVEN IN FEET AND DECIMALS THEREOF. THE DISTINCTIVE BORDER LINE INDICATES THE BOUNDARY OF LAND SUBDIVIDED BY THIS MAP.

BASIS OF BEARINGS
THE BEARING N72°08'00"E ALONG THE CENTERLINE OF COUNTRY CLUB PARKWAY AS SHOWN ON TRACT NO. 8471, FILED FOR RECORD IN BOOK 643 OF MAPS AT PAGES 7, 8, 9 AND 10, SANTA CLARA COUNTY RECORDS, AND AS FOUND MONUMENTED, WAS TAKEN AS THE BASIS OF BEARINGS SHOWN HEREON.

TRACT NO. 8473
NEIGHBORHOOD NO. 20 - UNIT 1
CONSISTING OF THREE SHEETS
BEING A RESUBDIVISION OF LOTS 16, 17, 18 AND A PORTION OF LOT 81 OF TRACT NO. 8372, A MAP OF WHICH WAS FILED FOR RECORD IN BOOK 628 OF MAPS AT PAGES 17-20, SANTA CLARA COUNTY RECORDS, AND A PORTION OF THE RANCHO YERBA BUENA Y SOCAYRE AND LYING WITHIN THE CITY OF SAN JOSE, CALIFORNIA
SCALE: 1" = 60'
JULY, 1993

SEE SHEET TWO



49

659
49