

# CORNER RECORD

Agency Index

BK 116 PG 90

Document Number

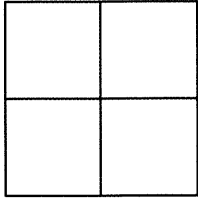
CR 12186

City of EDEN TOWNSHIP

County of

ALAMEDA

, California

Brief Legal Description WELL MONUMENT LOCATED WITHIN BOSTON RD  
IN FRONT OF 18125 BOSTON RD

## CORNER TYPE

Government Corner	<input type="checkbox"/>	Control	<input checked="" type="checkbox"/>
Meander	<input type="checkbox"/>	Property	<input type="checkbox"/>
Rancho	<input type="checkbox"/>	Other	<input type="checkbox"/>

Date of Survey 8/24/18

## COORDINATES (Optional)

N. 2075228 ± E. 6094790 ±

Elevation

Units Metric ☐ U.S. Survey Foot ☐

Horizontal Datum

Zone Epoch Date

Vertical Datum

☐ Complies with Public Resources Code §§8801-8819☐ Complies with Public Resources Code §§8890-8902

PLS Act Ref:

☐ 8765(d)☒ 8771☐ 8773☐ Other:Corner/  
Monument:☒ Left as found☐ Established☐ Rebuilt☐ Pre-Construction☐ Found and tagged☐ Reestablished☐ Referenced☒ Post-Construction

Narrative of corner identified and monument as found, set, reset, replaced, or removed:

☐ See sheet #2 for description(s) : SEE CR 11686

FOUND BRASS DISK WITH NIPPLE IN MONUMENT WELL

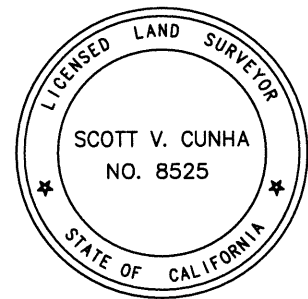
FOUND AND SET POINTS AS SHOWN ON PAGE 2.

THIS POINT WAS FOUND IN GOOD CONDITION AFTER A CONSTRUCTION PROJECT IN THE VICINITY.  
THE TIES SHOWN HEREON ARE FOR THE PURPOSE OF PERPETUATING FOUND MONUMENTATION.  
NO CLAIM IS MADE AS TO THE RELATIONSHIP OF THE POINTS OR LINES SHOWN HEREON TO TRUE  
BOUNDARY LOCATION.

## SURVEYOR'S STATEMENT

This Corner Record was prepared by me or under my direction in conformance with

the Professional Land Surveyors' Act on AUGUST 28, 2018.

Signed SCOTT V. CUNHA P.L.S. or R.C.E. No. LS 8525

## COUNTY SURVEYOR'S STATEMENT

This Corner Record was received 21 SEPTEMBER 2018

and examined and filed 13 DECEMBER 2013.

Signed Michael Rubner P.L.S. or R.C.E. No. 6843

Title COUNTY SURVEYOR

County Surveyor's Comment

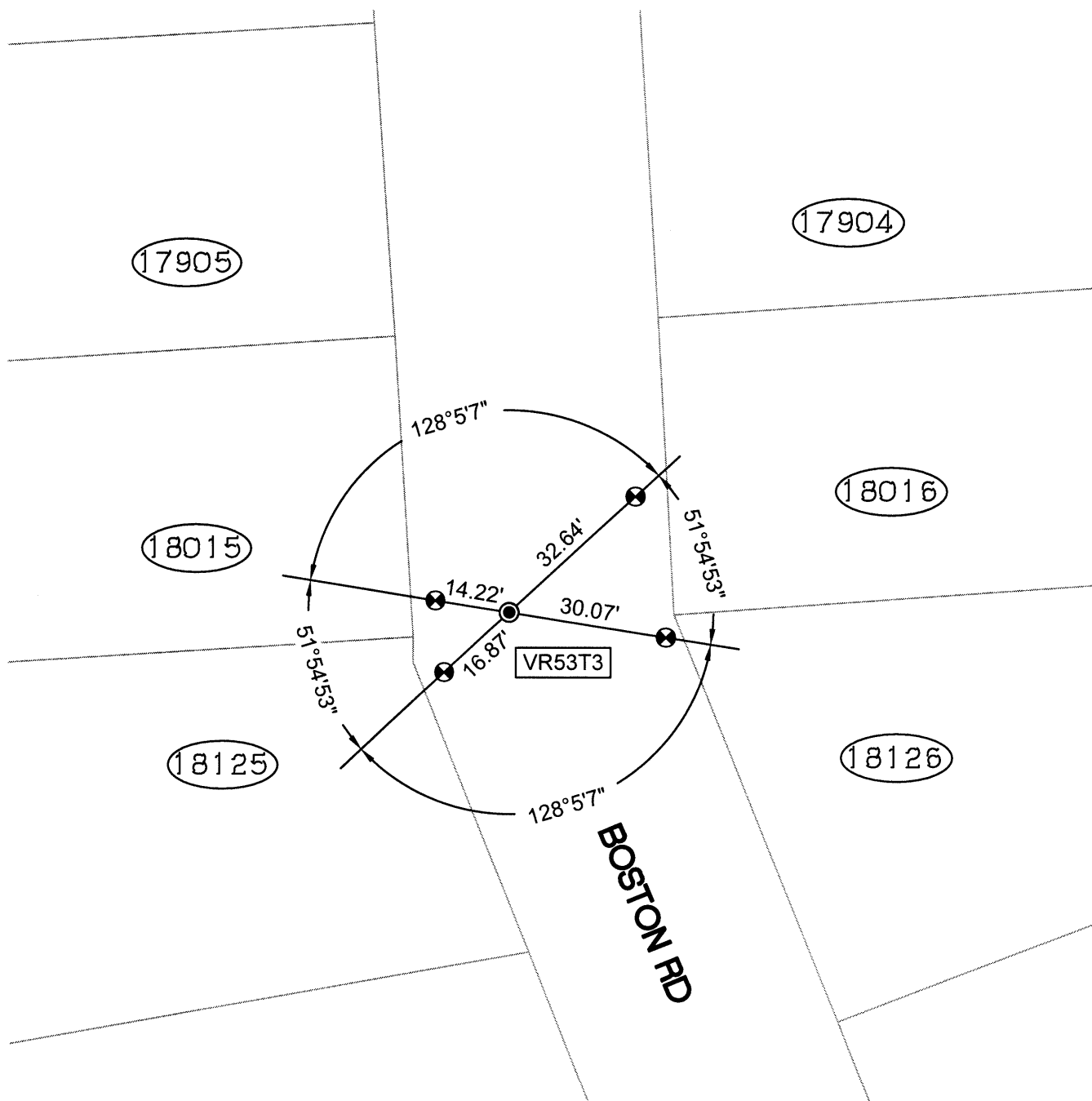


SPEC-2356-POST

SCALE: 1"=30'

# LEGEND

- FOUND BRASS DISC WITH NIPPLE IN MONUMENT WELL
- ⊗ FOUND CUT CROSS IN WALK
- AA### ALAMEDA COUNTY MONUMENT ID
- (19592) REFERENCE STREET ADDRESS



218070-Hampton POST-CR-3