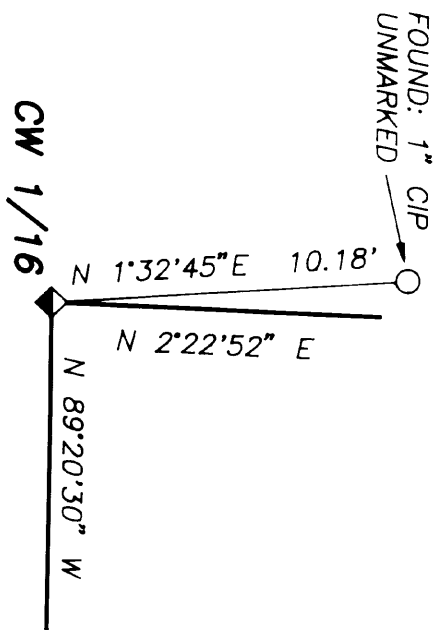


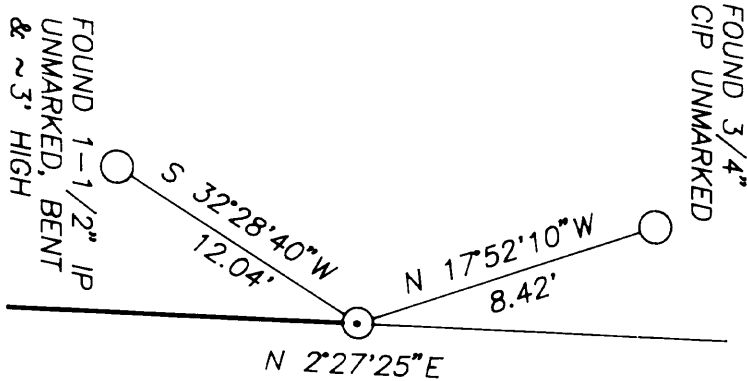
21-69A

DETAILS

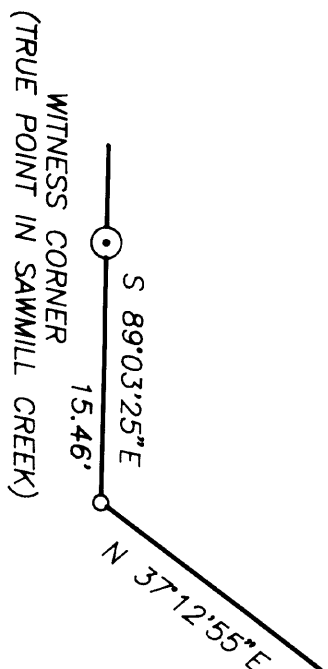
NOT TO SCALE



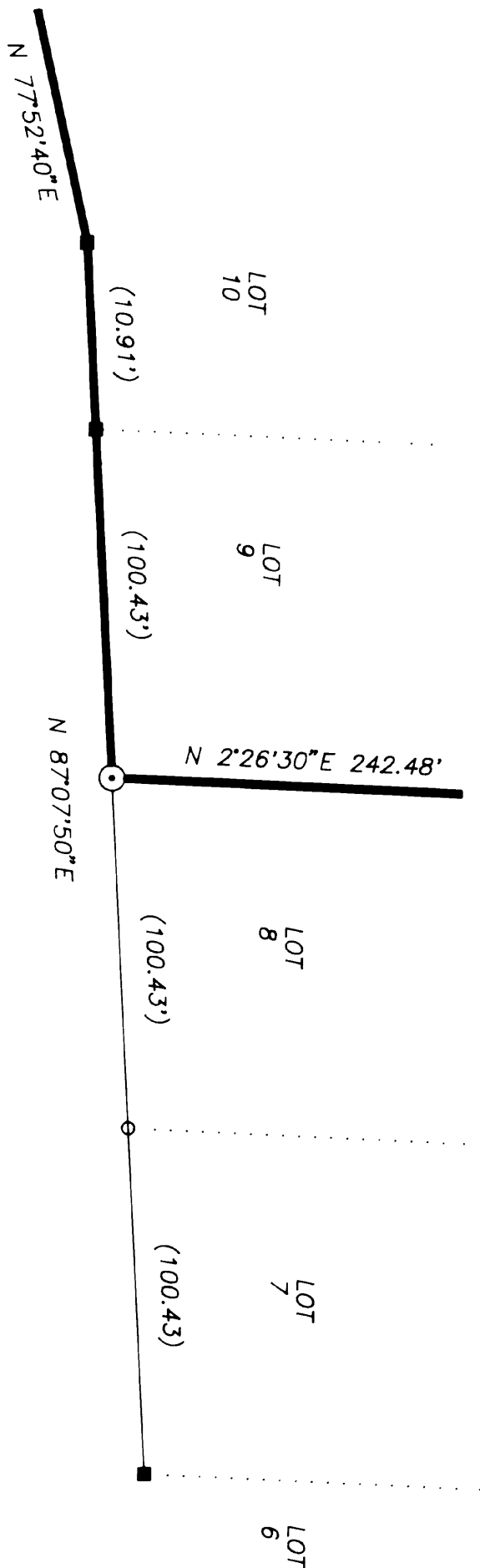
DETAIL ①



DETAIL ③



DETAIL ⑪

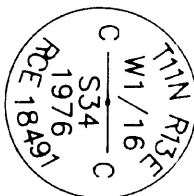


DETAIL ⑧ ⑨ ⑩

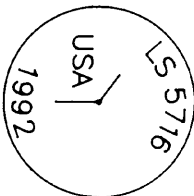
MONUMENT NOTES

21-69A

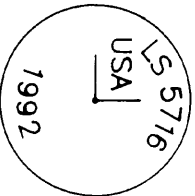
① Found 1 1/2" C.I.P. in stone mound.
B.T.'s:
9" Fir, S 67° W, 22.3' (New)
Scribed: CW1/16S34BT
14" Fir, S 42° W, 19.9' (Existing)
Healed Face



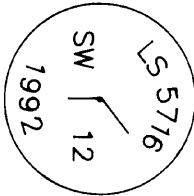
③ Set 3/4" C.I.P. in ground.
B.T.'s:
18" Cedar, S 73° W, 41.5' (New)
Scribed: PCBT
17" Cedar, S 18° W, 46.4' (New)
Scribed: PCBT



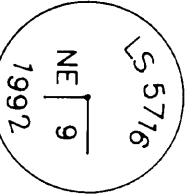
④ Set 3/4" C.I.P. in ground.
No B.T.'s. Establish line point:
Set rebar with plastic cap
At 74.3', N 2°27'25"E
Found Highway Marker 17.5', S 72°17'22"E



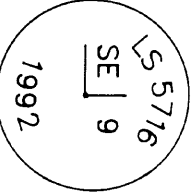
⑤ Set 3/4" C.I.P. in ground.
No B.T.'s. Establish line points:
Set rebar with plastic cap
At 40.4', S 2°27'25"W
At 108.5', N 7°52'40"E



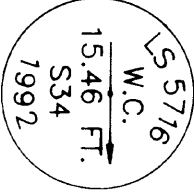
⑦ Set 3/4" C.I.P. in ground.
B.T.'s:
14" Fir, West, 58.5' (New)
Scribed: PCBT
15" Pine, N 7° E, 58.5' (New)
Scribed: PCBT



⑨ Set 3/4" C.I.P. in ground.
No B.T.'s.



⑪ Set 3/4" C.I.P. for Witness Corner
(True point falls in Sawmill Creek)
B.T.'s:
11" Fir, N 20° E, 8.9' (New)
Scribed: WCBT
13" Fir, N 70° W, 24.8' (New)
Scribed: WCBT
Establish line point:
Set rebar with plastic cap
At 123.4', N 89°03'25" W



Found 3/4" I.P. on line .04' westerly
of Witness corner.

⑫ Set 3/4" C.I.P. in ground.
B.T.'s:
17" Cedar, N 27° W, 10.9' (New)
Scribed: PCBT
9" Cedar, N 32° E, 21.4" (New)
Scribed: PCBT



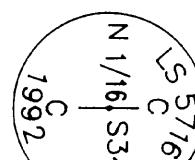
⑬ Found Standard G.L.O. Brass Cap.
B.T.'s:
9" Fir, N 46° W, 23.7' (New)
Scribed: 1/4S27BT
36" Fir (snag), N 4° W, 22.0' (Existing)
Healed Face
22" Black Oak, S 55° E, 54.4' (Existing)
Healed face



⑭ Set 3/4" C.I.P. in ground.
B.T.'s:
15" Douglas Fir, N 20° W, 36.9' (New)
Scribed: RW1BT (New)
5" Black Oak, N 60° W, 22.0' (New)
Scribed: X at DBH and BT at base
Establish line points:
Set rebar with plastic cap
At 34.8', N 2°00'10" E
At 111.6', N 82°35'12" W



⑮ Set 3/4" C.I.P. in ground off southerly
edge of paved road.
No B.T.'s.



⑯ Found 1" C.I.P. in stone mound.
B.T.'s:
16" Douglas Fir, S 58° E, 37.7' (New)
Scribed: C1/4S34BT
21" Douglas Fir, S 80° W, 36.2' (New)
Scribed: C1/4S34BT



21-69A

21-69A