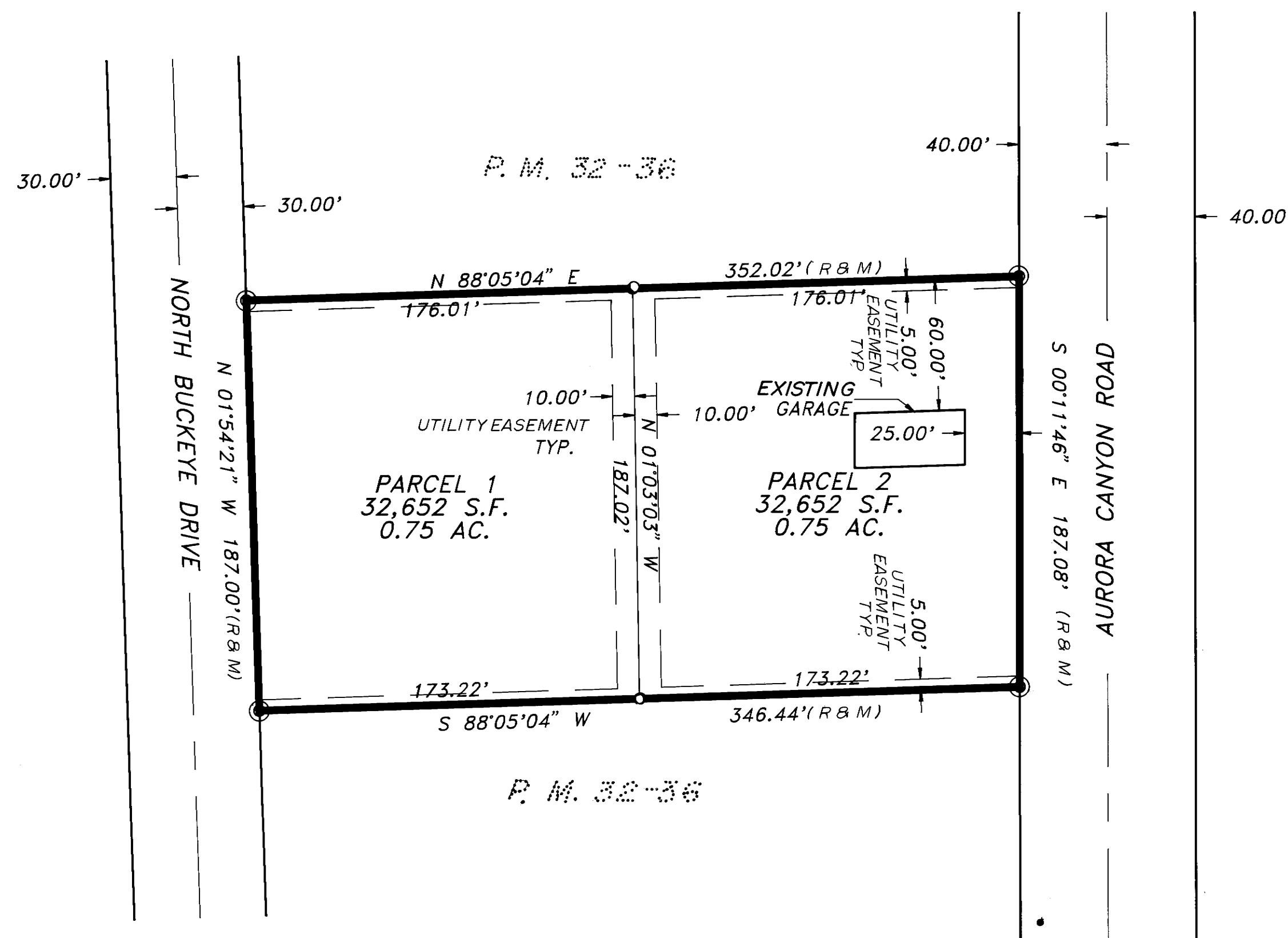


# PARCEL MAP NO. 32-44

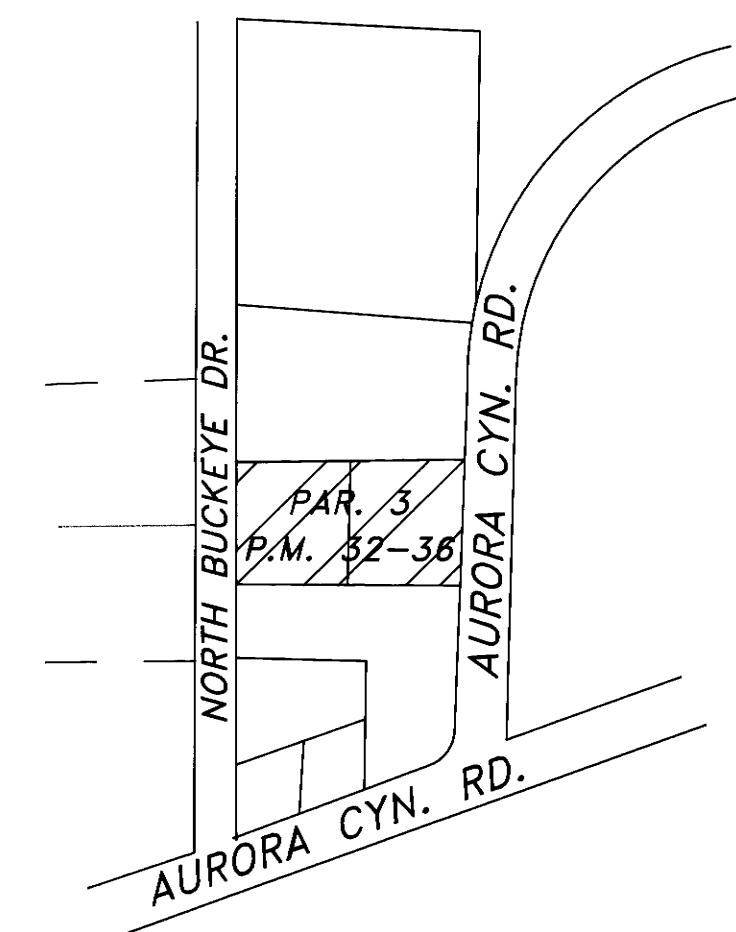
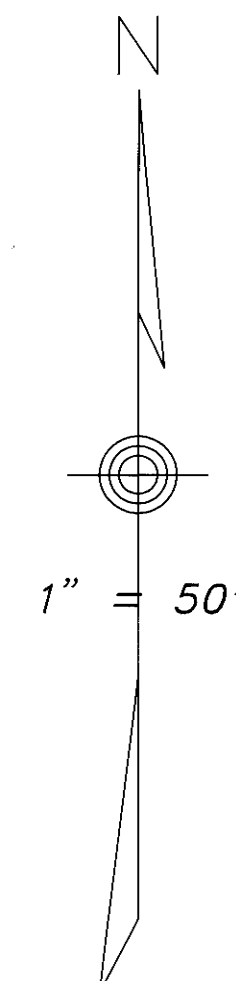
SHEET 2 OF 2

A DIVISION OF PARCEL NO. 3 OF PARCEL MAP 32-36  
 A PORTION OF THE E1/2 W1/2 SE1/4, SECTION 28, T.5N., R.25E., M.D.B.&M.  
 IN THE UNINCORPORATED TERRITORY OF MONO COUNTY



## LEGEND

- FOUND 5/8" REBAR AND CAP RCE 30029 PER P.M. 32-36
- UTILITY EASEMENT
- SET 5/8" REBAR AND CAP RCE 30029
- R RECORD PER P.M. 32-36, P.M.B. 36, 36A



VICINITY MAP  
 N.T.S.

BASIS OF BEARING - NORTH LINE OF PARCEL 3,  
 PARCEL MAP 32-36 = N 88° 05' 04" E