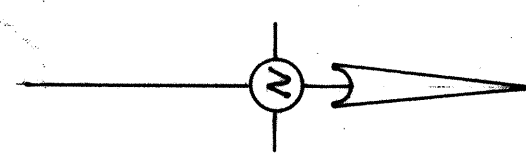


94/44



11- 5263

11- 5263

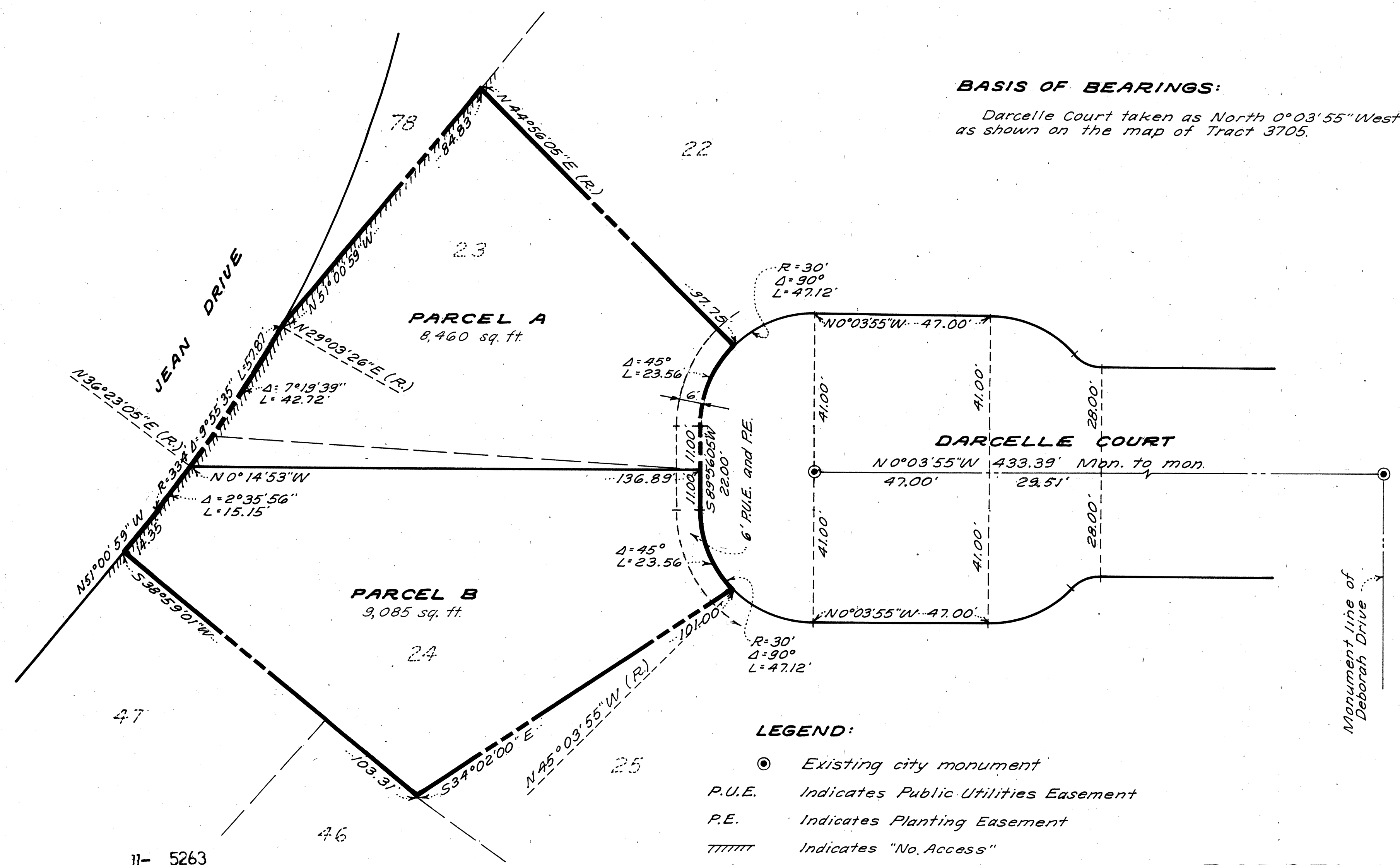
PARCEL MAP NO. 2097
CITY OF UNION CITY
ALAMEDA COUNTY, CALIFORNIA
BEING A DIVISION OF LOTS 23 AND 24, TRACT 3705,
RECORDED JUNE 3, 1976, BOOK 92 OF MAPS, PAGES 32 THROUGH 36
OFFICIAL RECORDS OF ALAMEDA COUNTY

BISSELL & KARN, INC.
CIVIL ENGINEERS
NOVEMBER, 1976
SAN LEANDRO, CALIFORNIA
SCALE: 1"=20'

11- 5263

BASIS OF BEARINGS:

Darcelle Court taken as North 0°03'55" West
as shown on the map of Tract 3705.



11- 5263

11- 5263

11-5263

PARCEL MAP NO. 2097
Sheet 2 of 2 sheets

94/44
JOB NO. 6115