
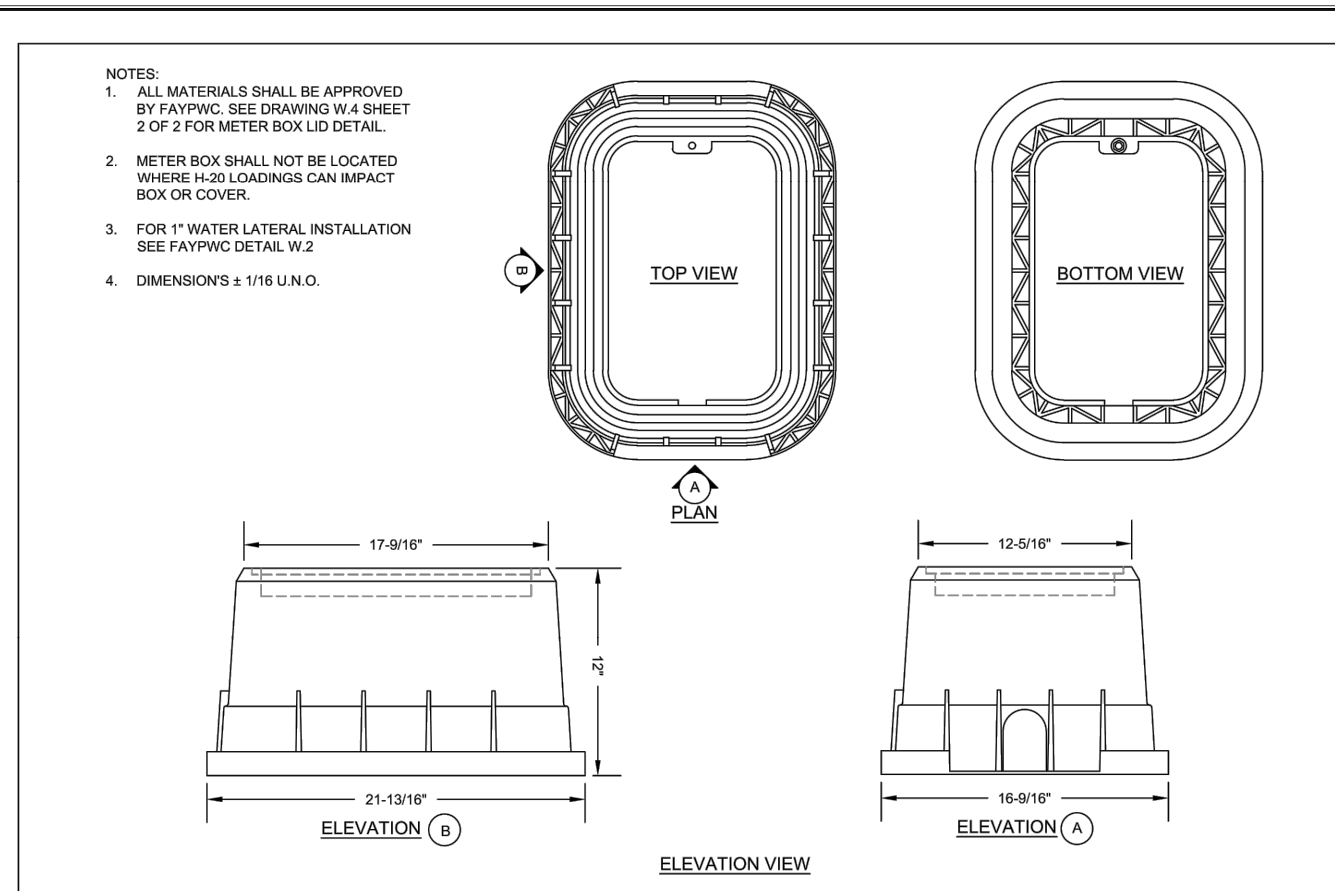

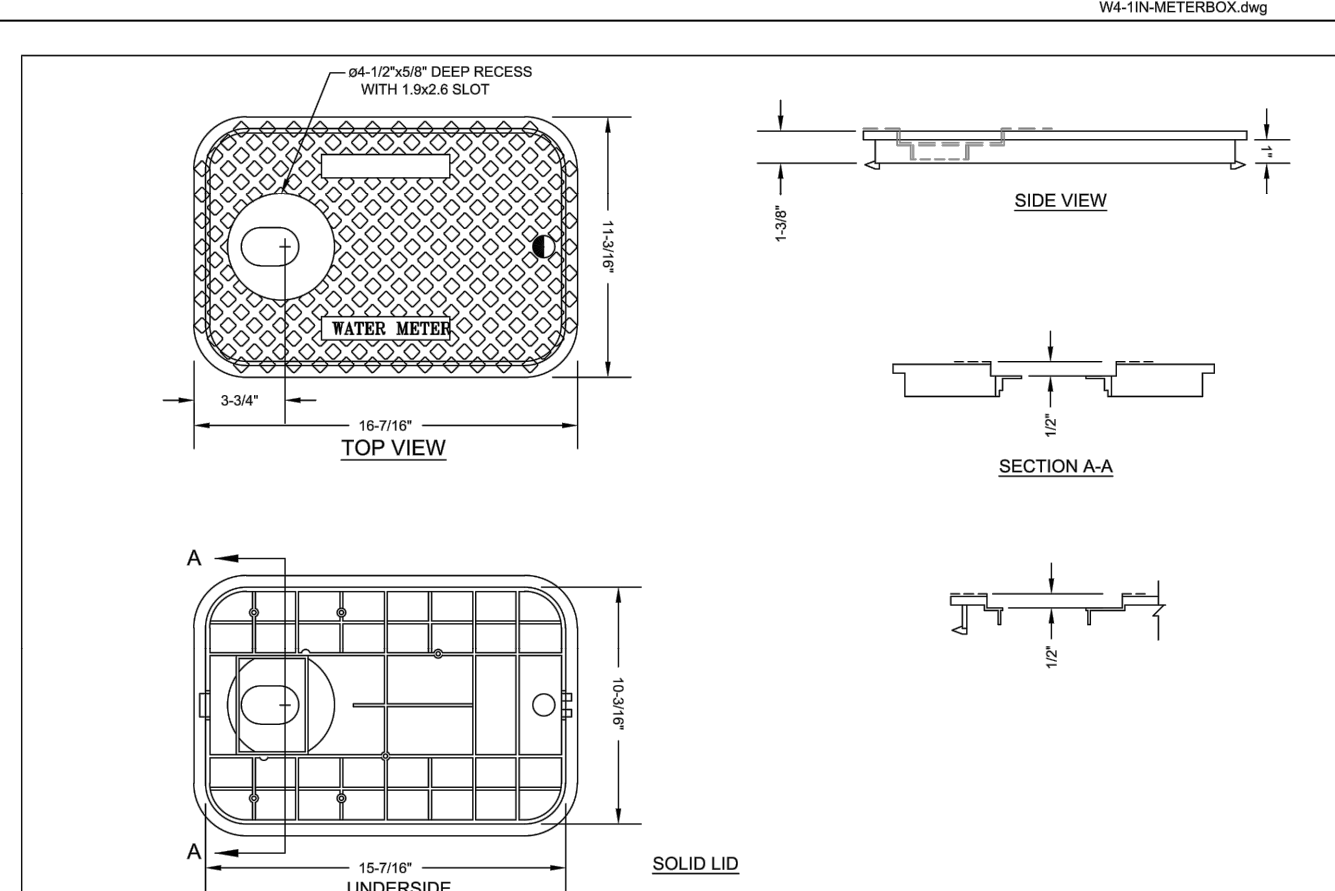



VALVE BOX N.T.S.			FAYETTEVILLE PUBLIC WORKS COMMISSION FAYETTEVILLE, N.C.			NO.	DATE	REVISION
SHEET NO. 1 OF 1	DWG. NO.	W.7	DWG. BY:	FAYPWC		1	0709	ADDED NOTES 7, 8, AND CLARIFIED NOTES
	DATE:	JULY 01, 2020	APPROVED BY:	J.E.G.	2	0114	REVISED NOTES 1, 4, 6	

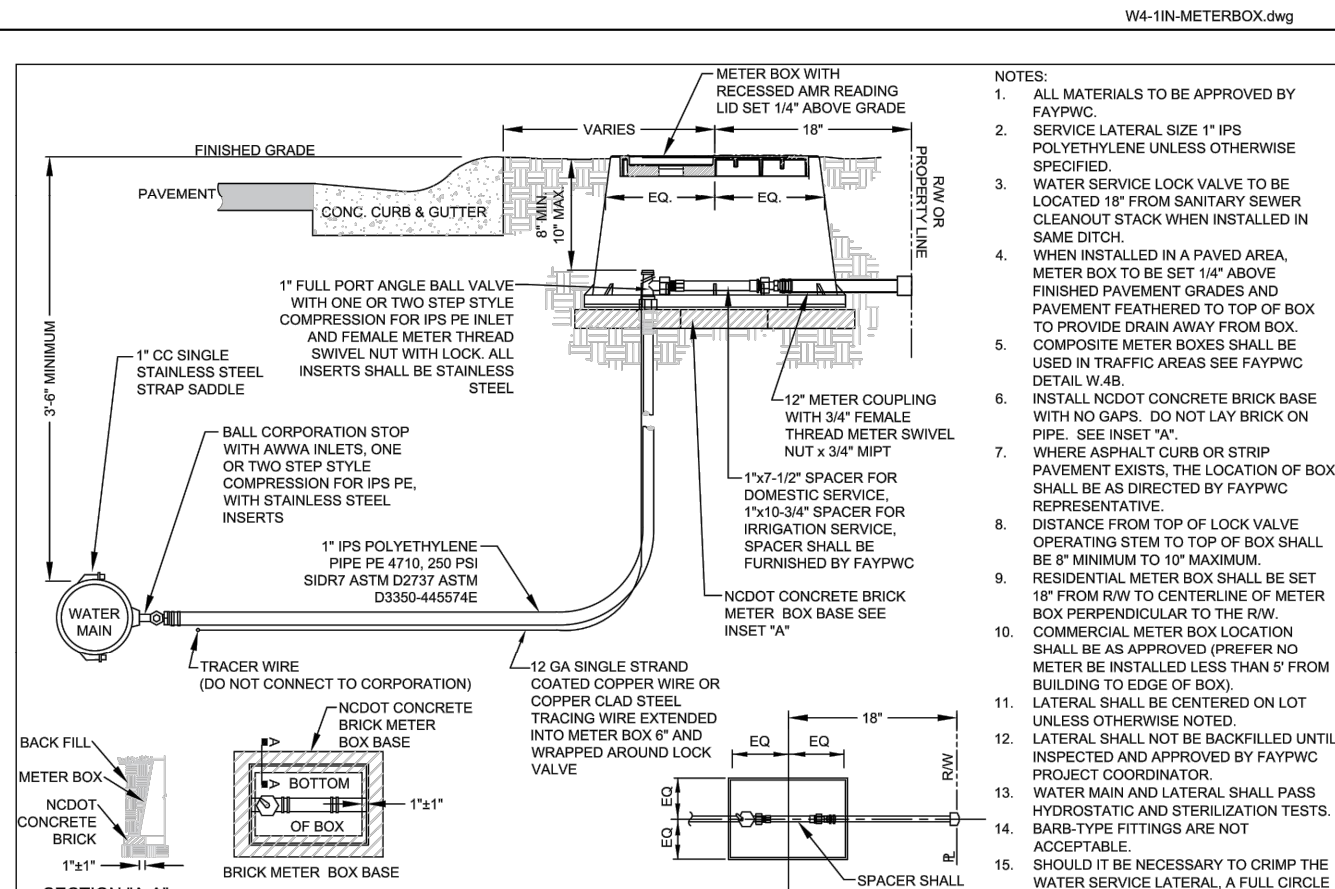
W7-VALVEBOX.dwg




1-INCH METER BOX DETAILS N.T.S.			FAYETTEVILLE PUBLIC WORKS COMMISSION FAYETTEVILLE, N.C.			NO.	DATE	REVISION
SHEET NO. <b>W.4</b> DWG. NO. <b>W.4</b> DATE: JAN. 01, 2021			WATER RESOURCES ENGINEERING DEPARTMENT			1	03/10	CHANGED BOX DIMENSIONS



1-INCH METER BOX LID			FAYETTEVILLE PUBLIC WORKS COMMISSION FAYETTEVILLE, N.C.	NO.	DATE	REVISION
N.T.S.				1	07/07	REVISED LID
SHEET NO. 2 OF 2	DWG. NO. <b>W.4</b>	DWG. BY: FAYPWC		1	03/10	CHANGED BOX AND LID DIMENSIONS
	DATE: JAN. 01, 2021	APPROVED BY: J.E.G.		2	01/15	REVISED LID
			WATER RESOURCES ENGINEERING DEPARTMENT			



SECTION "A-A"		INSET "A"		PLAN		BE CENTERED IN METER BOX		REPAIR CLAMP SHALL BE PLACED ON THE CRIMPED AREA.	
1" WATER SERVICE LATERAL N.T.S.				FAYETTEVILLE PUBLIC WORKS COMMISSION FAYETTEVILLE, N.C.			NO.	DATE	REVISION
SHEET NO. 1 OF 1	DWG. NO.	W.2	DWG. BY: FAY/PWC	WATER RESOURCES ENGINEERING DEPARTMENT			1	07/06	RESIZED METER COUPLING
	DATE: JAN. 01, 2021	APPROVED BY: J.E.G.	2				07/13	REVISED NOTE RE: TRACER WIRE	
			3				07/17	REVISED NOTES	

---