



**BASIS OF BEARINGS**

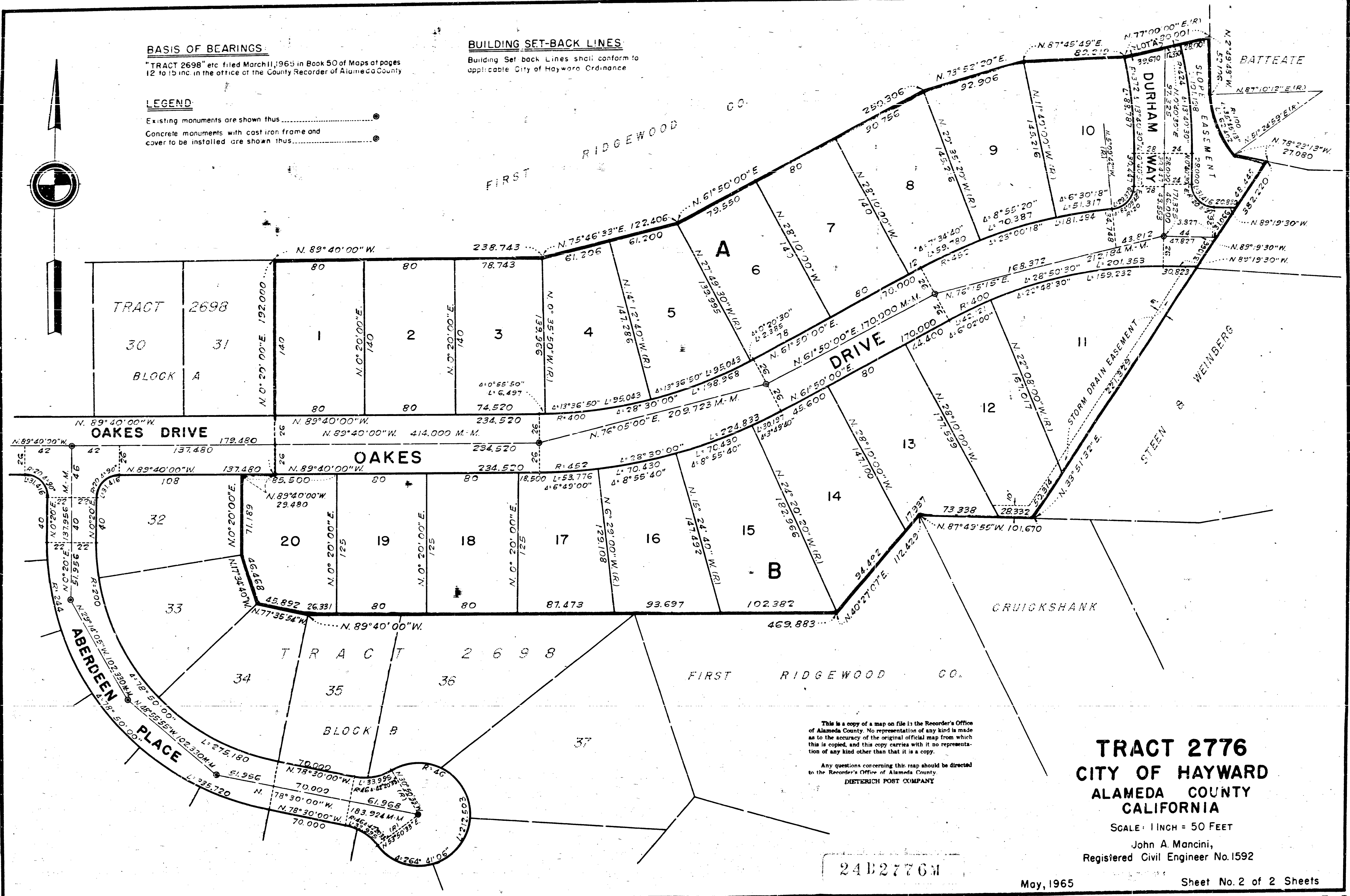
"TRACT 2698" etc. filed March 11, 1965 in Book 50 of Maps at pages 12 to 15 inc. in the office of the County Recorder of Alameda County

**LEGEND**

Existing monuments are shown thus   
Concrete monuments with cast iron frame and cover to be installed are shown thus 

**BUILDING SET-BACK LINES**

Building Set back Lines shall conform to applicable City of Hayward Ordinance



This is a copy of a map on file in the Recorder's Office of Alameda County. No representation of any kind is made as to the accuracy of the original official map from which this is copied, and this copy carries with it no representation of any kind other than that it is a copy.

Any questions concerning this map should be directed to the Recorder's Office of Alameda County.  
DIETRICH POST COMPANY

**TRACT 2776  
CITY OF HAYWARD  
ALAMEDA COUNTY  
CALIFORNIA**

SCALE: 1 INCH = 50 FEET

John A. Mancini,  
Registered Civil Engineer No. 1592

24B2776M

May, 1965

Sheet No. 2 of 2 Sheets

AX149084 FILED OCT. 28, 1965 BOOK 50 PAGE 5