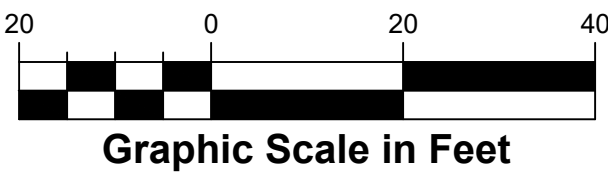
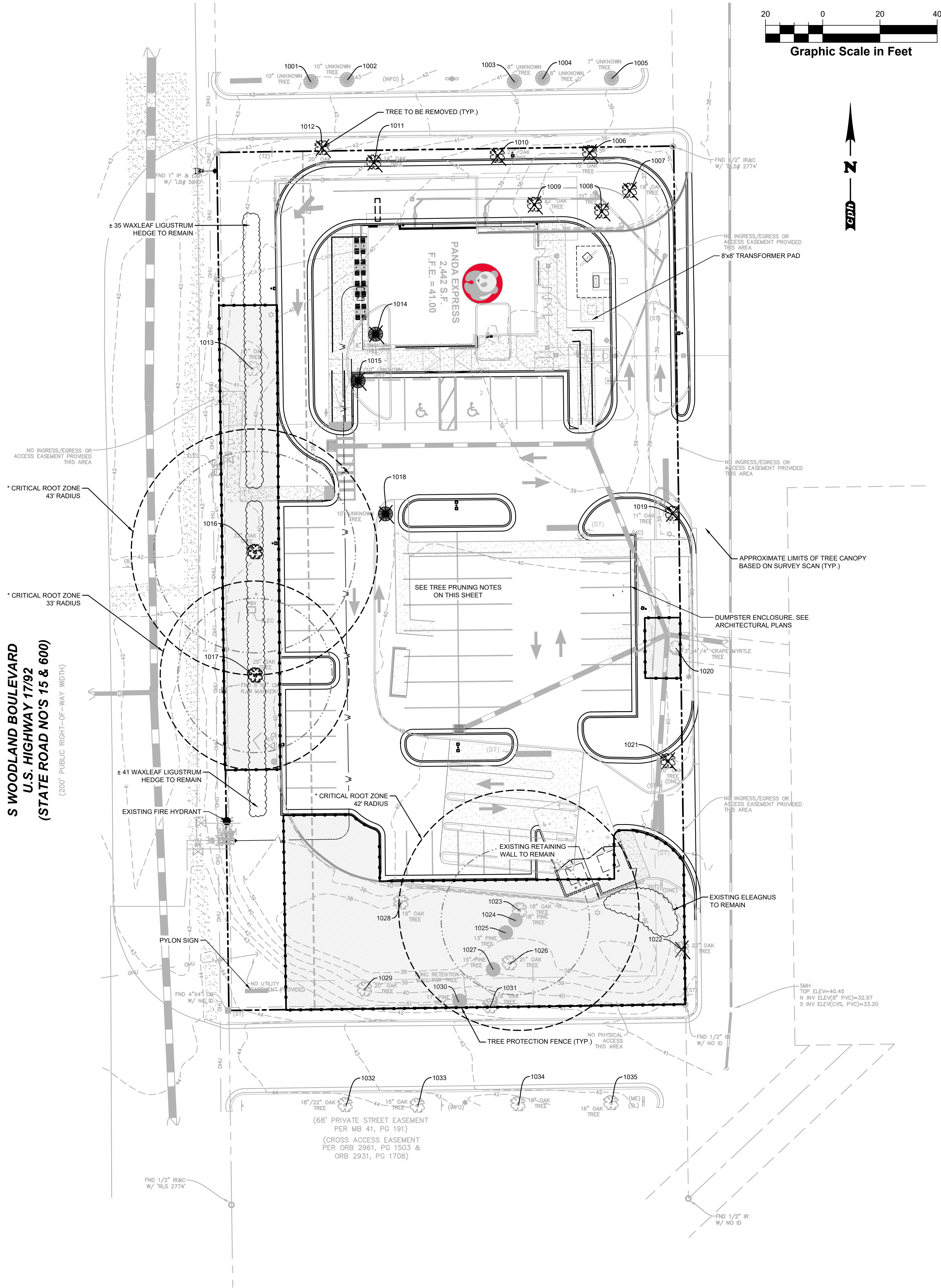


S WOODLAND BOULEVARD  
U.S. HIGHWAY 17/92  
(STATE ROAD NO'S 15 & 600)  
(200' PUBLIC RIGHT-OF-WAY WIDTH)



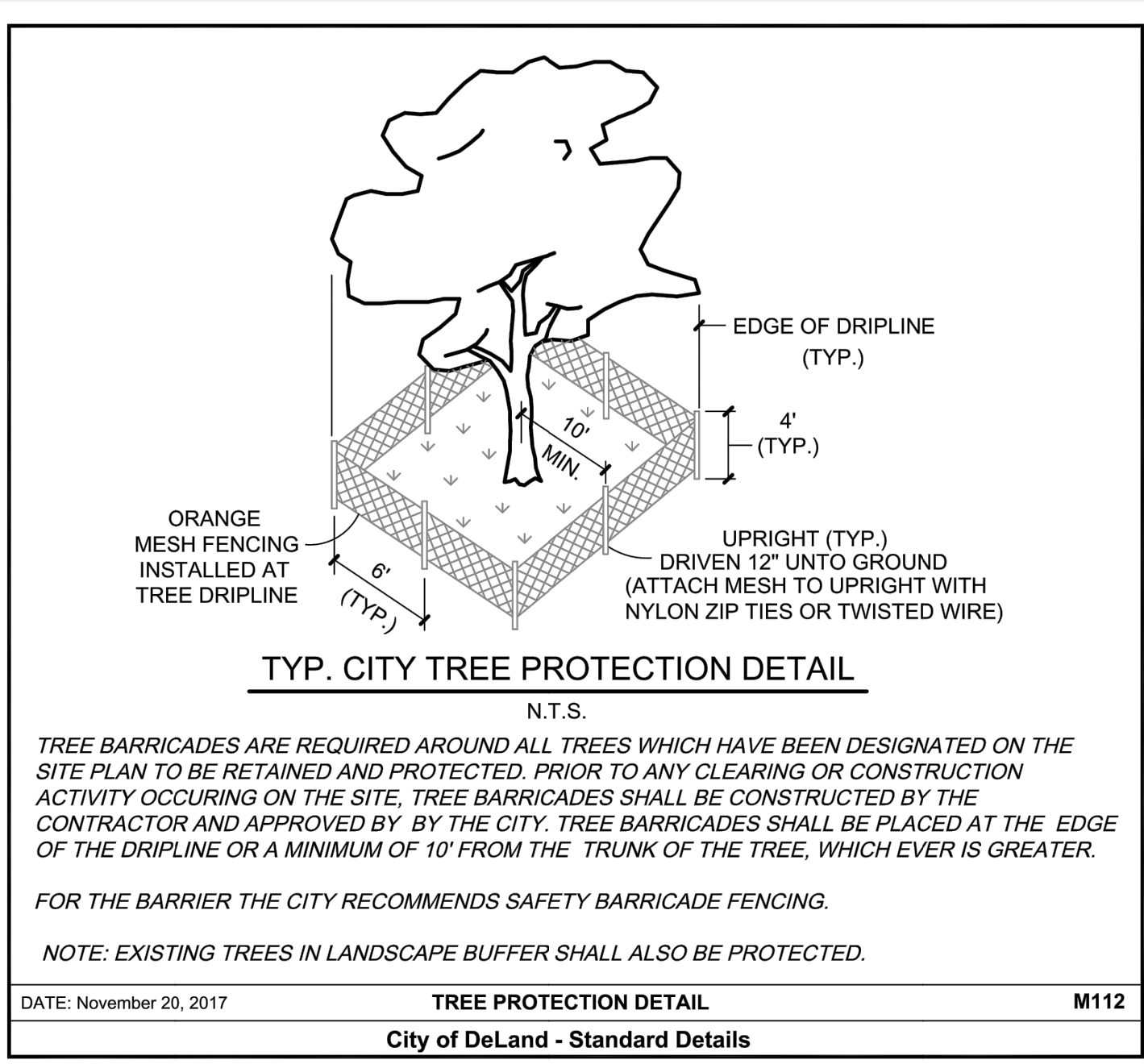
**33-57.07(b) TREE PROTECTION AREA CALCULATIONS**  
REQUIRED: 15%  
SITE AREA: 47,916 SF (1.1AC) X 15% = 7,187.4 SF  
REQUIRED: 7,187  
PROVIDED: 9,445

**TREE LEGEND**  
X = TREE TO BE REMOVED  
[Symbol] = TREE TO BE SAVED  
[Symbol] = TREE CRITICAL ROOT ZONE  
[Symbol] = TREE PROTECTION AREA

Tree No.	Description	DBH	Removed	Remain	Condition	Replacement DBH	Replacement Type
1001	Crape Myrtle	10"	-	Yes	Off-Site	33.3%	N/A
1002	Crape Myrtle	10"	-	Yes	Off-Site	33.3%	N/A
1003	Crape Myrtle	8"	-	Yes	Off-Site	33.3%	N/A
1004	Crape Myrtle	8"	-	Yes	Off-Site	33.3%	N/A
1005	Crape Myrtle	7"	-	Yes	Off-Site	33.3%	N/A
1006	Laurel Oak	15"	Yes	-	Good	33.3% - 5 DBH	Crape Myrtle
1007	Laurel Oak	19"	Yes	-	Good	33.3% - 6.3 DBH	Winged Elm
1008	Laurel Oak	21"	Yes	-	Good	33.3% - 7 DBH	Winged Elm
1009	Laurel Oak	22"	Yes	-	Good	33.3% - 7.3 DBH	Live Oak
1010	Laurel Oak	23"	Yes	-	Good	33.3% - 7.7 DBH	Live Oak
1011	Laurel Oak	14"	Yes	-	Good	33.3% - 4.7 DBH	Crape Myrtle
1012	Laurel Oak	20"	Yes	-	Poor	2" DBH	Chaste Tree
1013	Live Oak	11"	-	Yes	Good	N/A	N/A
1014	Holly	8"	Yes	-	Poor	33.3% - 2.7 DBH	Sabal Palms/Chaste
1015	Holly	6'10"	Yes	-	Poor	33.3% - 5.3 DBH	Winged Elm
1016	Live Oak	32"	-	Yes	Historic	N/A	N/A
1017	Live Oak	25"	-	Yes	Historic	N/A	N/A
1018	Holly	10"	Yes	-	Poor	33.3% - 3.3 DBH	Sabal Palms
1019	Holly	11"	Yes	-	Poor	33.3% - 3.7 DBH	Crape Myrtle
1020	Crape Myrtle	3'1/4"4"	-	Yes	Good	33.3%	N/A
1021	Holly	10"	Yes	-	Poor	33.3% - 3.3 DBH	Crape Myrtle
1022	Laurel Oak	23"	Yes	-	Poor	2" DBH	Chaste Tree
1023	Laurel Oak	18"	-	Yes	Good	33.3%	N/A
1024	Longleaf Pine	18"	-	Yes	Good	N/A	N/A
1025	Longleaf Pine	13"	-	Yes	Good	33.3%	N/A
1026	Laurel Oak	21"	-	Yes	Good	33.3%	N/A
1027	Longleaf Pine	15"	-	Yes	Good	33.3%	N/A
1028	Laurel Oak	19"	-	Yes	Good	33.3%	N/A
1029	Laurel Oak	20"	-	Yes	Good	33.3%	N/A
1030	Longleaf Pine	17"	-	Yes	Fair	33.3%	N/A
1031	Laurel Oak	18"	-	Yes	Fair	33.3%	N/A
1032	Live Oak	18"22"	-	Yes	Off-Site	N/A	N/A
1033	Live Oak	15"	-	Yes	Off-Site	33.3%	N/A
1034	Laurel Oak	16"	-	Yes	Off-Site	33.3%	N/A
1035	Laurel Oak	16"	-	Yes	Off-Site	33.3%	N/A

TOTAL REPLACEMENT DBH : 60.3 DBH  
ALLOWED PALMS : 15.1 DBH (60.3x .25)  
TOTAL PROPOSED TREES / PALMS = 148.5"

**TREE PRUNING NOTES**  
NOTES & SPECIFICATIONS FOR TREES TO BE ROOT PRUNED  
**TREE PRUNING**  
1. THE LANDSCAPE CONTRACTOR SHALL PRUNE EXISTING TREES TO REMAIN TO RAISE THE CANOPY FOR VERTICAL CLEARANCE WHERE NECESSARY. CORRECT STRUCTURAL DEFICIENCIES AND REMOVE DEAD LIMBS 2 INCHES OR GREATER IN DIAMETER.  
2. NO MORE THAN 25% OF ANY TREE'S CANOPY VOLUME SHALL BE REMOVED.  
3. ALL PRUNING SHALL BE IN ACCORDANCE WITH ANSI A300 STANDARDS FOR TREE CARE, PART 8 (PRUNING) AND SHALL BE COMPLETED UNDER DIRECT SUPERVISION OF AN ISA- OR ASCA-CERTIFIED ARBORIST.  
4. THE CONTRACTOR OR SUPERVISING ARBORIST MUST OBTAIN APPROVAL FROM THE OWNER PRIOR TO COMMENCEMENT OF PRUNING ACTIVITIES. TWO WEEKS ADVANCE NOTIFICATION IS REQUIRED.  
**TREE ROOT PRUNING**  
1. BROADLEAF TREES SHALL BE ROOT PRUNED 4 MONTHS PRIOR TO CONSTRUCTION.  
2. ROOT PRUNING SHALL BE PERFORMED IN ACCORDANCE WITH ANSI A300 PART 8, (ROOT MANAGEMENT) SUBPART 84.5 NON-SELECTIVE ROOT CUTTING.  
3. AT A MINIMUM, ROOTS SHALL BE PRUNED TEN (10) INCHES AWAY FROM THE TRUNK FOR EVERY ONE (1) INCH OF TRUNK DIAMETER.  
4. ROOTS ARE TO BE PRUNED USING CLEAN, SHARP ROOT PRUNING TOOLS SUCH AS A POWER GROUND SAW, LOPPERS OR HAND SAW. MAKE CLEAN CUTS, RAKING OR TEARING THE ROOTS IS NOT PERMITTED.  
5. AFTER ROOT PRUNING, THE TRENCH SHALL BE LIGHTLY BACKFILLED WITH MULCH.  
  
\* CRITICAL ROOT ZONE = 1.5 X THE AREA OF THE TREE CANOPY FOR HISTORIC TREES.



THIS SHEET NOT VALID FOR CONSTRUCTION UNLESS STAMPED APPROVED

Always call 811 two full business days before you dig

**Sunshine811.com**

www.sunshine811.com



PANDA EXPRESS, INC.  
1683 Walnut Grove Ave.  
Rosemead, California  
91770  
Telephone: 626.799.9898  
Facsimile: 626.372.8288

All ideas, designs, arrangement and plans indicated or represented by this drawing are the property of Panda Express Inc. and were created for use on this specific project. None of these ideas, designs, arrangements or plans may be used by or disclosed to any person, firm, or corporation without the written permission of Panda Express Inc.

REVISIONS:

ISSUE DATE:

BID SET 1-29-2021

DRAWN BY: N. Crouch

PANDA PROJECT #: D8043 STORE XXXX

CIVIL PROJECT #: P7356

**cph** Plans Prepared By: CPH, Inc.  
5601 Mariner St., Suite 105  
Tampa, FL 33609  
Ph: 813.286.0233  
Licensees:  
Eng. C.O.A. No. 3215  
Survey L.B. No. 7143  
Arch. Lic. No. AA2600926  
Landscape Lic. No. LC0900288  
www.cphcorp.com  
**A Full Service A & E Firm**

This item has been digitally signed and sealed by James K. Winter on the date adjacent to the seal. Printed copies of this document are not considered signed and sealed and the signature must be verified on any electronic copies

PANDA EXPRESS

TRUE WARM & WELCOME 2300  
2599 S. WOODLAND BLVD.  
DELAND, FLORIDA 32720

TREE RETENTION  
PLAN

T01.0

TRUE WARM & WELCOME 2300  
D8043