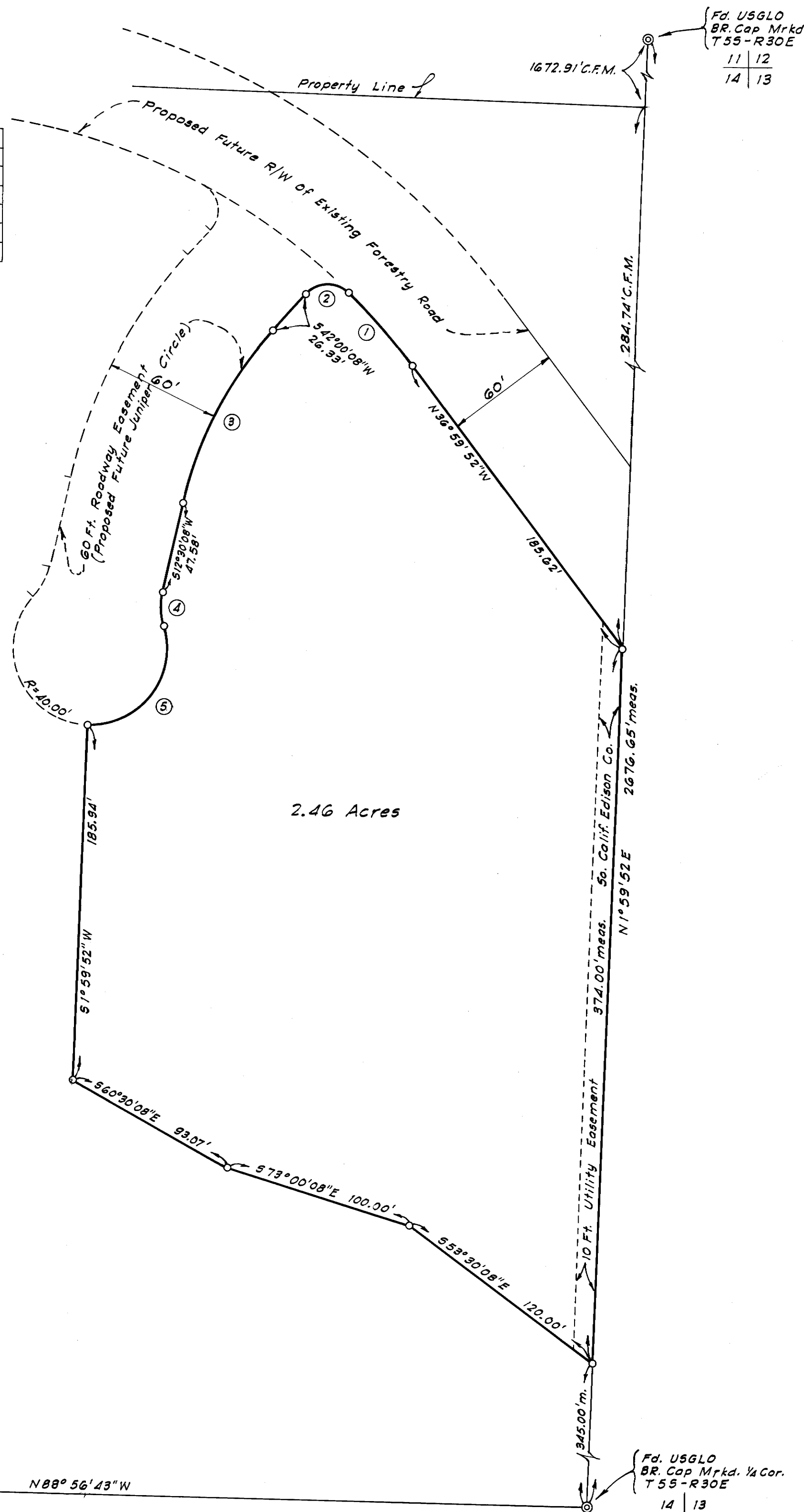


CURVE DATA

	Δ	R	L	CHORD		T
				Bearing	Dist.	
①	8°40'52"	330.00'	50.00'	N41°20'17"W	49.95'	25.05'
②	92°19'08"	15.00'	24.17'	S88°09'34"W	21.64'	15.62'
③	18°30'00"	200.00'	102.97'	S27°15'06"W	101.84'	34.37'
④	29°55'35"	35.00'	18.28'	S1°53'19"E	18.07'	9.35'
⑤	109°34'19"	40.00'	76.30'	S37°17'10"W	65.30'	56.67'



NOTE:
 ○ Indicates Set 3/4" I.P. & Tag RE 10467
 ⊙ Indicates Fd. Monuments As Noted



SURVEYORS CERTIFICATE

This map correctly represents a survey made by me in conformance with the requirements of Chapter 15, of Division 3 of the Business And Professions Code in December 1965 at the request of Al Bergum.

Gordon C. Holmes
 GORDON C. HOLMES
 RCE 10467

COUNTY SURVEYORS CERTIFICATE

I have examined this map for conformance with the requirements of Chapter 15 of Division 3 of the Business And Professions Code this _____ day of _____, 1966.

County Surveyor

RECORDERS CERTIFICATE 2034

Filed for record this _____ day of _____, 1966
 at _____ M. in Book _____ of Maps at page _____,
 at the request of Gordon C. Holmes.

Lucy M. White
 County Recorder

BASIS OF BEARINGS

All bearings are based on solar observation and are true.

RECORD OF SURVEY

OF A PARCEL OF LAND IN THE SE 1/4 OF THE
 NE 1/4 OF SEC. 14, T55-R30E, MDB&M,
 MONO COUNTY, CALIFORNIA.