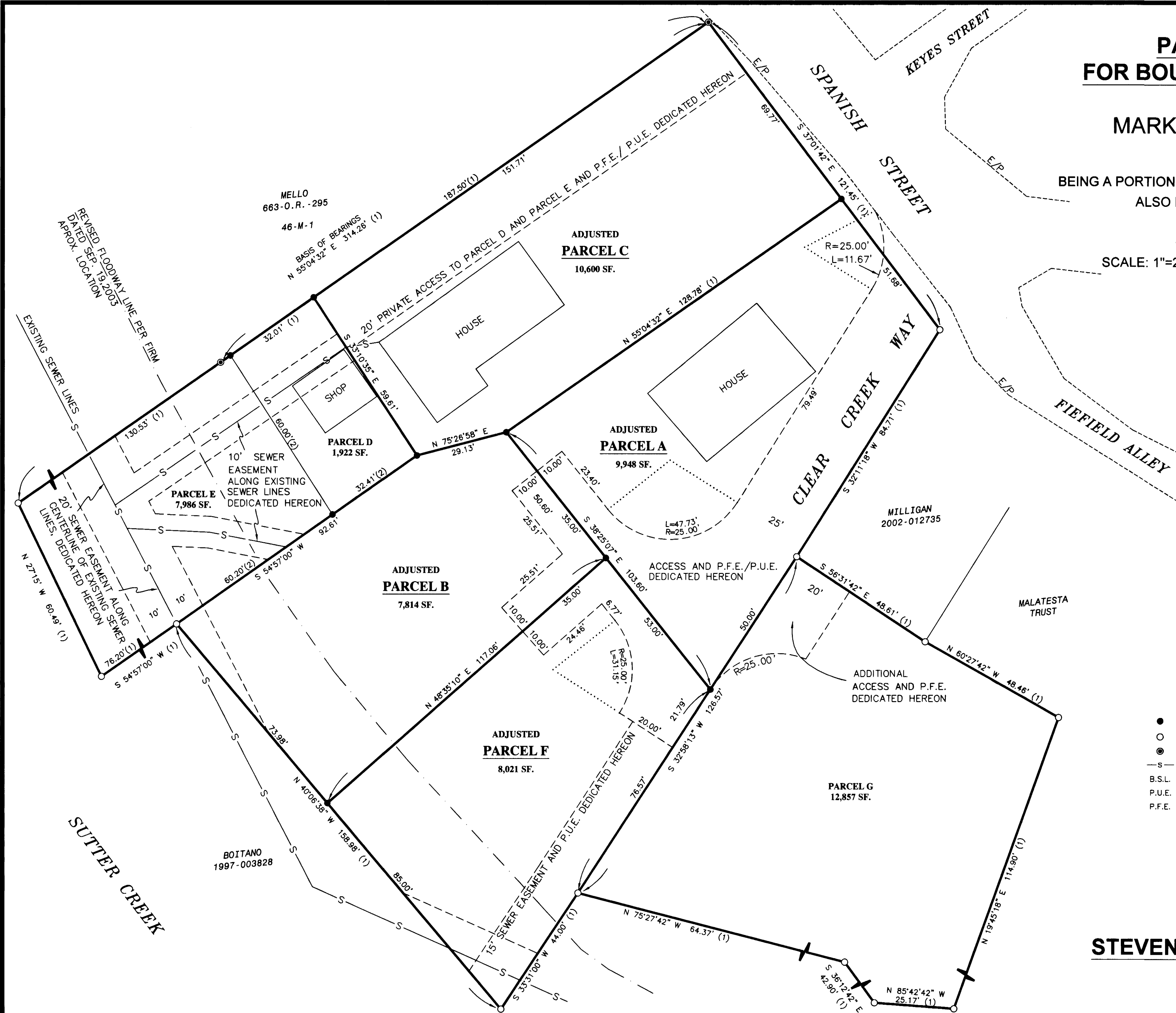


PARCEL MAP NO. 2740 **FOR BOUNDARY LINE ADJUSTMENT** **FOR** **MARK AND LYNETTE GERLACH**

BEING A PORTION OF THE NE 1/4 OF SECTION 7, T.6N., R.11E., M.D.M.
 ALSO BEING A PORTION OF LOT 5 BLOCK 16,
 CITY OF SUTTER CREEK
 AMADOR COUNTY, CALIFORNIA

SCALE: 1"=20' OCTOBER, 2008 SHEET 2 OF 2



NOTES AND LEGEND

- SET 5/8" REBAR WITH CAP STAMPED L.S. 5257
- FOUND 5/8" REBAR WITH CAP STAMPED L.S. 5257 PER 56-M-39
- ⊙ FOUND 3/4" REBAR WITH CAP STAMPED L.S. 5257 PER 56-M-39
- S— EXISTING SEWER LINES
- B.S.L. BUILDING SETBACK LINE
- P.U.E. PUBLIC UTILITY EASEMENT
- P.F.E. PUBLIC FACILITY EASEMENT

- (1) RECORD AND MEASURED DATA PER 56-M-39
- (2) RECORD DATA PER 2003-0010220

THE BASIS OF BEARINGS AS SHOWN HEREON IS PER 56-M-39

STEVEN W. BROWN- LAND SURVEYING

27 MAIN ST. JACKSON, CA 95642 (209)223-1061

SCALE: 1"=20' W.O. 3456.2 OCT. 2008 SHEET 2 OF 2