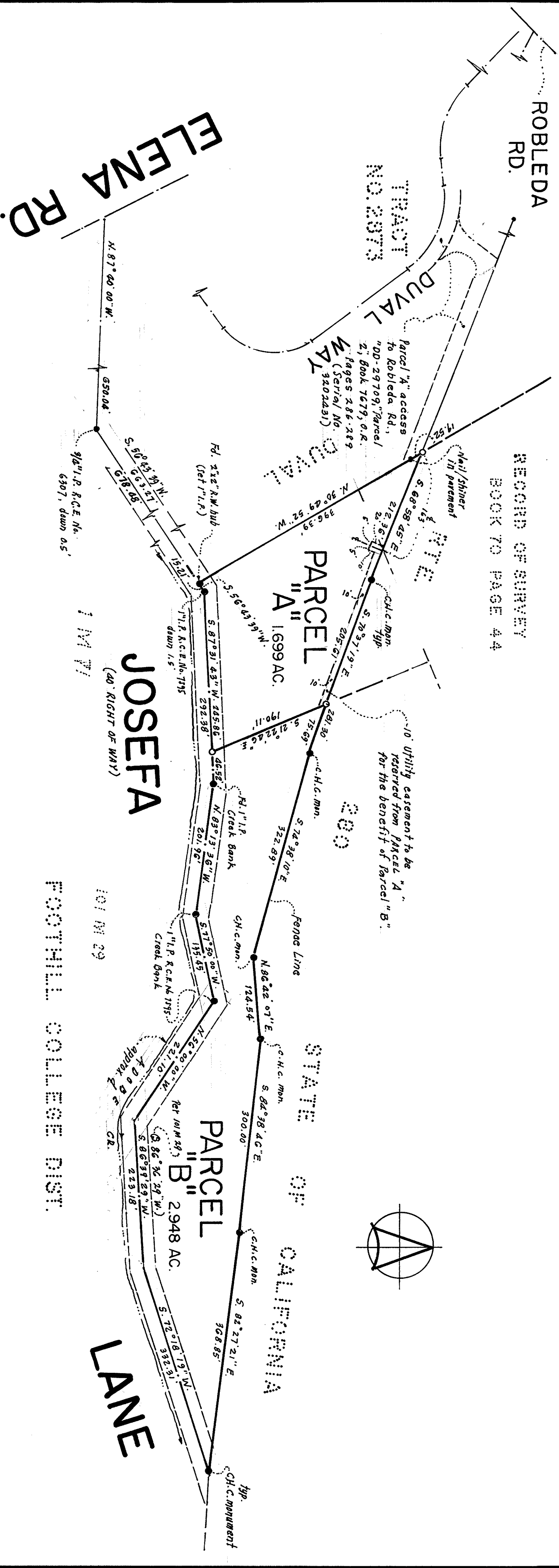


RECORD OF SURVEY
BOOK 70 PAGE 44



CITY ENGINEER'S CERTIFICATE:

This Map conforms with the requirements of the Subdivision Map Act and local ordinance.

ALEXANDER D. RUSSELL, CITY ENGINEER, TOWN OF LOS ALTOS HILLS

Alexander D. Russell July 30, 1976
R.C.E. 5708

BASIS OF BEARINGS:

The basis of the bearings shown upon this Map is the bearing of the centerline of Josefa Ave. (S. 5° 43' 39" W.), as shown on the Map entitled "RECORD OF SURVEY," and filed for record in Book 101 of Maps, at Page 29, Records of Santa Clara County. All distances and dimensions are given in feet and decimals thereof.

LEGEND AND NOTES:

Found monument type noted. Set 1" Iron Pipe Monument.

SURVEYOR'S CERTIFICATE:

This map correctly represents a map made by me in conformance with the requirements of the Land Surveyor's Act at the request of CLAYTON C. SMITH, in Feb. 1976.

JOHN W. RILEY, CIVIL ENGINEER

John W. Riley July 22, 1976
R.C.E. NO. 11064

COUNTY SURVEYOR'S CERTIFICATE:

This map has been examined for conformance with the requirements of the Land Surveyor's Act this 16th day of August 1976.

DEAN P. LARSON, County Surveyor

by *Dean P. Larson* Deputy

RECORDER'S CERTIFICATE:

File No. 5334467
Fee 35.00
Filed this 9th day of August 1976, at 3:30 P.M.
Book 376 of Maps of Page 48 at the request of C.J. Smith.

GEORGE A. MANN, COUNTY RECORDER

by *George A. Mann* Deputy

JOHN W. RILEY - CIVIL ENGINEER - LOS ALTOS

LANDS OF SMITH

RECORD OF SURVEY

BEING PORTIONS OF LOTS 338, 34 MAP OF THE SUBDIVISION OF LOT 3 OF THE TAAFFE PARTITION, BOOK 1 OF MAPS PAGE 71, AND A PORTION OF LOT 1 OF THE M. & M. TAAFFE SUBDIVISION OF LOT 4, BK. 1 MAPS PG. 72, 73

TOWN OF LOS ALTOS HILLS

SCALE: 1" = 100'

CALIFORNIA

APRIL 1976