

SURVEYOR'S CERTIFICATE

THIS MAP WAS PREPARED BY ME OR UNDER MY DIRECTION AND IS BASED UPON A FIELD SURVEY IN CONFORMANCE WITH THE REQUIREMENTS OF THE SUBDIVISION MAP ACT AT THE REQUEST OF AVERY CONSTRUCTION COMPANY IN AUGUST, 1967. I HEREBY CERTIFY THAT IT CONFORMS TO THE APPROVED TENTATIVE MAP AND THE CONDITIONS OF APPROVAL THEREOF; THAT ALL PROVISIONS OF APPLICABLE STATE LAW AND LOCAL ORDINANCES HAVE BEEN COMPLIED WITH.

JACK R. KUZIA R.C.E. NO. 11615

Jack R. Kuzia

CITY ENGINEERS CERTIFICATE

THIS MAP HAS BEEN EXAMINED THIS 26 DAY OF September, 1967, FOR CONFORMANCE WITH THE REQUIREMENTS OF SECTION 11575 OF THE SUBDIVISION MAP ACT.

DONALD M. SOMERS
CITY ENGINEER
SUNNYVALE, CALIF.

Donald M. Somers

RECORDER'S CERTIFICATE

FILE NO. 3293300 FEE \$ 5.00 PAID.
FILED FOR RECORD THIS 27 DAY OF Sept., 1967, AT 3:09 P.M., IN BOOK 228 OF MAPS, AT PAGE 41, AT THE REQUEST OF MACKAY AND SOMERS.

GEORGE E. FOWLES
COUNTY RECORDER

George E. Fowles
DEPUTY

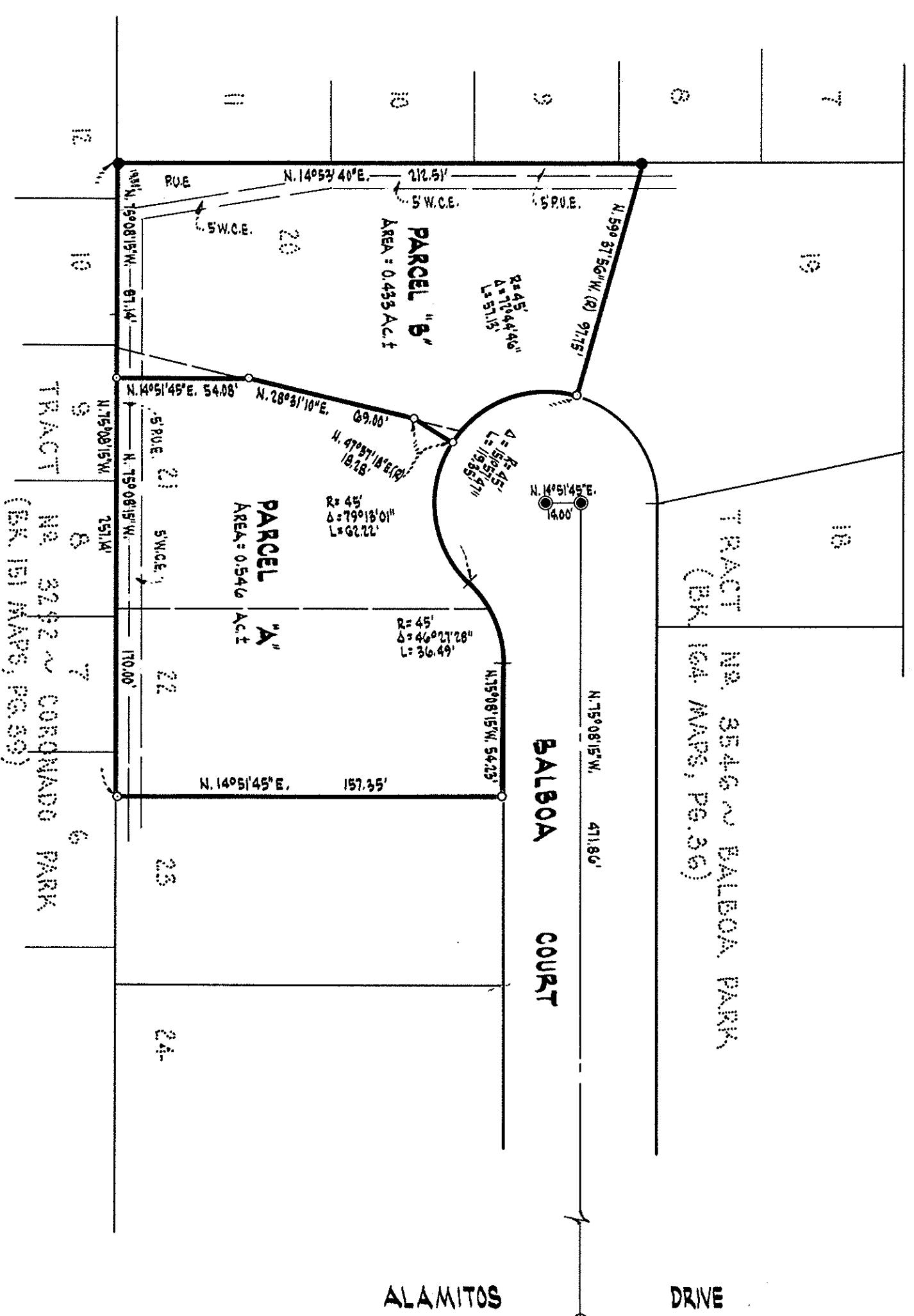
PARCEL MAP

CONSISTING OF ONE SHEET

BEING A REDIVISION OF LOTS 20, 21 AND 22 OF TRACT NO. 3546, BALBOA PARK (BK. 164 OF MAPS, AT PG. 36, SANTA CLARA COUNTY RECORDS) AND LYING WITHIN THE CITY OF SUNNYVALE, CALIFORNIA
AUGUST 1967
SCALE: 1" = 50'

MacKay & Somers

CIVIL ENGINEERS
1130 W. EVELYN AVE. SUNNYVALE



BASIS OF BEARINGS

THE BEARING N. 19° 08' 15" W. ALONG THE CENTERLINE OF BALBOA COURT AS SHOWN ON THAT CERTAIN MAP ENTITLED TRACT NO. 3546 BALBOA PARK RECORDED IN BOOK 164 OF MAPS AT PAGE 36, SANTA CLARA COUNTY RECORDS, WAS TAKEN AS THE BASIS OF BEARINGS SHOWN HEREON.

NOTES ~ LEGEND

ALL DISTANCES AND DIMENSIONS ARE GIVEN IN FEET AND DECIMALS THEREOF.

- INDICATES 3/4" IRON PIPE SET.
- INDICATES 3/4" IRON PIPE FOUND
- INDICATES STANDARD CITY MONUMENT FOUND