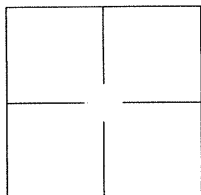


CORNER RECORD

AGENCY INDEX BK 128 PG 86Document Number CR13610City of OAKLANDCounty of ALAMEDA, CaliforniaBrief Legal Description MONUMENT ON BARLETT STREET AND PENNIMAN AVENUE

CORNER TYPE

Government Corner ☐ Control ☒
Meander ☐ Property ☐
Rancho ☐ Other ☐

Date of Survey 2019-06-26

COORDINATES (Optional)

N. _____ E. _____

Elevation _____

Units Metric ☐ U.S. Survey Foot ☐

Horizontal Datum _____

Zone _____ Epoch Date _____

Vertical Datum: _____

☐ Complies with Public Resources Code §§8801-8819☐ Complies with Public Resources Code §§8890-8902PLS Act Ref.: ☐ 8765(d) ☒ 8771 ☐ 8773

Other: _____

Corner/
Monument: ☒ Left as found ☐ Established ☐ Rebuilt ☒ Pre-Construction
☐ Found and tagged ☐ Reestablished ☒ Referenced ☐ Post-Construction

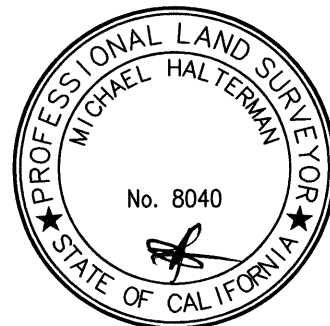
Narrative of corner identified and monument as found and set or reset:

☒ See sheet #2 for description(s):

FOUND MONUMENTS AS NOTED ON SHEET 2 REFERENCED PRIOR TO CONSTRUCTION ACTIVITIES.

SURVEYOR'S STATEMENT

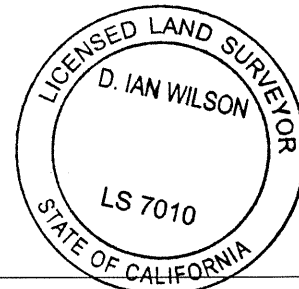
This Corner Record was prepared by me or under my direction in conformance with

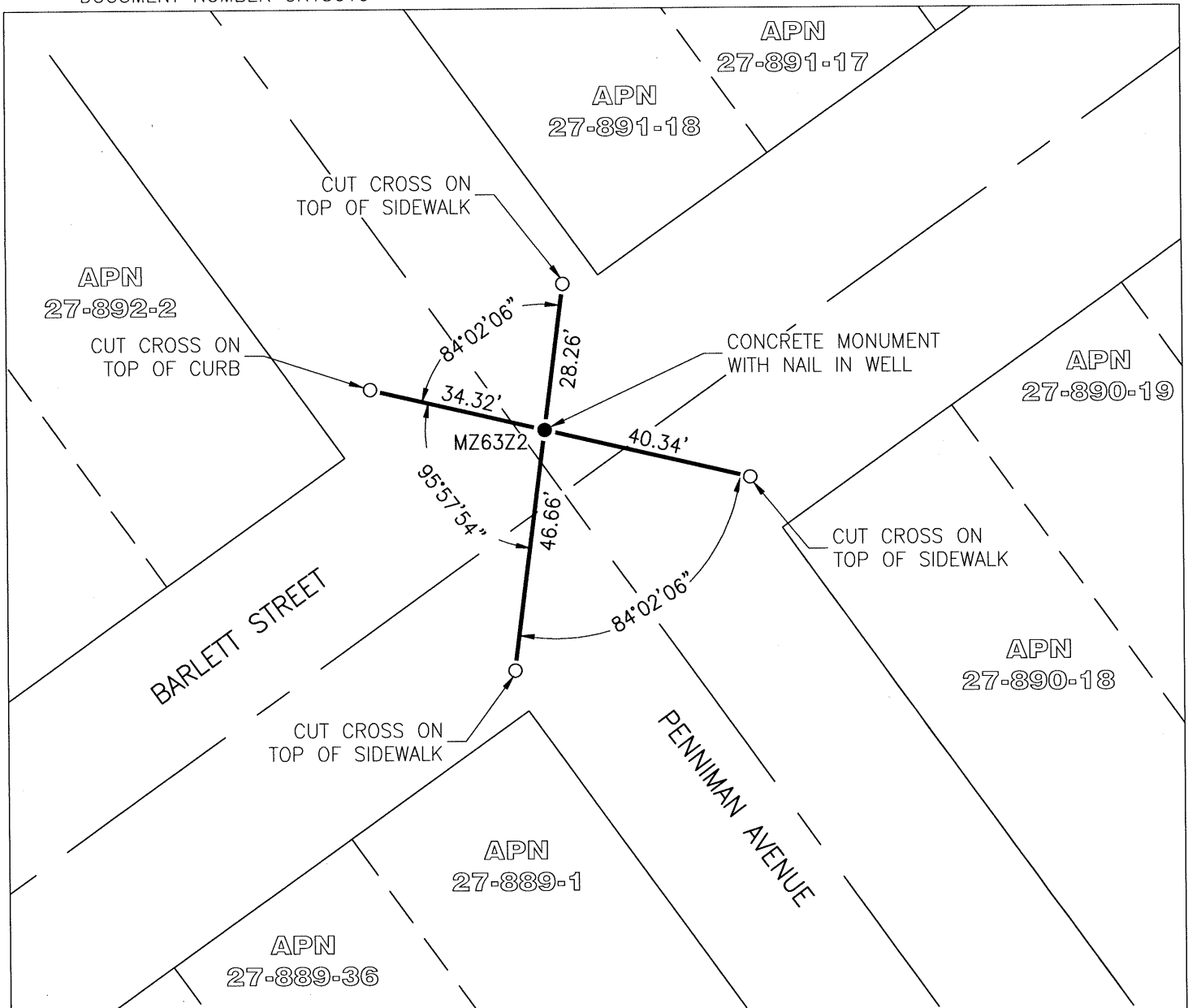
the Professional Land Surveyor's Act on 13 November, 2019.Signed [Signature] P.L.S. or R.C.E. No.: 8040

COUNTY SURVEYOR'S STATEMENT

This Corner Record was received _____, 2019 and examinedand filed DEC 02 2019, 2019.Signed D. Ian Wilson P.L.S. or R.C.E. No.: 7010Title **ALAMEDA COUNTY SURVEYOR**

County Surveyor's Comment _____





LEGEND

- FOUND MONUMENT AS NOTED
- SET REFERENCE POINTS WITH TAG STAMPED "LS 8040" AS SHOWN
- APN ASSESSOR'S PARCEL NUMBER
- MZ63Z2 ALAMEDA COUNTY MONUMENT ID

SCALE

1" = 30'