

PLUMBING FIXTURE SCHEDULE				
A	TANK WATER CLOSET (HANDICAPPED): AMERICAN STANDARD 2467.016, FLUSH TANK WITH TRIP LEVER ON OPEN SIDE OF TOILET. FLOOR MOUNTED. STANDARD WHITE FINISHED. ELONGATED. FRONT BOWL. PRESSURE ASSISTED 1.6 G.P.F. RIM 16 1/2" A.F.F. AM. STD. 4142.600 TANK COVER LOOKING DEVICE. AM. STD. 5321.110 OPEN FRONT SEAT LESS COVER.			
B	LAVATORY: ZURN MODEL Z534, 20"x18" WALL HUNG LAVATORY, VITREOUS CHINA, WITH 4" CENTER FAUCET HOLES & ZURN Z-1231 CONCEALED ARM CARRIER PROVIDE & INSTALLED BY CONTRACTOR CONTACT CHRISTINE MCALXANDER 800-459-7099 PANDARG@HJCINC.COM			
C	NOT USED			
D	FLOOR DRAIN: ZURN # ZB415-B5 CAST IRON DRAIN WITH 5" ROUND POLISHED BRONZE TOP, MEMBRANE FLASHING CLAMP. PROVIDE 3" OUTLET WITH P-TRAP. CLEAN AND POLISH AFTER INSTALLATION. REFER TO DETAIL. 17/P-500. PROVIDE TRAP PRIMER			
D1	FLOOR DRAIN: ZURN # ZB415-B5 CAST IRON DRAIN WITH 5" ROUND POLISHED BRONZE TOP, MEMBRANE FLASHING CLAMP. PROVIDE 3" OUTLET WITH P-TRAP. CLEAN AND POLISH AFTER INSTALLATION. REFER TO DETAIL. 9/P-500. PROVIDE TRAP PRIMER			
E	FLOOR SINK: ZURN # Z1901-2-32, RECEPTOR WITH 12" SQUARE TOP x 8" DEEP CAST IRON BODY WITH ACID-RESISTING ENAMEL INTERIOR. RECEPTOR PROVIDED WITH ALUMINUM DOME STRAINER WITHOUT GRATE.			
E1	FLOOR SINK: ZURN # Z1901-2-32, RECEPTOR WITH 12" SQUARE TOP x 8" DEEP CAST IRON BODY WITH ACID-RESISTING ENAMEL INTERIOR. RECEPTOR PROVIDED WITH PORCELAIN ENAMEL LOOSE-SET 1/2 GRATE AND ALUMINUM DOME STRAINER.			
F	NOT USED			
G	FLOOR DRAIN WITH FUNNEL: ZURN # ZB415-AR-4 ACID RESISTING EPOXY COATED CAST IRON DRAIN WITH 5" ROUND POLISHED BRONZE TOP, 4" FUNNEL. PROVIDE 2" OUTLET WITH P-TRAP. CLEAN AND POLISH AFTER INSTALLATION. REFER TO DETAIL. PROVIDE TRAP PRIMER			
H	NOT USED			
I	GREASE INTERCEPTOR: JENSEN JP2000EE-G, 2000 GALLONS, 6" INLET AND OUTLET. TRAFFIC COVER. REFER TO CIVIL DRAWINGS FOR LOCATION. THE DESIGN OF THE GREASE INTERCEPTOR SHALL BE APPROVED BY LOCAL CITY REQUIREMENT.			
J	WATER HAMMER ARRESTER: J. R. SMITH #5020, 1" NIPPLE OR EQUAL			
K	PROVIDE: ZURN 375ST STAINLESS STEEL REDUCED PRESSURE PRINCIPLE ASSEMBLY AT BAG-N-BOX. REFER TO 15/P-500			
L	HOSE BIBB: ACORN #8121 WITH VACUUM BREAKER, CHROME PLATED.			
L1	HOSE BIBB: WOODFORD MB65 FREEZELESS COMMERCIAL CONCEALED BOX TYPE WALL HYDRANT IN SECURE LOCK STYLE MODULAR BOX. SINGLE CHECK ANTI SIPHON VACUUM BREAKER, CHROME HEAD, BRASS VALVE BODY HYDRANT WITH 3/2" HOSE CONNECTION 18" A.F.F.			
M	TRENCH DRAIN: ZURN #Z-886-RFS, 6" WIDE x 80" LONG, TRENCH DRAIN SYSTEM. MODULAR CHANNEL SECTIONS SHALL BE MADE OF HIGH DENSITY POLYETHYLENE WITH INTERLOCK ENDS, A RADIUS BOTTOM AND REINFORCED STAINLESS STEEL SLOTTED GRATE.			
N	PROVIDE WATTS SD-3 DUAL CHECK VALVE WITH ATMOSPHERIC PORT AND STRAINER AFTER EACH BV.			
O	FREEZE PROOF ROOF HYDRANT: WOODFORD MODEL: SRH-MS			
P1	MOP SINK: GSW # SE2424FM 24"x24" STAINLESS STEEL UNIT, 18 GA. STAINLESS STEEL. CHICAGO FAUCET #897 WITH INTEGRAL STOPS IN SHANKS, WALL BRACE, HOSE THREADS, PAIL HOOK, VACUUM BREAKER, ROUGH BRASS FINISH; THREE FOOT RUBBER HOSE; 3" TRAPPED AND VENTED WASTE CONNECTION. PROVIDE 3/4" HW & CW RI 8" OC. 36" A.F.F. PROVIDE 3/2" CW HOSE BIBB, ACORN #8121 W VACUUM BREAKER, 48" A.F.F. FOR CHEMICAL CONNECTION.			
P2	GAS WATER HEATER MFG: A.O. SMITH MODEL: BTH-120, 60 GALLON, 120,000 BTU/HR GAS INPUT. 138 GPH CONTINUOUS RECOVERY @ 100" RISE. INSTALL WITH CONTROL LOCATION / ORIENTATION AS SHOWN ON ARCH PLAN.			
CP	HW CIRC. PUMP - MFG: BELL & GOSSETT. MODEL: NBF-22U, 1/12 HP, 120 VOLT, 7.5 GPM @ 10' HEAD			
RD	RD - ROOF DRAIN: J.R. SMITH #1010 CAST IRON ROOF DRAINS WITH FLASHING COLLAR AND CAST IRON DOME. FURNISH EXTENSION (SUFFIX-E) FOR INSULATED ROOFS. SUMP RECEIVER (SUFFIX-R) AND UNDERDECK CLAMP (SUFFIX-C) FOR ALL BUT POURED-IN-PLACE INSTALLATIONS. OUTLET CONNECTION TYPE SHALL BE COMPATIBLE WITH PIPING SYSTEM.			
OD	OD - OVERFLOW ROOF DRAIN: J.R. SMITH #1070 WITH SAME FEATURES AS DESCRIBED FOR "ROOF DRAINS". STANDPIPES SHALL BE ADJUSTED AND SECURED SO THAT AFTER THE INSTALLATION OF THE DRAIN ASSEMBLY, THE TOP OF THE STANDPIPE SHALL BE (2') ABOVE THE ADJACENT ROOF SURFACE.			
RD2	RD2- ROOF DRAIN: J.R. SMITH #101H04 PVC ROOF DRAIN WITH FLASHING COLLAR AND DOME. SUMP RECEIVER (SUFFIX-R) AND UNDERDECK CLAMP (SUFFIX-C) FOR ALL BUT POURED-IN-PLACE INSTALLATIONS. OUTLET CONNECTION TYPE SHALL BE COMPATIBLE WITH PIPING SYSTEM.			

FIXTURE BRANCH SCHEDULE				
FIXTURE	COLD WATER	HOT WATER	WASTE	VENT
WATER CLOSET (HANDICAPPED)	1/2"	--	4"	2"
LAVATORY	1/2"	1/2"	2"	1 1/2"
2 AND 3 - COMP SINK	1/2"	1/2"	3"	2"
HAND SINK	1/2"	1/2"	2"	1 1/2"
MOP SINK (J.S.)	1/2"	1/2"	3"	2"
EQUIPMENT	1/2"	--	--	--
FLOOR DRAIN/SINK	--	--	2" OR 3"	2"

KITCHEN EQUIPMENT SCHEDULE	
ITEMS IN THIS SCHEDULE ARE FURNISHED BY THE OWNER AND INSTALLED BY THE GENERAL CONTRACTOR UNLESS NOTED OTHERWISE AND CONNECTED TO THE PLUMBING UTILITIES BY THE PLUMBING CONTRACTOR, WHO SHALL INSTALL ALL PLUMBING DEVICES FURNISHED WITH EQUIPMENT.	
WASTE, FS = FLOOR SINK, CFD = CONDENSATE FLOOR DRAIN, VB = VACUUM BREAKER, FLEX = A SIX FOOT COILED LENGTH OF FOOD QUALITY FLEXIBLE REINFORCED PLASTIC TUBING CONNECTED FROM THE ROUGH IN TO THE EQUIPMENT WITH ALL REQUIRED ADAPTERS AND HOSE CLAMPS.	
ALL PIPES MUST MAINTAIN A MINIMUM CLEARANCE OF 6" AFF AND MUST BE WELL SUPPORTED. NO FLOOR SUPPORTS ALLOWED.	
4A	SERVING COUNTER MOUNTED SODA MACHINE: IF PROVIDED, SODA MACHINE INSTALLER TO PROVIDE DRAIN LINES FROM ICE BIN AND SODA MACHINE TO FS WITH 1" AIR GAP. DRAIN LINE TO BE INSULATED. WATER TO SODA MACHINE TO BE PROVIDED THROUGH BUNDLE FROM FILTER AND RACK IN KITCHEN BY SODA MACHINE INSTALLER.
4AB	BEVERAGE COUNTER MOUNTED SODA MACHINE WITH ICE MACHINE: PROVIDE 3/2" COPPER PIPE IW FROM COUNTER TROUGH DRAIN TO FS WITH 1" AIR GAP. INSULATE. WATER TO SODA MACHINE TO BE PROVIDED THROUGH BUNDLE FROM FILTER AND RACK IN KITCHEN BY SODA MACHINE INSTALLER. NO LEGS TO BE INSTALLED. MACHINE TO SET DIRECTLY ON COUNTER.
4F	WATER FILTER: PROVIDE 3/2" CW AT 96" AFF WITH BV. PROVIDE FLEX AND REDUCED PRESSURE STAINLESS STEEL BACKFLOW PREVENTOR, OR OTHER DEVICE AS REQUIRED BY LOCAL CODE. INSTALL OWNER PROVIDED WATER FILTER AND MAKE CONNECTIONS TO BACKFLOW PREVENTOR AND WATER SUPPLY. PROVIDE ALL REQUIRED FITTINGS TO ALLOW SODA MACHINE INSTALLER TO HOOK UP BOOSTER PUMP TO WATER FILTER. REFER TO DETAIL. 15/P-500.
6B	22"D REAR COUNTER WITH HAND SINK, PROVIDE 3/2" CW AND 3/2" HW AT 24" AFF AND 8" OC WITH CHROME-PLATED, 1/2 TURN BALL VALVES. CONNECT TO OWNER SUPPLIED FAUCETS WITH METAL FLEX PROVIDE 2" TRAP AND WALL MOUNTED CLEAN-OUT. ALL EXPOSED DRAIN PIPES AND FITTINGS TO BE CHROME PLATED, NOT P.V.C.
9D	ICE TEA MAKER: PROVIDE 3/2" CW @ 24" A.F.F. PROVIDE ALL REQUIRED FITTINGS TO ALLOW ICE TEA INSTALLER TO HOOK UP ONE BV, OTHER BV FOR OTHER EQUIPMENT.
10J	SODA MACHINE MOUNTED ICE MACHINE: PROVIDE 1/2" CW AT 24" A.F.F. WITH BV. PROVIDE ALL REQUIRED FITTINGS TO ALLOW ICE MACHINE INSTALLER TO HOOK UP ICE MACHINE TO CW.
20A	CHINESE RANGE: PROVIDE 3/2" CW AT 10" AFF WITH BV. PROVIDE PRESSURE TYPE VB OR OTHER BACKFLOW DEVICE AS REQUIRED BY LOCAL CODE, AND CONNECT TO OWNER SUPPLIED FAUCETS. PROVIDE 2" COPPER PIPE IW TO FS WITH 2" AIR GAP. PROVIDE 1/2" GAS SUPPLY AT 9" AFF WITH EASILY ACCESSIBLE SHUT-OFF VALVE. INSTALL OWNER SUPPLIED GAS REGULATOR AND ADJUST GAS LEVEL TO BURNERS.
20Q	CHINESE RANGE: PROVIDE 3/2" CW AT 10" AFF WITH BV. PROVIDE PRESSURE TYPE VB OR OTHER BACKFLOW DEVICE AS REQUIRED BY LOCAL CODE, AND CONNECT TO OWNER SUPPLIED FAUCETS. PROVIDE 2" COPPER PIPE IW TO FS WITH 2" AIR GAP. PROVIDE 1" GAS SUPPLY DOWN TO 9" AFF REDUCE TO 3/2" AT EQUIPMENT CONNECTION WITH EASILY ACCESSIBLE SHUT-OFF VALVE. INSTALL OWNER SUPPLIED GAS REGULATOR AND ADJUST GAS LEVEL TO BURNERS.
21B	FRYER: PROVIDE 1/2" GAS SUPPLY DOWN TO 14" AFF THEN TRANSITION TO 1" WITH 90° ANGLE AND SHUT OFF VALVE. PROVIDE ALL REQUIRED FITTINGS AND INSTALL OWNER SUPPLIED QUICK DISCONNECT FLEXIBLE PIPE AND CONNECT TO UNITS WITH 90° ANGLE. SEE DETAIL ON P-500
25A	RICE COOKER: PROVIDE 3/2" GAS SUPPLY AT 30", AND 3/2" GAS SUPPLY AT 10" AFF WITH SHUT OFF VALVES, ONE FOR EACH UNIT. PROVIDE ALL REQUIRED FITTINGS AND INSTALL OWNER SUPPLIED QUICK DISCONNECT FLEXIBLE PIPE AND CONNECT TO UNITS.
31	WALK-IN COOLER: PROVIDE 1" COPPER PIPE IW FROM DRAIN PAN ON EACH UNIT TO FLOOR DRAIN WITH P" TRAP AND 1" AIR GAP. MOUNT ALL PIPES WITHIN WALK-IN BOX WITH 1" HOLD-OFF SUPPORTS.
32	WALK-IN FREEZER: PROVIDE 1" COPPER PIPE IW FROM DRAIN PAN ON EACH UNIT TO FLOOR DRAIN WITH P" TRAP AND 1" AIR GAP. MOUNT ALL PIPES WITHIN WALK-IN BOX WITH 1" HOLD-OFF SUPPORTS. PROVIDE HEAT TRACE REFER TO ELECTRICAL DRAWING.
40A	POT SINK: PROVIDE 3/2" CW AND 3/2" HW AT 14" AFF AND 8" OC WITH BVS & CV. CONNECT TO OWNER SUPPLIED FAUCET WITH COPPER PIPING. PROVIDE 2" COPPER PIPE IW (MANIFOLD ALL COMPARTMENT DRAINS INTO ONE LINE) TO FS WITH 2" AIR GAP, OR, IF REQUIRED BY LOCAL CODE, INSTALL 2" COPPER PIPE DIRECTLY TO SEWER SYSTEM. INSTALL OWNER SUPPLIED LEVER DRAIN STOPS. SEE DETAIL ON SHEET P-500.
40B	FAUCET FOR CHEM: T&S BRASS MODEL #B-0669-POL. PROVIDED BY G.C.
41B	SINGLE BOWL PREP SINK: PROVIDE 3/2" CW AND 3/2" HW AT 14" AFF. AND 8" OC WITH BVS. CONNECT TO OWNER SUPPLIED FAUCETS WITH COPPER PIPING. PROVIDE 2" COPPER PIPE IW TO FS WITH 2" AIR GAP, OR, IF REQUIRED BY LOCAL CODE, INSTALL 2" COPPER PIPE DIRECTLY TO SEWER SYSTEM. INSTALL OWNER SUPPLIED LEVER DRAIN STOPS.
41C	COPPER PIPE IW TO FS WITH 2" AIR GAP, OR, IF REQUIRED BY LOCAL CODE, INSTALL 2" COPPER PIPE DIRECTLY TO SEWER SYSTEM. INSTALL OWNER SUPPLIED LEVER DRAIN STOPS.
45A	HAND SINK, PROVIDE 3/2" CW AND 3/2" HW AT 24" AFF AND 8" OC WITH CHROME-PLATED, 1/2 TURN BALL VALVES. CONNECT TO OWNER SUPPLIED FAUCETS WITH METAL FLEX PIPING. PROVIDE 2" DRAIN PIPE WITH 1" TRAP AND WALL MOUNTED CLEAN-OUT. ALL EXPOSED DRAIN PIPES AND FITTINGS TO BE CHROME PLATED, NOT P.V.C.

PIPE MATERIAL SCHEDULE		
SERVICE	UNDERGROUND	ABOVE GROUND
COLD & HOT WATER	TYPE "K" OR "L" HARD DRAWN COPPER TUBE	PEX
SANITARY WASTE	*SCH. 40 PVC	*SCH. 40 PVC
SANITARY VENT	*SCH. 40 PVC	*SCH. 40 PVC
GAS	---	BLACK STEEL, SCHEDULE 40
INDIRECT DRAIN	---	HARD DRAWN COPPER TUBE TYPE "M"
*SCH. 40 PVC IS PREFERRED IF APPROVED BY AUTHORITY HAVING JURISDICTION. PROVIDE SCHEDULE 40 PVC FOR ALL WASTE VENT PIPING & FITTINGS.		

- PLUMBING KEY NOTES
- SODA CONDUIT: PROVIDE 6" PVC CONDUIT BELOW FLOOR FROM THE SIDE OF SODA STORAGE RACK TO SODA DISPENSER PER DETAIL #4 ON SHEET P-500.
  - CONDENSATE: ROUTE SHARED CONDENSATE LINE THROUGH WALK-IN COOLER. DO NOT RUN THROUGH WALK-IN FREEZER. PROVIDE 1" INSULATED CONDENSATE DRAIN PIPE FROM THE EVAPORATIVE COIL. ROUTE THRU WALL INTO PRIMARY DOWNSPOUT. TURN DOWN AND TERMINATE OPEN ENDED INSIDE DOWNSPOUT. INSTALL AT MINIMUM 76" HEIGHT A.F.F. REFER TO DETAIL #2 ON SHEET P-500.
  - ROUTE WATER HEATER DRAIN PAN TO FLOOR SINK.
  - PROVIDE TRAP PRIMER FOR FLOOR SINK. SEE DETAIL. 17/P-500.
  - NOT USED.
  - RDL & OOL LINES DN. IN WALL. TERMINATE ODL THRU WALL AS CLOSE TO BOTTOM PLATE AS POSSIBLE. EXTEND 12" PAST EPIS. WATER PROOF SEAL ALL AROUND. TERMINATE RDL & OOL WITH 4" PVC LAMB'S TONGUE NOZZLE. COLOR ANTIQUE BRONZE, ARKMANN MODEL #PDN-4. (IF AVAILABLE TIE RD TO STORM SEWER UNDERGROUND)
  - COMBINATION WASTE/VENT
  - 3" PVC ROOF DRAIN WITH 3" PVC LAMB'S TONGUE NOZZLE. COLOR ANTIQUE BRONZE, ARKMANN MODEL #PDN-3. OVERFLOW ACHIEVED WITH SCUPPER AT THIS CONDITION.
  - TRAP PRIMER REFER TO DETAIL. 9/P-500.
  - (AAV) STUDOR MINI-VENT AIR ADMITTANCE VALVE- INSTALL PER MANUFACTURERS INSTALLATION INSTRUCTIONS.

FIXTURE UNIT SCHEDULE						
ITEM	FIXTURE	QTY	WATER FU		SEWER FU	
			EACH	TOTAL	EACH	TOTAL
(A)	WATER CLOSET	2	5	10	4	8
(B)	LAVATORY	2	2	4	1	2
(D)(D1)	FLOOR DRAIN 3" TRAP	6	—	—	5	30
(E)(E1)	FLOOR SINK 3" TRAP	9	—	—	5	45
(P1)	MOP SINK	1	3	3	2	2
(G)	FLOOR DRAIN W/ FUNNEL 2" TRAP	1	—	—	3	3
(L)(L1)	HOSE BIBB	3	4	12	—	—
(M)	TRENCH DRAIN 3" TRAP	1	—	—	5	5
(4F)	FILTER SYSTEM	1	1	1	FS	—
(9D)	ICE TEA BREWER	2	1	2	FS	—
(10J)	400 LB ICE MACHINE	2	1	2	FS	—
(20A)	CHINESE RANGE	1	2	2	FS	—
(20Q)	CHINESE RANGE	1	2	2	FS	—
(40A)(40B)	POT SINK (3.COMP.)	1	4	4	FS	—
(41B)(41C)	PREP. SINK (1.COMP.)	2	4	8	FS	—
(45A)(6B)	HAND SINK (WALL MOUNT)	3	2	6	1	3
TOTAL			54		98	

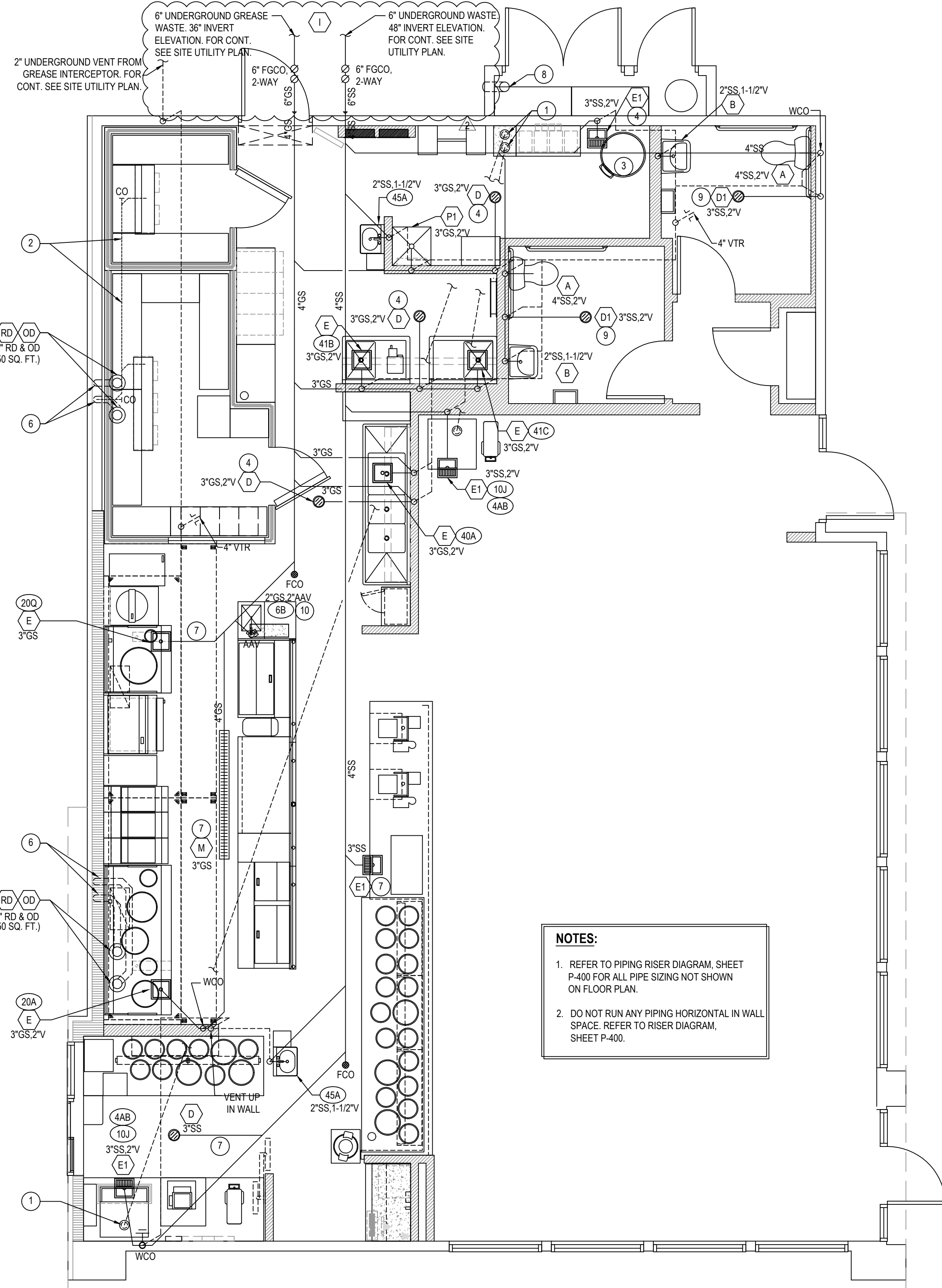
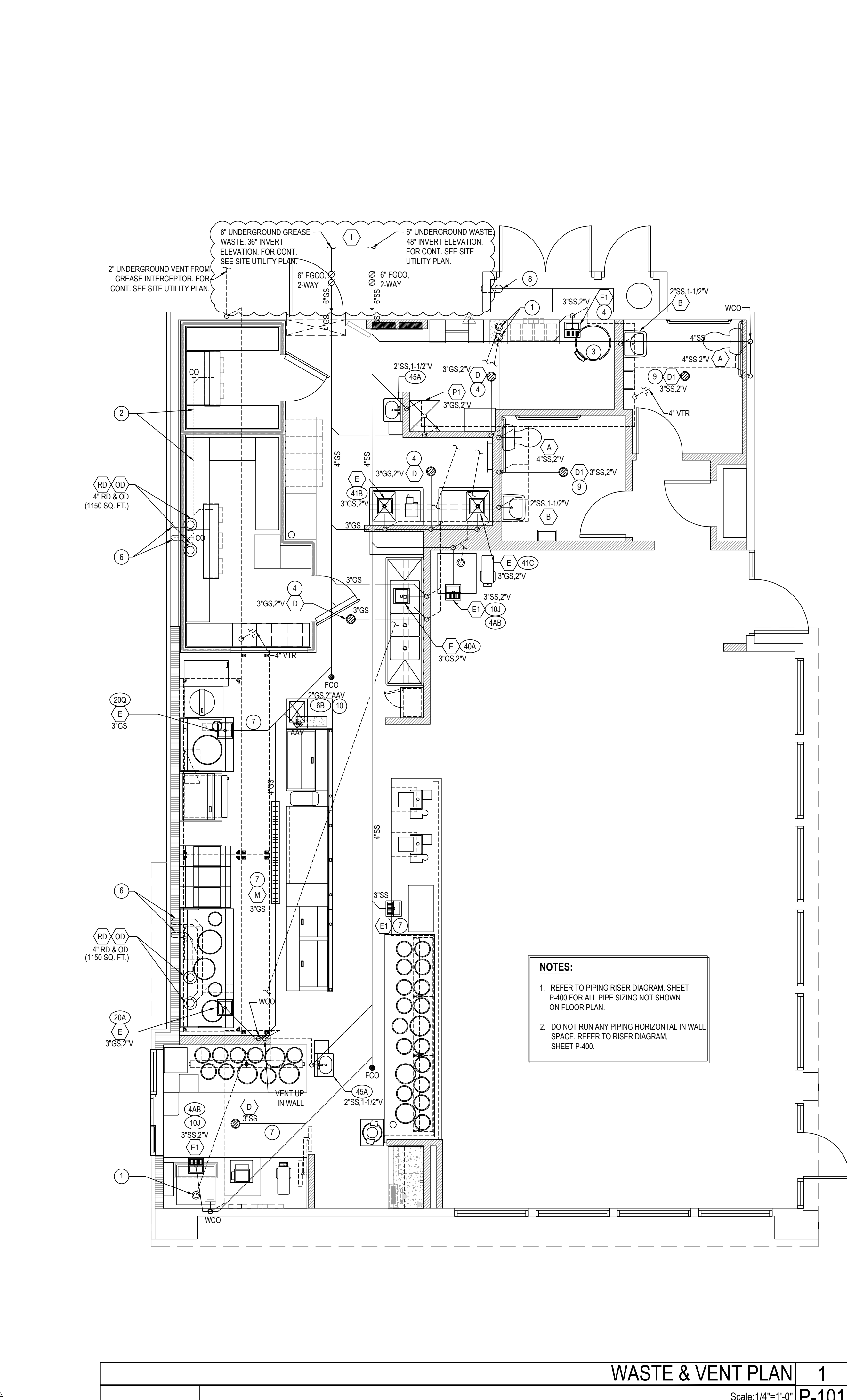
FIXTURE UNIT SUMMARY		
SERVICE		TOTAL F.U.
DOMESTIC WATER		54
SANITARY SEWER		98
SERVICE REQUIREMENTS		
SERVICE	SIZE MAIN	CAPACITY
DOMESTIC WATER	1-1/2 INCH	32 GPM
SANITARY SEWER	4 INCH	98 F.U.
FUEL GAS	3 INCH	2080 CFH
FIRE PROTECTION	INCH	GPM

WATER PIPE SIZING CHART (COLD WATER)					
PIPE SIZE	GPM	VELOCITY FT/SEC	FIXTURE UNITS		
			F - TANK	F - VALVE	
1/2"	2.5	3.5	2 F.U. @ psi	6.0	F.U. @ psi
3/4"	6.6	4.4	8 F.U. @ psi		F.U. @ psi
1"	13.4	5.2	19 F.U. @ psi		F.U. @ psi
1-1/4"	23.3	5.9	37 F.U. @ psi		6 F.U. @ psi
1-1/2"	36.7	6.6	74 F.U. @ psi		23 F.U. @ psi
2"	76.4	7.9	254 F.U. @ psi		132 F.U. @ psi

\* DOMESTIC WATER BACKFLOW PREVENTOR MODEL: "WILKINS"975XL, SIZE 1-1/2"  
\*\* PRESSURE REGULATING VALVE MODEL: \_N/A\_ SIZE N/A

WATER PIPE SIZING CHART (HOT WATER)					
PIPE SIZE	GPM	VELOCITY FT/SEC	FIXTURE UNITS		
			F - TANK	F - VALVE	
1/2"	2.5	3.5	2 F.U. @ psi		F.U. @ psi
3/4"	6.6	4.4	8 F.U. @ psi		F.U. @ psi
1"	13.2	5.0	19 F.U. @ psi		F.U. @ psi
1-1/4"	19.0	5.0	37 F.U. @ psi		6 F.U. @ psi

GREASE INTERCEPTOR CALCULATION	
1.	NUMBER OF SEATS = 68
2.	GALLONS PER SEAT = 25 GAL
3.	HOURS OF OPERATION / 12 = 12/12 = 1
4.	LOAD FACTOR = 1.0
68 X 25 X 1 X 1 = 1700 GALLON LIQUID CAPACITY INTERCEPTOR	
GREASE INTERCEPTOR MINIMUM 2000 GALLONS	



**NOTES:**

- REFER TO PIPING RISER DIAGRAM, SHEET P-400 FOR ALL PIPE SIZING NOT SHOWN ON FLOOR PLAN.
- DO NOT RUN ANY PIPING HORIZONTAL IN WALL SPACE. REFER TO RISER DIAGRAM, SHEET P-400.

WASTE & VENT PLAN		1
Scale: 1/4"=1'-0"		P-101

PANDA RESTAURANT GROUP INC.  
1683 Walnut Grove Ave.  
Rosemead, California 91770  
Telephone: 626.799.9898  
Facsimile: 626.372.8288

All ideas, designs, arrangement and plans indicated or represented by this drawing are the property of Panda Express Inc. and were created for use on this specific project. None of these ideas, designs, arrangements or plans may be used by or disclosed to any person, firm, or corporation without the written permission of Panda Express Inc.

REVISIONS:

2	04.23.2020 ISSUE FOR BID
---	--------------------------

ISSUE DATE:

1	02.21.2020 ISSUE FOR PERMIT
2	04.23.2020 ISSUE FOR BID

DRAWN BY: WRM

PANDA PROJECT #: - S8-21-D7630  
C&P PROJECT #: - 2200025

1925 Prospect Ave. Orlando, FL 32814  
P (407) 661-9100  
F (407) 661-9101  
www.c-p.com  
Florida Certified Consultant AIAA 00000000

04.23.2020

REGISTERED  
No. PE044584  
PROFESSIONAL  
ENGINEER  
ERIC ANDREW CROSS

PANDA EXPRESS  
TRUE WARM AND WELCOME 2300  
EXCHANGE BLVD AT LOGANVILLE HWY  
BETHLEHEM, GA 30620

P-101

WASTE & VENT PLAN

TRUE WARM & WELCOME 2300 R2