

Chick-fil-A

5200 Buffington Rd.  
Atlanta Georgia,  
30349-2998

#### Revisions:

Mark	Date	By
1	12/14/17	JL

OPERATOR

#### COMMENTS

△

△

△

SEAL  
THIS DOCUMENT IS NOT FOR CONSTRUCTION  
UNLESS THE ARCHITECT OR ENGINEER'S  
SIGNATURE AND SEAL APPEAR BELOW.

STACY HENSON, P.E.

#### INTERPLAN

ARCHITECTURE  
ENGINEERING  
INTERIOR DESIGN  
PROJECT MANAGEMENT

604 COURTLAND STREET  
SUITE 100  
ORLANDO, FLORIDA 32804  
PH 407.646.5009  
FX 407.629.9124

STORE  
S97-100  
Jimmy Carter Blvd  
FSU #0745

5455 Jimmy Carter Blvd  
GA, 30093-1512

SHEET TITLE  
GAS PIPING  
PLAN

VERSION: V7.025  
ISSUE DATE: 01-2017

Job No. : 17.0522

Store : 0745

Date : 10.09.17

Drawn By : LE

Checked By: JL

Sheet

P-4.I

ROUTE 3/4" POLYETHYLENE GAS B/G TO THE METER. FOR TRANSITION FROM POLYETHYLENE PIPING B/G TO STEEL AT THE METER, INSTALL ANODELESS RISER WITH INTEGRAL CONSTAB PE-TO-IPS TRANSITION FITTING BY CONTINENTAL INDUSTRIES OR EQUAL BY ELSTER. PROVIDE FULL PORT BALL VALVE EQUAL TO APOLLO 50GB SERIES WITH WING HANDLE OPTION ABOVE GRADE AT THE METER. PROVIDE BRASS VALVE TAG WITH JACK CHAIN AT VALVE MARKED "EMERGENCY SHUTOFF FOR CANOPY".

TURN 2-1/2" GAS UP TIGHT TO WALL, THRU PARAPET AND ONTO ROOF.

PROPOSED GAS METER LOCATION

NEW  
[AC#1]  
480,000 BTUS

EXIST. 2" GAS BELOW ROOF

NEW. 2-1/2" GAS

NEW. H/2" GAS

EXIST. H/4" GAS

NEW  
[AC#5]  
65,000 BTUS

NEW. H/4" CONDENSATE

EXIST. C.O.

EXISTING H/2" CONDENSATE DOWN THRU ROOF TO MOP DEMOLISHED PT, REROUTE IT TO INP-13A. RELOCATED IF IT IS REQUIRED.

NEW. H/2" GAS

NEW. H/2" GAS

NEW. H/4" GAS

(N) GAS DOWN TO RELOCATED WATER HEATER. SEE 2/P21 FOR CONTINUATION.

H/4" GAS THROUGH PARAPET AND DOWN ALONG EXTERIOR WALL. PAINT EXPOSED PIPING TO MATCH WALL COLOR BY GC. PROVIDE FULL PORT BALL VALVE EQUAL TO APOLLO 50GB SERIES WITH WING HANDLE OPTION AT 48" AFG. INSTALL ANODELESS RISER WITH INTEGRAL CONSTAB PE-TO-IPS TRANSITION FITTING BY CONTINENTAL INDUSTRIES OR EQUAL BY ELSTER. FOR TRANSITION TO POLYETHYLENE PIPING UNDERGROUND, EXTEND UNDERGROUND GAS PIPING TO CANOPY COLUMN.

## 1 ROOF PIPING PLAN

1/4" = 1'-0"

TRUE NORTH PROJECT NORTH

### PIPING LEGEND

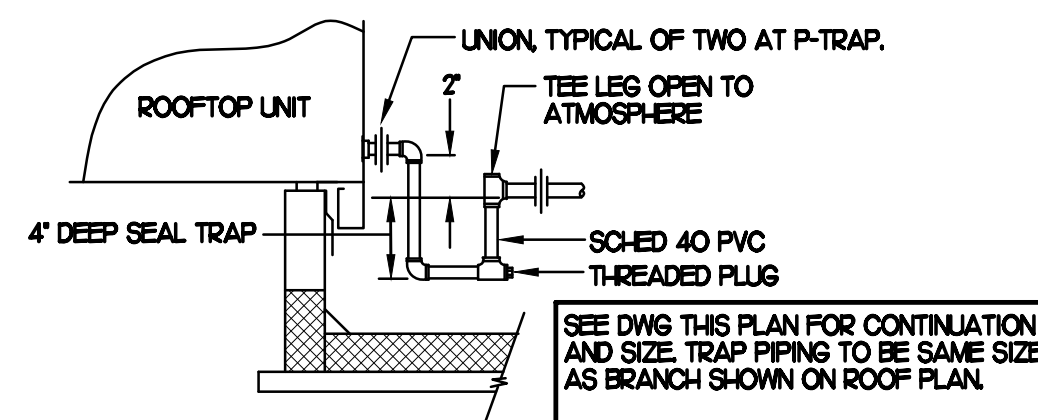
EXISTING  
NEW  
NEW CONDENSATE PIPING  
EXISTING CONDENSATE

PIPING ON ROOF SHALL NOT BE INSTALLED NEARER THAN 1'-0" FROM INSIDE EDGE OF PARAPET, UNO.

SEE DETAIL 6/A-1.8 FOR ROOFTOP PIPE PENETRATIONS.

CONDENSATE PIPING SHALL BE SCHEDULE 40 PVC.

OFFSET PIPING A MINIMUM OF 6" ABOVE TOP EDGE OF FLASHING.



SEE DWG THIS PLAN FOR CONTINUATION AND SIZE. TRAP PIPING TO BE SAME SIZE AS BRANCH SHOWN ON ROOF PLAN.

## 2 CONDENSATE DRAIN PIPING

### NOTES

1. NON ADJUSTABLE MODEL DB610 PIPE STAND TO BE USED FOR NON-ELEVATED PIPING INSTALLED FLAT ON ROOF DECK.
2. PROVIDE MODEL DBE 10-8 OR DBE 10-12 OR DBE 10-16 AS NEEDED FOR ELEVATING CONDENSATE PIPING TO MAINTAIN PROPER SLOPE AND FOR GAS PIPING CROSSING OVER CONDENSATE PIPING.
3. ENSURE GAS AND CONDENSATE PIPING DO NOT OBSTRUCT ROOFTOP EQUIPMENT ACCESS OPENINGS. RE-PIPING OF SYSTEMS DUE TO CONFLICTS WITH EQUIPMENT ACCESS OPENINGS SHALL BE DONE AT PLUMBING CONTRACTOR'S EXPENSE.

DISTANCE BETWEEN PIPE STANDS NOT TO EXCEED 8'-0" FOR GAS AND 4'-0" FOR CONDENSATE.

COOPER B-LINE DURA-BLOCK DB SERIES SHOWN.

HEAVY DUTY 100% RECYCLED RUBBER BASE WITH FACTORY REFLECTIVE RED WARNING STRIPE.

PIPE CLAMP ONE SIZE LARGER THAN PIPE DIAMETER. SECURE CLAMP TO STRUT WITH B-LINE CONNECTORS.

STRUT, FIELD ADJUST TO KEEP STRUT LEVEL. PIPE SHALL FOLLOW SLOPE OF ROOF.

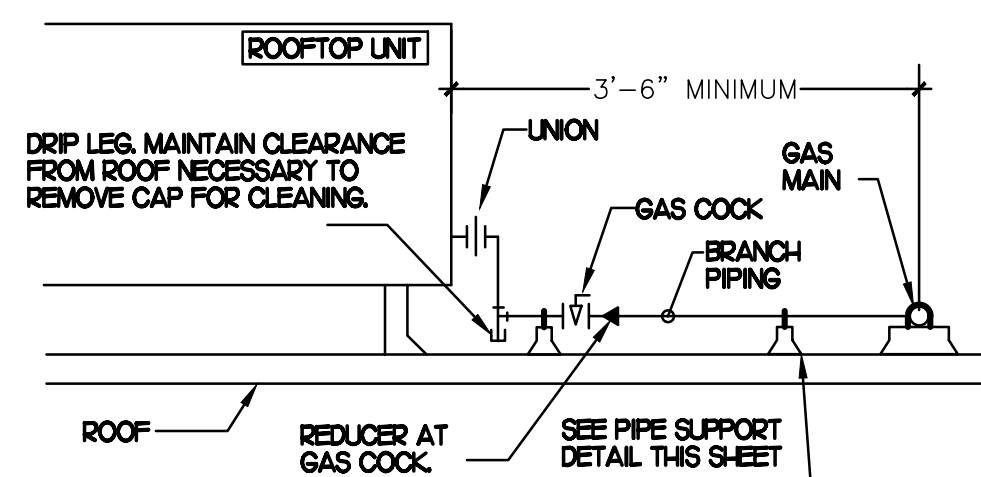
SET ON ROOF MFR APPROVED PAD.

## 3 PIPING SUPPORT

NO SCALE

### NOTES

1. INSTALL GAS PIPING SUCH THAT HVAC EQUIPMENT ACCESS PANELS AND/OR DOORS ARE IN NO WAY OBSTRUCTED BY PIPING, VALVES, OR SUPPORTS.
2. TO AVOID CONFLICT WITH AC UNIT ACCESS DOORS, INSTALL GAS PIPING NO CLOSER THAN 3'-6" FROM AC UNIT, EXCEPT FOR BRANCH LINE CONNECTED TO AC UNIT.
3. ROUTE BRANCH TAKE-OFF DIRECTLY FROM MAIN TO ROOFTOP UNIT AS SHOWN ON PLAN AND DETAILS WITHOUT LATERAL OFFSETS WHICH MAY OBSTRUCT UNIT ACCESS DOORS.



## 4 GAS PIPING AT RTU

## 5 GAS CONNECTION SCHEDULE

EQUIPMENT	GAS LOAD
NEW AC#1	480,000 BTUS
EXISTING AC#2	125,000 BTUS
EXISTING AC#3	224,000 BTUS
EXISTING AC#4	72,000 BTUS
NEW AC#5	65,000 BTUS
EXISTING WATER HEATER	199,000 BTUS
(N) NEW HEATER	184,000 BTUS
TOTAL CONNECTED LOAD	1,349,000 BTUS
REMARKS	1. EQUIVALENT TO 1,349,000 CFH • PRESSURE DROP 0.5 IN. W.C. W/ DEVELOP LENGTH OF 125 FT 2. 7" W.C. DELIVERY PRESSURE