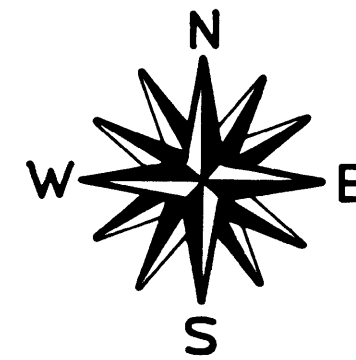


MEADOW PINES ESTATES

UNIT NO 1



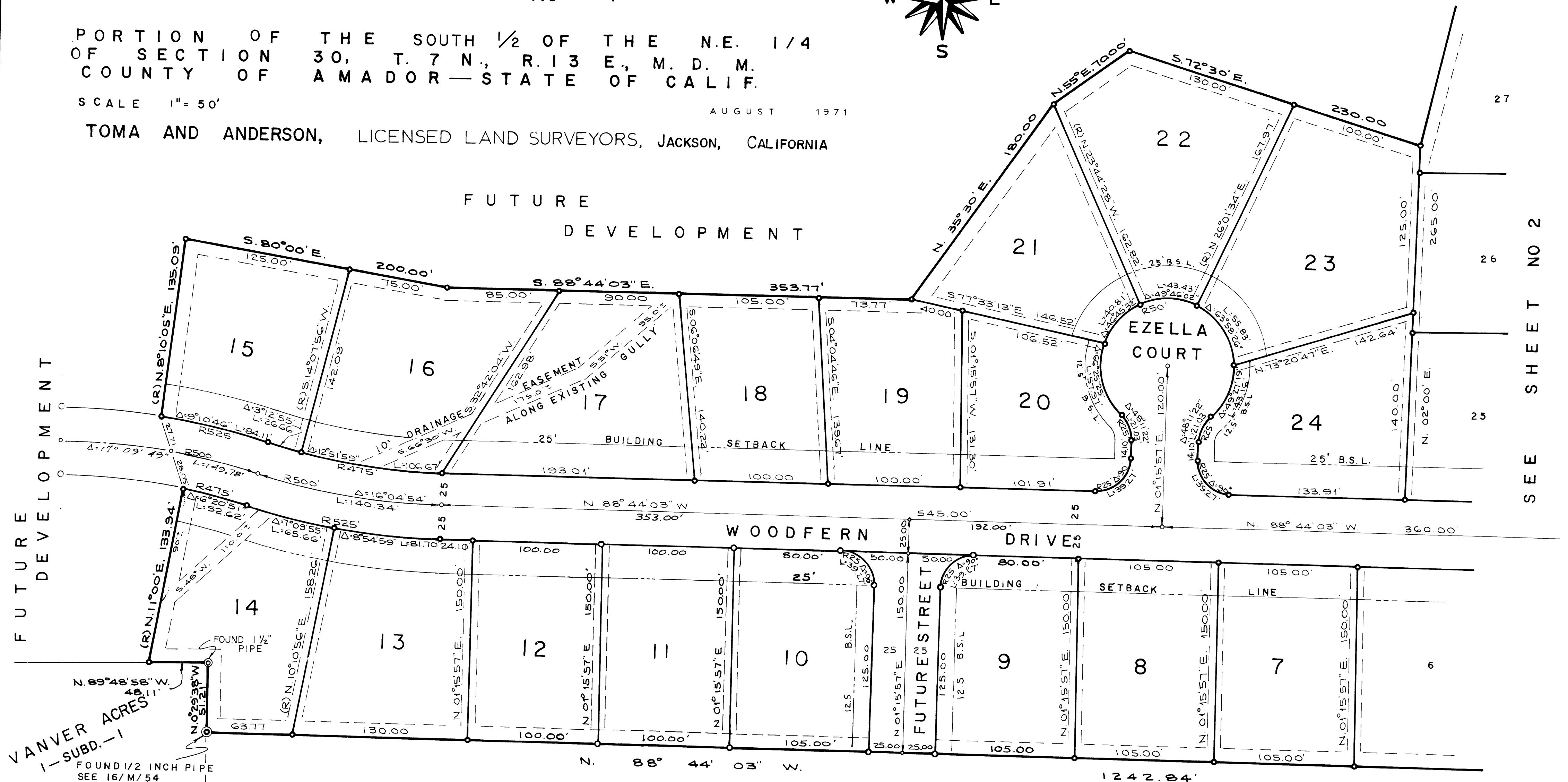
PORTION OF THE SOUTH 1/2 OF THE N.E. 1/4
OF SECTION 30, T. 7 N., R. 13 E., M. D. M.
COUNTY OF AMADOR—STATE OF CALIF.

SCALE 1" = 50'

AUGUST 1971

TOMA AND ANDERSON, LICENSED LAND SURVEYORS, JACKSON, CALIFORNIA

FUTURE
DEVELOPMENT



VANVER ACRES
1—SUBD.—1
FOUND 1/2 INCH PIPE
SEE 16/M/54

SACRAMENTO CITY

SCHOOL DISTRICT

180-OR-294

SEE SHEET NO 2