



PANDA EXPRESS, INC.
1683 Walnut Grove Ave.
Rosemead, California
91770
Telephone: 626.799.9898
Facsimile: 626.372.8288

All ideas, designs, arrangement and plans indicated or represented by this drawing are the property of Panda Express Inc. and were created for use on this specific project. None of these ideas, designs, arrangements or plans may be used by or disclosed to any person, firm, or corporation without the written permission of Panda Express Inc.

REVISIONS:	
Δ	MD STATE HEALTH PR 01 02/24/2023

ISSUE DATE:	
LL REVIEW	12-23-22
PERMITS	12-28-22
BID/ CONSTRUCTION SET	08-11-23

DRAWN BY: AB

PANDA PROJECT #: S4-24-D6247
PANDA STORE #: D6247
ARCH PROJECT #: JCDT18-0152

I certify that these documents were prepared or approved by me, and that I am a duly licensed architect or engineer under the laws of the State of Maryland, license number _____, expiration date _____.

NORR
ARCHITECTS ENGINEERS PLANNING

PANDA EXPRESS

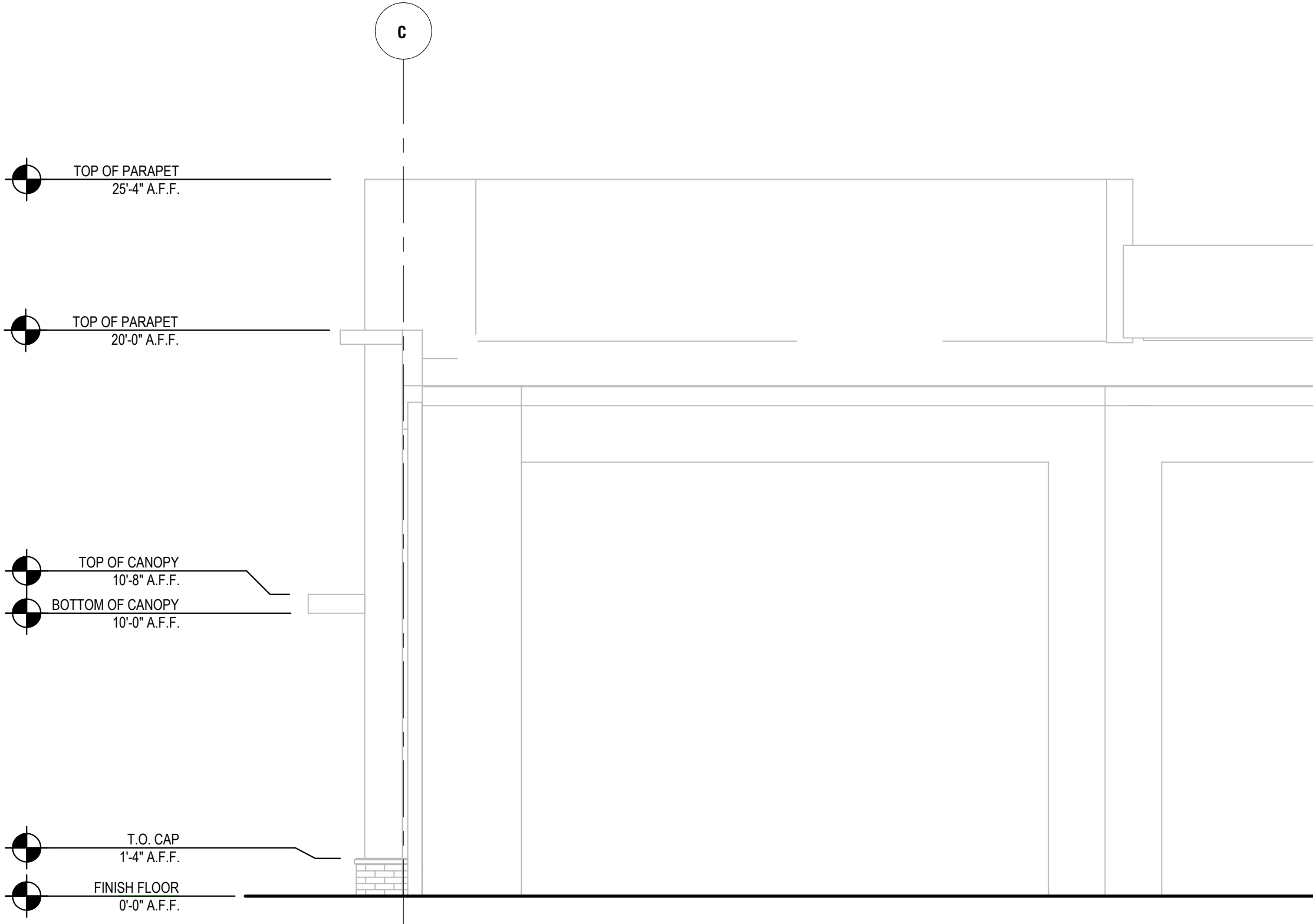
PANDA HOME 2600
14 CRANBROOK ROAD
Cockeysville, MD 21030

A-200

EXTERIOR
ELEVATIONS

PANDA HOME 2600 R3

BID/ CONSTRUCTION SET 08-11-2023

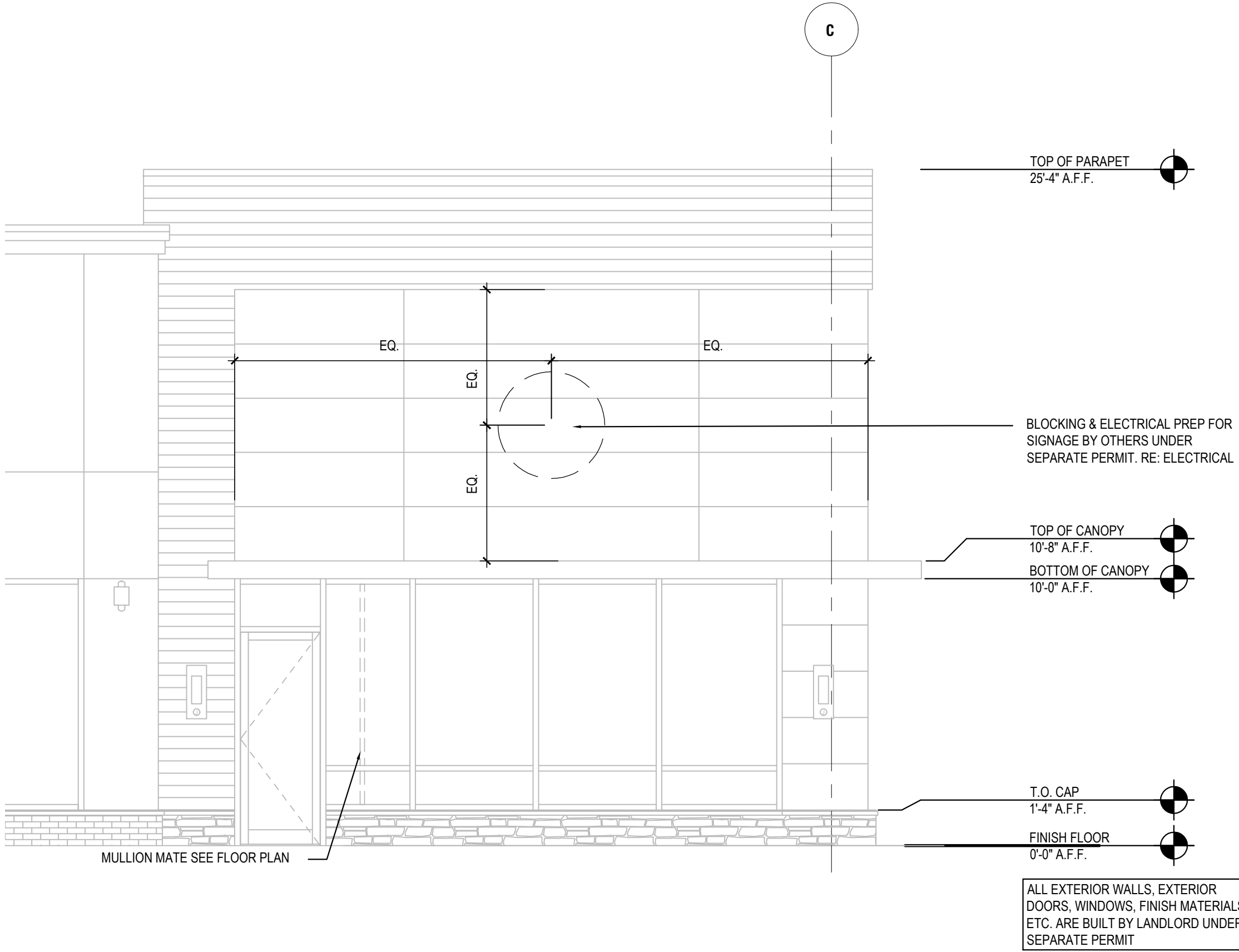


NORTH ELEVATION - REAR

3

Scale= 1/4" = 1'-0"

A-200

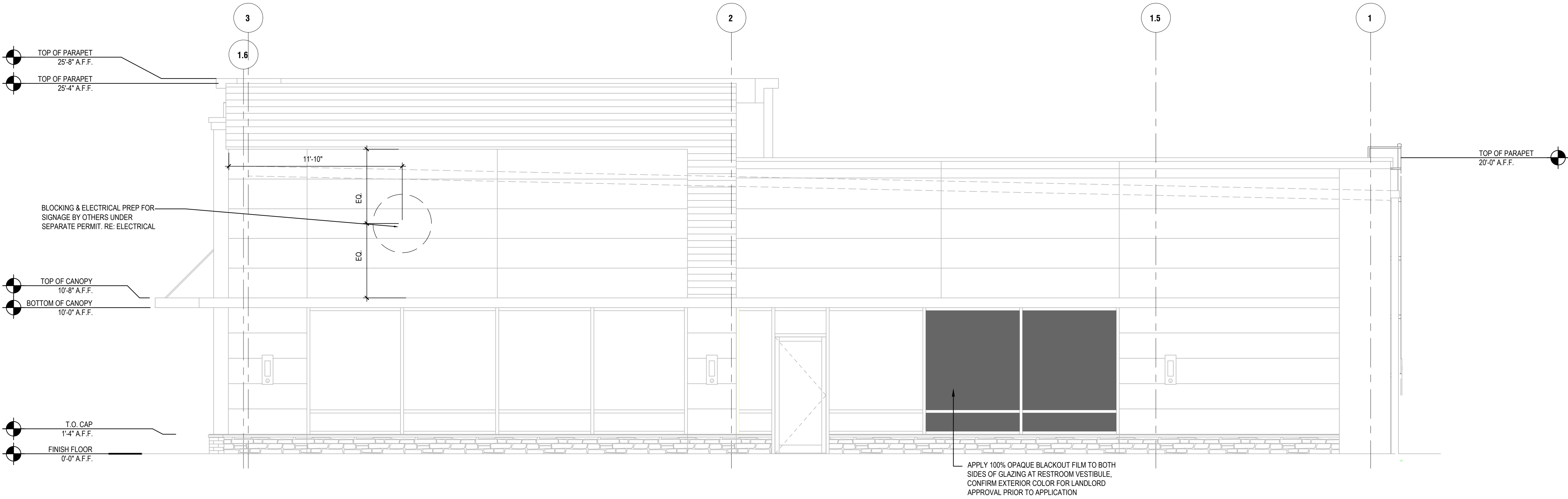


SOUTH ELEVATION - FRONT

2

Scale= 1/4" = 1'-0"

A-200



EAST ELEVATION - SIDE

1

Scale= 1/4" = 1'-0"

A-200