

CORNER RECORD

Agency Index

BK 110 PG 9

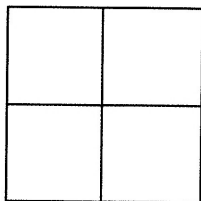
Document Number

CR 11315

City of EDEN TOWNSHIP

County of ALAMEDA, California

Brief Legal Description BRASS DISC MONUMENT LOCATED WITHIN LAKEMONT PL



CORNER TYPE

Government Corner ☐ Control ☒
Meander ☐ Property ☐
Rancho ☐ Other ☐

Date of Survey 4/9/18

COORDINATES (Optional)

N. 2077476± E. 6115296±

Elevation

Units Metric ☐ U.S. Survey Foot ☐

Horizontal Datum

Zone Epoch Date

Vertical Datum

☐ Complies with Public Resources Code §§8801-8819☐ Complies with Public Resources Code §§8890-8902PLS Act Ref: ☐ 8765(d) ☒ 8771 ☐ 8773 ☐ Other:

Corner/
Monument: ☒ Left as found ☐ Established ☐ Rebuilt ☒ Pre-Construction
☐ Found and tagged ☐ Reestablished ☐ Referenced ☐ Post-Construction

Narrative of corner identified and monument as found, set, reset, replaced, or removed:

☐ See sheet #2 for description(s) :

FOUND BRASS DISC MONUMENT WITH PUNCH IN CONCRETE IN MONUMENT WELL STAMPED LS 5077.

FOUND AND SET POINTS AS SHOWN ON PAGE 2.

THIS POINT WAS REFERENCED PRIOR TO A CONSTRUCTION PROJECT IN THE VICINITY.

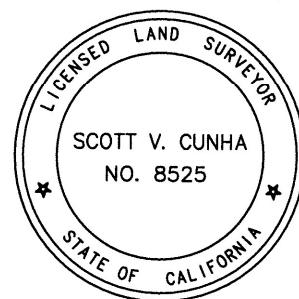
THE TIES SHOWN HEREON ARE FOR THE PURPOSE OF PERPETUATING FOUND MONUMENTATION.

NO CLAIM IS MADE AS TO THE RELATIONSHIP OF THE POINTS OR LINES SHOWN HEREON TO TRUE BOUNDARY LOCATION.

SURVEYOR'S STATEMENT

This Corner Record was prepared by me or under my direction in conformance with

the Professional Land Surveyors' Act on APRIL 16, 2018.

Signed Scott V. Cunha P.L.S. or R.C.E. No. LS 8525
SCOTT V. CUNHA

COUNTY SURVEYOR'S STATEMENT

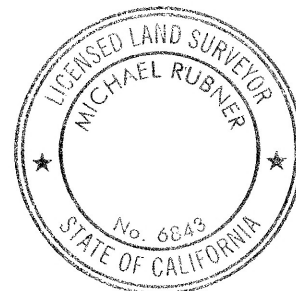
This Corner Record was received 20 APRIL 2018

and examined and filed 20 JULY 2018.

Signed Michael Rubner P.L.S. or R.C.E. No. 6843

Title COUNTY SURVEYOR

County Surveyor's Comment

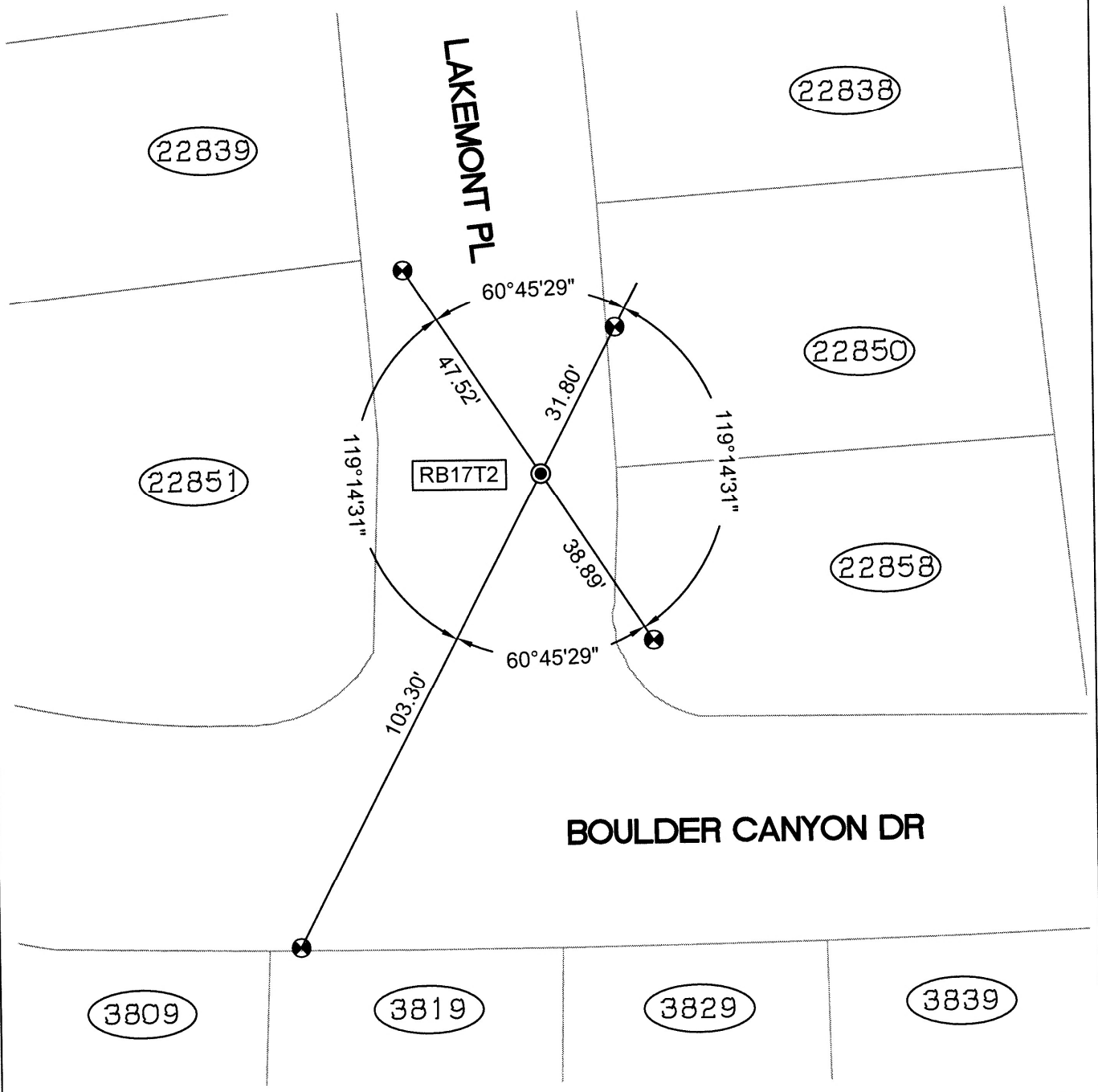


SPEC-2353-Pre

LEGEND

- FOUND BRASS DISC WITH PUNCH IN CONCRETE IN MONUMENT WELL
STAMPED LS 5077
- ⊗ SET CUT CROSS IN WALK
- ✕ SET CUT CROSS IN CURB
- ✕ SET MAG AND SHINER
- SET REBAR & CAP STAMPED "CEI RP"
- AA### ALAMEDA COUNTY MONUMENT ID
- (19592) REFERENCE STREET ADDRESS

SCALE: 1"=30'



218049-Lakemont-CR-07